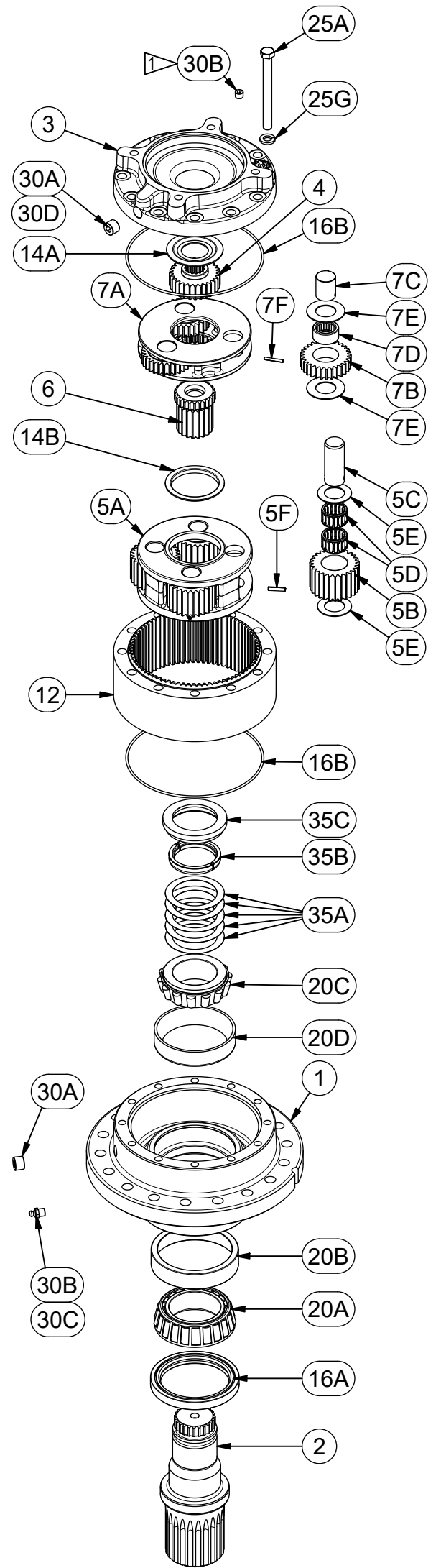




MODEL 70L DOUBLE PLANETARY  
EFFECTIVE FROM: SN-150499 08-12-2016

PARTS LIST								
CODE	DESCRIPTION	ITEM	QTY	RATIO CODE 14 (14.44:1)	RATIO CODE 19 (18.95:1)	RATIO CODE 21 (20.61:1)	RATIO CODE 26 (25.53:1)	RATIO CODE 29 (29.37:1)
BASE								
A	BASE - ROUND FLANGE	1	1	50-004-3379	50-004-3379	50-004-3379	50-004-3379	50-004-3379
AQ	BASE - ROUND ECCENTRIC - (70AQ)	1	1	50-004-3381	50-004-3381	50-004-3381	50-004-3381	50-004-3381
E	BASE - RECTANGULAR FLANGE	1	1	50-004-3380	50-004-3380	50-004-3380	50-004-3380	50-004-3380
F	BASE - FLANGELESS	1	1	50-004-3382	50-004-3382	50-004-3382	50-004-3382	50-004-3382
R	BASE - REVERSE MOUNT	1	1	50-004-3396	50-004-3396	50-004-3396	50-004-3396	50-004-3396
SHAFT								
D1	SHAFT - 23T 8/16 DP SPLINE	2	1	50-004-4682	50-004-4682	50-004-4682	50-004-4682	50-004-4682
D2	SHAFT - Ø3" 5/8" KEY	2	1	50-004-4683	50-004-4683	50-004-4683	50-004-4683	50-004-4683
D3	SHAFT - Ø2.25" 1/2" KEY	2	1	50-004-4686	50-004-4686	50-004-4686	50-004-4686	50-004-4686
H2	SHAFT - 2" HEX Ø.81 HOLE	2	1	50-004-4684	50-004-4684	50-004-4684	50-004-4684	50-004-4684
H3	SHAFT - 2.5" HEX Ø.81 HOLE	2	1	50-004-4706	50-004-4706	50-004-4706	50-004-4706	50-004-4706
S1	SPINDLE - Ø4.50" PILOT, Ø6.00" BC	2	1	50-004-4685	50-004-4685	50-004-4685	50-004-4685	50-004-4685
C1	CUSTOM SHAFT	2	1					
COVER								
A	COVER - SAE 'A' 2 & MOD 4-BOLT	3	1	50-004-1173	50-004-1173	50-004-1173	50-004-1173	50-004-1173
B	COVER - SAE 'B' 2-BOLT	3	1	50-004-1183	50-004-1183	50-004-1183	50-004-1183	50-004-1183
C	COVER - SAE 'C' 4-BOLT	3	1	50-004-1233	50-004-1233	50-004-1233	50-004-1233	50-004-1233
F	COVER - SAE 'A' 4-BOLT DANFOSS	3	1	50-004-1687	50-004-1687	50-004-1687	50-004-1687	50-004-1687
K	COVER - SAE 'C' 2-BOLT	3	1	50-004-1333	50-004-1333	50-004-1333	50-004-1333	50-004-1333
INPUT GEAR								
2	INPUT GEAR 13T 16/32 DP SPLINE	4	1	85-004-1671	85-004-1671	85-004-1102	85-004-1062	85-004-1696
3	INPUT GEAR 1"-6B SPLINE	4	1	85-004-1672	85-004-1672	85-004-1122	85-004-1112	-
4	INPUT GEAR 14T 12/24 DP SPLINE	4	1	85-004-1652	85-004-1652	85-004-1533	-	-
5	INPUT GEAR-15T 16/32 DP SPLINE	4	1	85-004-1673	85-004-1673	85-004-1542	85-004-1422	-
6	INPUT GEAR - Ø1.00", 1/4" KEY	4	1	PNNYA	PNNYA	PNNYA	-	-
7	INPUT GEAR - 17T 12/24 DP SPLINE	4	1	PNNYA	PNNYA	PNNYA	-	-
SECONDARY CARRIER ASSY								
	CARRIER - SECONDARY	5A	1	50-004-1646	50-004-1640	50-004-1640	50-004-1640	50-004-1640
	PLANET GEAR - SEC.	5B	4	85-004-1677	85-004-1670	85-004-1670	85-004-1670	85-004-1670
	PLANET SHAFT	5C	4	25-004-1031	25-004-1031	25-004-1031	25-004-1031	25-004-1031
	BEARING	5D	8	01-105-0590	01-105-0590	01-105-0590	01-105-0590	01-105-0590
	THRUST WASHER - PLANETS	5E	8	50-004-1644	50-004-1644	50-004-1644	50-004-1644	50-004-1644
	ROLL PIN (Ø3/16 X 7/8)	5F	4	01-153-0210	01-153-0210	01-153-0210	01-153-0210	01-153-0210
	SUN GEAR - 70	6	1	85-004-1668	85-004-1669	85-004-1669	85-004-1669	85-004-1669
	CARRIER ASSY	7	1	50-005-2151	50-005-2151	50-005-2011	50-005-2021	50-005-2195
	CARRIER - PRI	7A	1	50-004-1622	50-004-1622	50-004-1082	50-004-1072	50-004-1710
	PLANET GEAR - PRI.	7B	3	85-004-1611	85-004-1611	85-004-1031	85-004-1021	85-004-1700
	PLANET SHAFT	7C	3	85-004-1664	85-004-1664	81-004-0071	81-004-0071	81-004-0071
	PLANET BEARING	7D		01-106-0060 (QTY 57)	01-106-0060 (QTY 57)	01-105-0410 (QTY 3)	01-105-0410 (QTY 3)	01-105-0410 (QTY 3)
	THRUST WASHER-PLANET.	7E	6	85-004-1667	85-004-1667	81-004-1561	81-004-1561	81-004-1561
	ROLL PIN (1/8 X 1)	7F	3	01-153-0240	01-153-0240	01-153-0080	01-153-0080	01-153-0080
	RING GEAR	12	1	50-004-1023	50-004-1023	50-004-1023	50-004-1023	50-004-1023
THRUST WASHERS								
	THRUST WASHER-INPUT	14A	1	50-004-1091	50-004-1091	50-004-1091	50-004-1091	50-004-1091
	THRUST WASHER SEC. CUP	14B	1	50-004-1011	50-004-1011	50-004-1011	50-004-1011	50-004-1011
	SEAL KIT		(1)	70-016-2001	70-016-2001	70-016-2001	70-016-2001	70-016-2001
	SEAL	16A	1	01-405-0841	01-405-0841	01-405-0841	01-405-0841	01-405-0841
	O-RING (167MM X 3MM)	16B	2	01-402-0560	01-402-0560	01-402-0560	01-402-0560	01-402-0560
OUTPUT SHAFT BEARINGS								
	BRG CONE	20A	1	01-102-0030	01-102-0030	01-102-0030	01-102-0030	01-102-0030
	BRG CUP	20B	1	01-103-0030	01-103-0030	01-103-0030	01-103-0030	01-103-0030
	BEARING CONE	20C	1	01-102-0370	01-102-0370	01-102-0370	01-102-0370	01-102-0370
	BEARING CUP	20D	1	01-103-0370	01-103-0370	01-103-0370	01-103-0370	01-103-0370
HARDWARE								
	HEX HEAD CAP SCREW	25A	12	01-150-1550	01-150-1550	01-150-1550	01-150-1550	01-150-1550
	LOCKWASHER- 7/16"	25G	12	01-166-0340	01-166-0340	01-166-0340	01-166-0340	01-166-0340
PLUGS AND FITTINGS								
	PIPE PLUG (3/8 MAGNETIC)	30A	2	01-207-0070	01-207-0070	01-207-0070	01-207-0070	01-207-0070
	PIPE PLUG 1/8 NPT HOLLOW HEX	30B	1	01-207-0030	01-207-0030	01-207-0030	01-207-0030	01-207-0030
Z	GREASE FITTING (OPTIONAL)	30C	1	01-215-0010	01-215-0010	01-215-0010	01-215-0010	01-215-0010
V	AIR VENT (OPTIONAL)	30D	1	01-216-0070	01-216-0070	01-216-0070	01-216-0070	01-216-0070
MISCELLANEOUS								
	SHIM	35A	*	50-004-1521	50-004-1521	50-004-1521	50-004-1521	50-004-1521
	SPLIT RING	35B	1	50-004-1452	50-004-1452	50-004-1452	50-004-1452	50-004-1452
	LOCK RING	35C	1	50-004-1462	50-004-1462	50-004-1462	50-004-1462	50-004-1462



**NOTES:** ▷

1. USED ONLY WITH 'C' AND 'K' COVERS.

\*QUANTITY DEPENDANT UPON DESIRED BEARING PRELOAD  
X70LD2 ECN: 5152 REV: C 02/05/2024 JH