

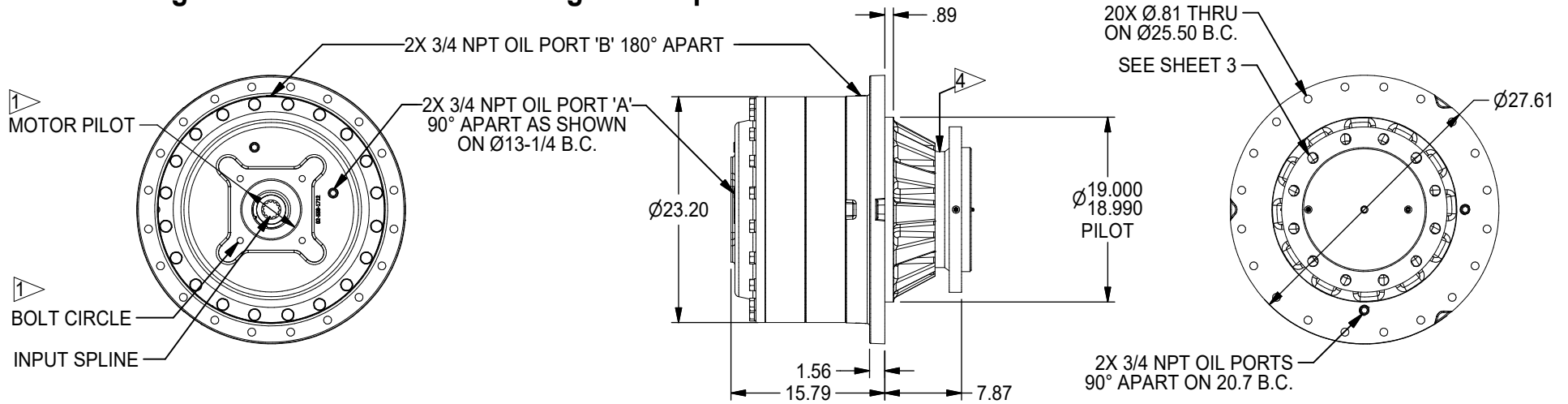


600 GEAR DRIVE - SPINDLE OUTPUT

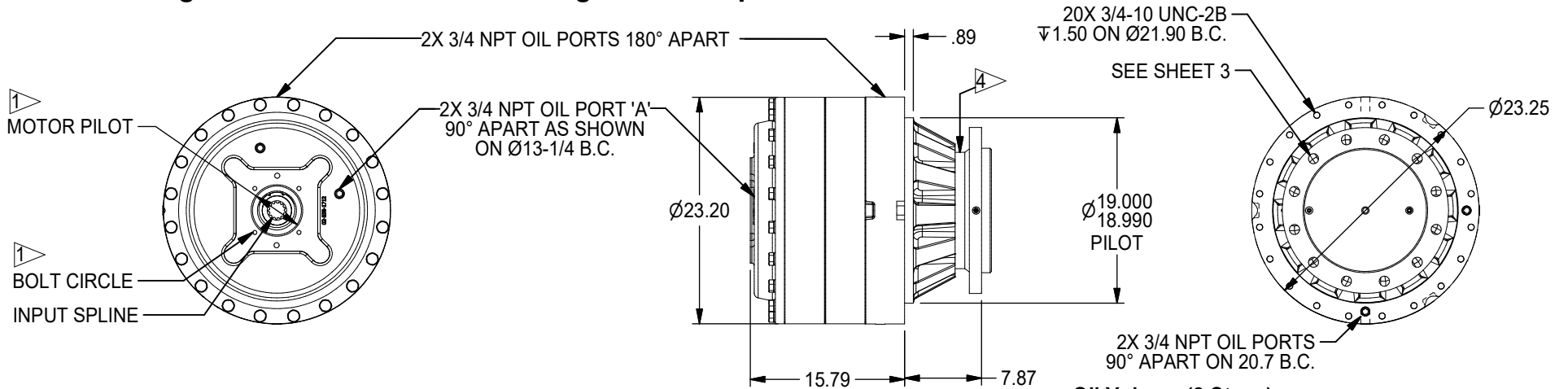
600,000 in-lb (67,791 N-m) Intermittent Rating 300,000 in-lb (33,895 N-m) Continuous Rating
 Typical Applications: Industrial, Marine or Mobile Equipment

(913) 782-1238 (Tel)
 (913) 782-4206 (Fax)
Sales@Eskridgeinc.com
www.Eskridgeinc.com
 FORM: PS600LS-AG
 SHEET 1 OF 5

600 2-Stage General Dimensions Flanged 'A' Option



600 2-Stage General Dimensions Flangeless 'F' Option



NOTES: ▷

1. SPECIFICATIONS CALLED OUT IN MOTOR MOUNT DIMENSIONS SECTION.
2. VALUES ARE SHOWN IN INCHES.
3. OUTPUT SHAFT ROTATION SAME DIRECTION AS INPUT ROTATION.
4. METAL FACE SEAL WITH RUBBER BOOT.

Oil Volume (2 Stage)

LUBRICATION	ORIENTATION	HORIZONTAL:	VERTICAL: PINION DOWN	VERTICAL: PINION UP
QUANTITY		5.00 Gal	9.50 Gal	9.50 Gal
OIL FILL LEVEL (GRADE GL-5 EP 80/90)		FILL TO: PORT 'A'	FILL TO: 1.5" FROM COVER PORT 'A'	FILL TO: PORT 'B'

All Units Shipped Without Oil



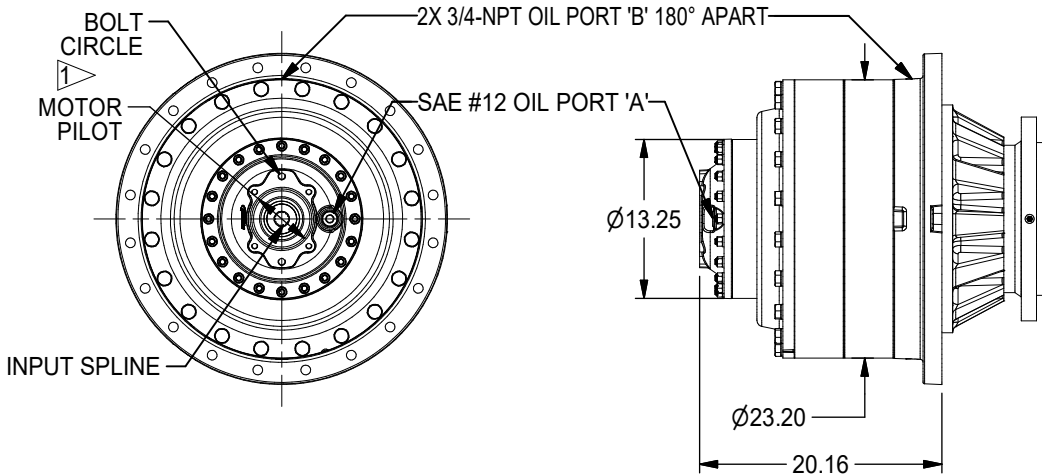
600 GEAR DRIVE - SPINDLE OUTPUT

600,000 in-lb (67,791 N-m) Intermittent Rating 300,000 in-lb (33,895 N-m) Continuous Rating
 Typical Applications: Industrial, Marine or Mobile Equipment

(913) 782-1238 (Tel)
 (913) 782-4206 (Fax)
Sales@Eskridgeinc.com
www.Eskridgeinc.com
 FORM: PS600LS-AG

SHEET 2 OF 5

600 3-Stage with 254 Primary (Base dimensions identical to 2-Stage Option)



Available Ratios:

106	106.33:1
138	138.29:1
155	155.34:1
166	166.27:1
211	211.34:1
216	216.25:1
243	242.90:1
260	260.00:1
304	303.57:1
330	330.48:1
338	338.15:1
380	379.83:1
395	394.82:1
443	443.48:1
475	474.70:1
501	501.30:1

Input Mounting:

- SAE "A" (2 & Modified 4 Bolt)
- SAE "B" (2 & 4 Bolt)
- SAE "C" (2 & 4 Bolt)
- SAE "D" (4 Bolt)

Input Spline:

- 4 (14T 12/24 DP Spline)
- 9 (13T 8/16 DP Spline)

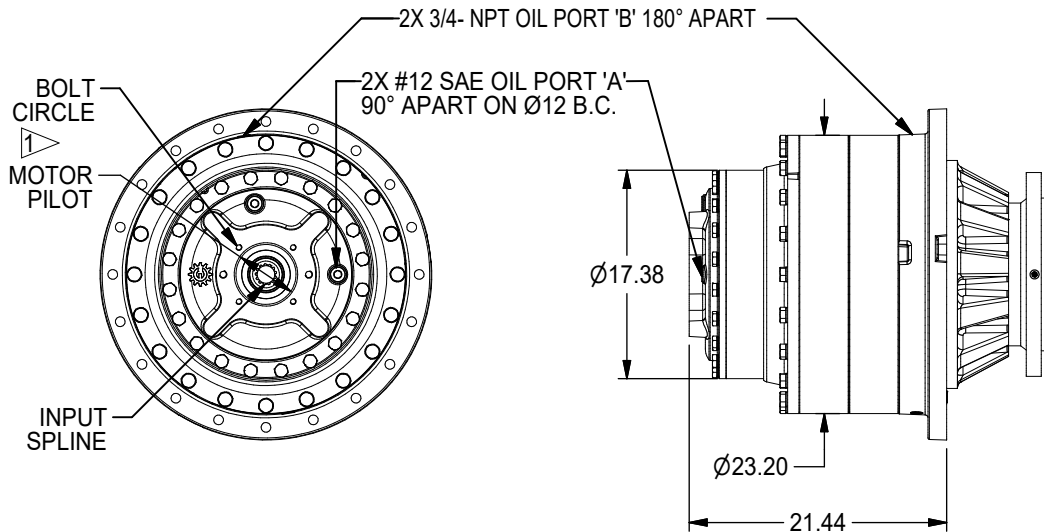
Oil Volume (3 Stage with 254 Primary)

LUBRICATION	ORIENTATION	HORIZONTAL:	VERTICAL: PINION DOWN	VERTICAL: PINION UP
QUANTITY		5.9 Gal	11.3 Gal	11.3 Gal
OIL FILL LEVEL (GRADE GL-5 EP 80/90)		FILL TO: PORT 'A'	FILL TO: 1.5" FROM COVER PORT 'A'	FILL TO: PORT 'B'

All Units Shipped Without Oil

(Other Ratios Available)
 Consult Eskridge
 Representative

600 3-Stage with 440 Primary



Available Ratios:

97	97.33:1
145	144.72:1
152	152.19:1
187	187.10:1
226	226.31:1
238	237.99:1
278	277.87:1
293	292.57:1
354	353.88:1
413	413.18:1
458	457.50:1

Input Mounting:

- SAE "C" (2 & 4 Bolt)
- SAE "D" (4 Bolt)
- SAE "E" (4 Bolt)

Input Spline:

- 4 (14T 12/24 DP Spline)
- 5 (15T 8/16 DP Spline)
- 8 (16T 8/16 DP Spline)
- 9 (13T 8/16 DP Spline)

Oil Volume (3 Stage with 440 Primary)

LUBRICATION	ORIENTATION	HORIZONTAL:	VERTICAL: PINION DOWN	VERTICAL: PINION UP
QUANTITY		5.9 Gal	11.3 Gal	11.3 Gal
OIL FILL LEVEL (GRADE GL-5 EP 80/90)		FILL TO: PORT 'A'	FILL TO: 1.5" FROM COVER PORT 'A'	FILL TO: PORT 'B'

All Units Shipped Without Oil

(Other Ratios Available)
 Consult Eskridge
 Representative

NOTES: ▷

- SPECIFICATIONS CALLED OUT IN MOTOR MOUNT DIMENSIONS SECTION.
- 16T NOT AVAILABLE ON 187:1, 293:1 AND 458:1 RATIOS.



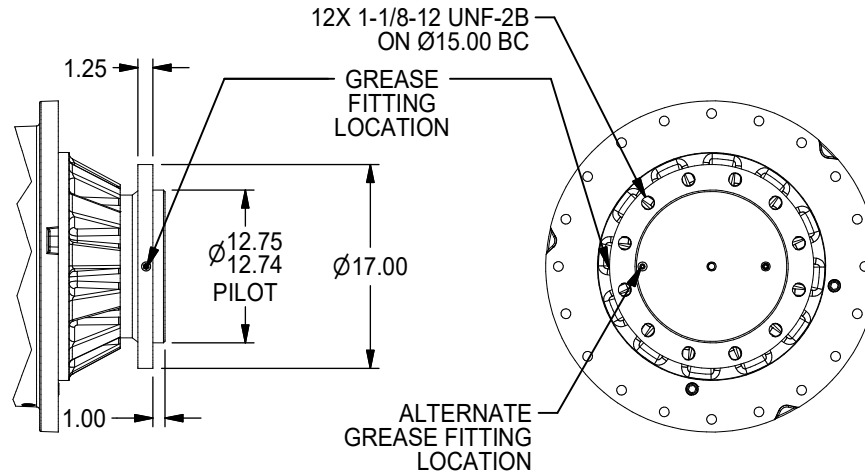
600 GEAR DRIVE - SPINDLE OUTPUT

600,000 in-lb (67,791 N-m) Intermittent Rating 300,000 in-lb (33,895 N-m) Continuous Rating
Typical Applications: Industrial, Marine or Mobile Equipment

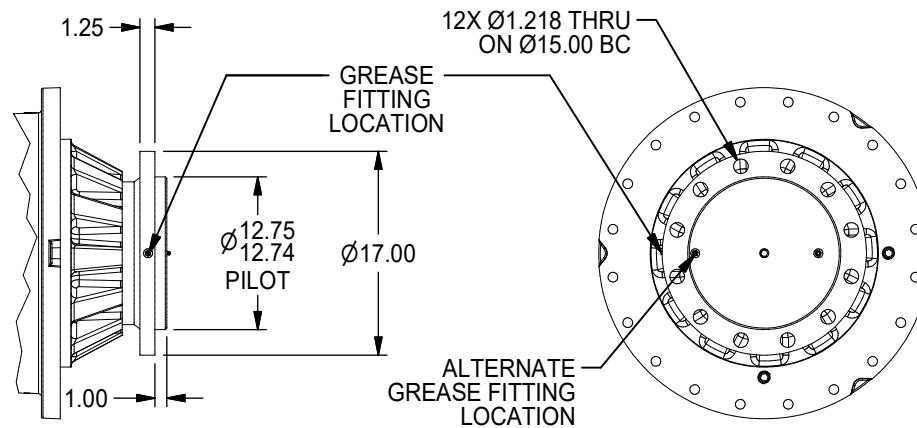
(913) 782-1238 (Tel)
(913) 782-4206 (Fax)
Sales@Eskridgeinc.com
www.Eskridgeinc.com
FORM: PS600LS-AG
SHEET 3 OF 5

Output Shaft Options *Values are shown as inches.*

S1 - 12X 1-1/8-12 UNF MOUNT HOLES



S2 - 12X $\varnothing 1.281$ MOUNT HOLES





600 GEAR DRIVE - SPINDLE OUTPUT

600,000 in-lb (67,791 N-m) Intermittent Rating 300,000 in-lb (33,895 N-m) Continuous Rating
 Typical Applications: Industrial, Marine or Mobile Equipment

(913) 782-1238 (Tel)
 (913) 782-4206 (Fax)
Sales@Eskridgeinc.com
www.Eskridgeinc.com
 FORM: PS600LS-AG

SHEET 4 OF 5

Performance Ratings

Maximum Intermittent Output Torque: 600,000 in-lb (67,791 N-m)
 Continuous Output Torque: 300,000 in-lb (33,895 N-m)
 Maximum Input Speed: 4,000 RPM
 Maximum Operating Ambient Temperature: 110° F (43° C)
 Minimum Operating Ambient Temperature: -20° F (-28° C)

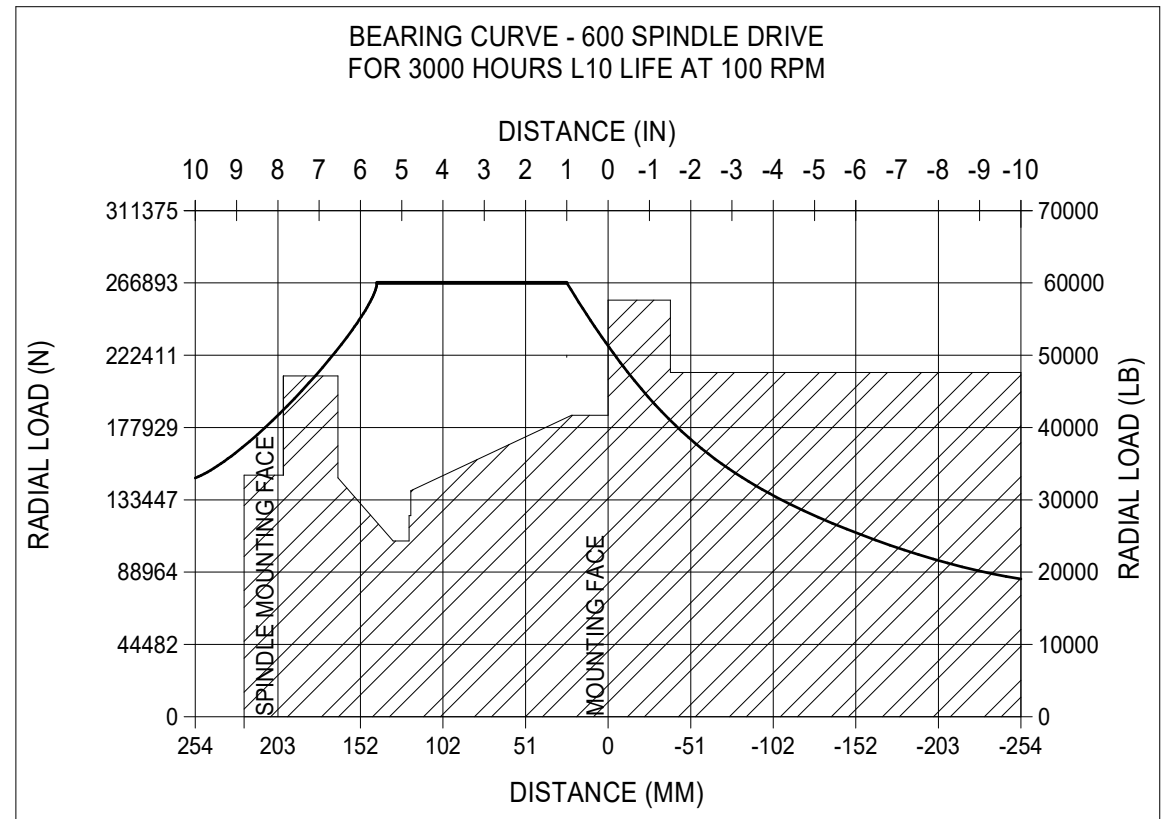
Consult your Eskridge representative to determine ratings for your specific application or configuration

Motor Mount Dimensions

PILOT DIMENSIONS	BOLT CIRCLE
SAE 'A' Ø3.250/3.254	2 & 4X 1/2-13 UNC-2B ∇5/8 ON Ø4.188 B.C.
SAE 'B' Ø4.001/4.005	2X 1/2-13 UNC-2B ∇.50 ON Ø5.75 B.C.
SAE 'C' Ø5.001/5.004	4X 1/2-13 UNC-2B ∇1 ON Ø6.375 B.C. 2X 5/8-11 UNC-2B ∇1 ON Ø7.125 B.C.
SAE 'D' Ø6.000/6.004	4X 3/4-10 UNC-2B ∇1 ON Ø9.000 B.C.
SAE 'E' Ø6.501/6.505	4X 3/4-10 UNC-2B ∇1 ON Ø12.500 B.C.

Approximate Unit Weight

Single Stage: 1,200 lb (544 kg)
 Two Stage: 1,425 lb (648 kg)
 Three Stage: 1,700 lb (771 kg)



To adjust for loads and speeds other than those shown on above curve, use this formula:

$$\text{Adjusted Life (hours)} = 3000 \left(\frac{100 \text{ rpm}}{\text{Speed (Adjusted)}} \right) \times \left(\frac{\text{Load (Curve)}}{\text{Load (Adjusted)}} \right)^{10/3}$$



600 GEAR DRIVE - SPINDLE OUTPUT

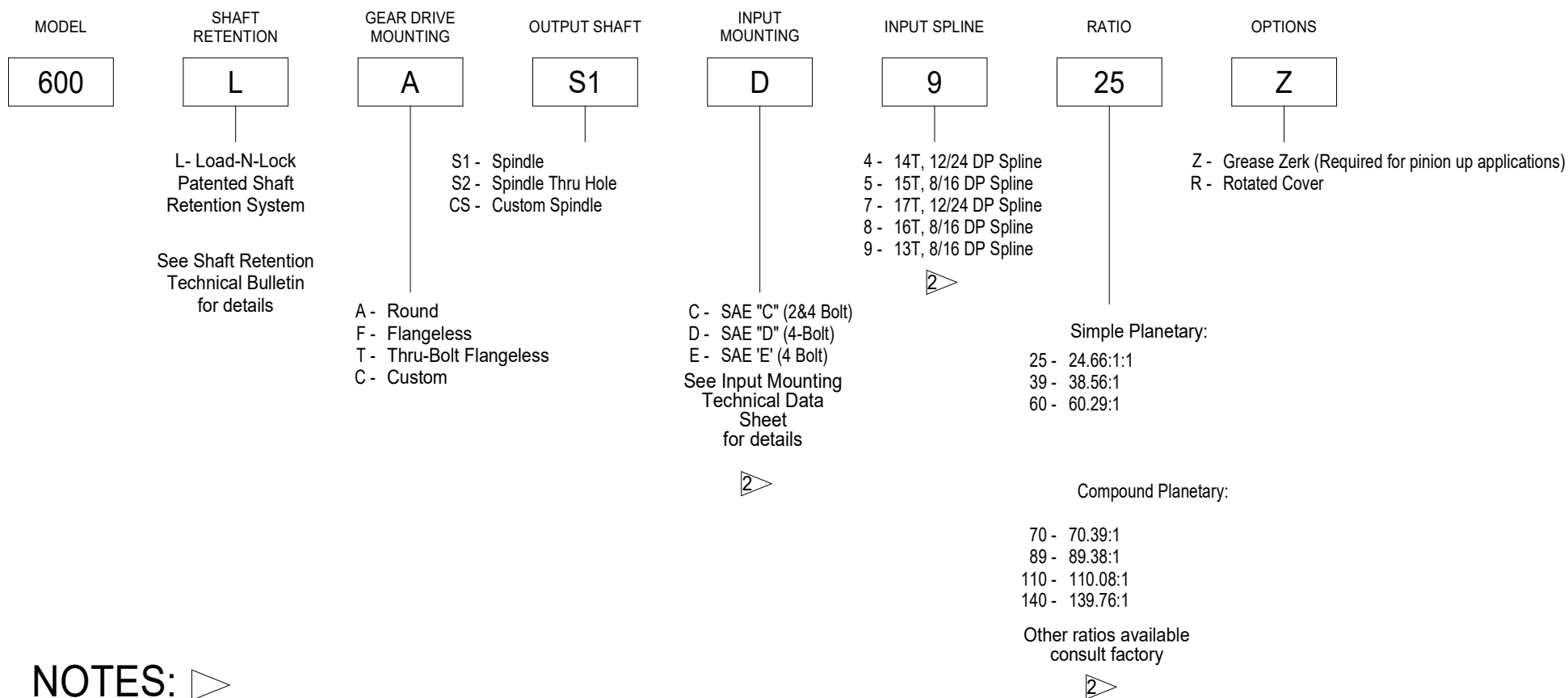
600,000 in-lb (67,791 N-m) Intermittent Rating 300,000 in-lb (33,895 N-m) Continuous Rating
Typical Applications: Industrial, Marine or Mobile Equipment

(913) 782-1238 (Tel)
(913) 782-4206 (Fax)
Sales@Eskridgeinc.com
www.Eskridgeinc.com
FORM: PS600LS-AG

SHEET 5 OF 5

Ordering Information

Example Part Number: 600LAS1D9-25-Z



NOTES: ▷

1. TWO STAGE RATIO GEARBOX SHOWN IN EXAMPLE.
2. THREE STAGE INPUT MOUNTING, INPUT SPLINE AND RATIOS ARE SHOWN ON PAGE 2.