

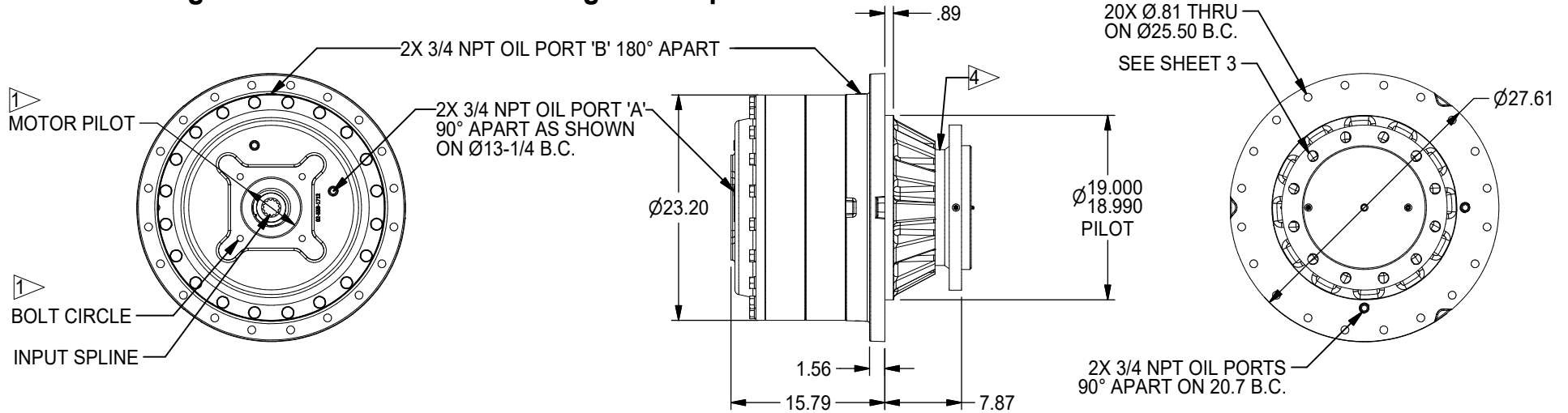


1400 GEAR DRIVE - SPINDLE OUTPUT

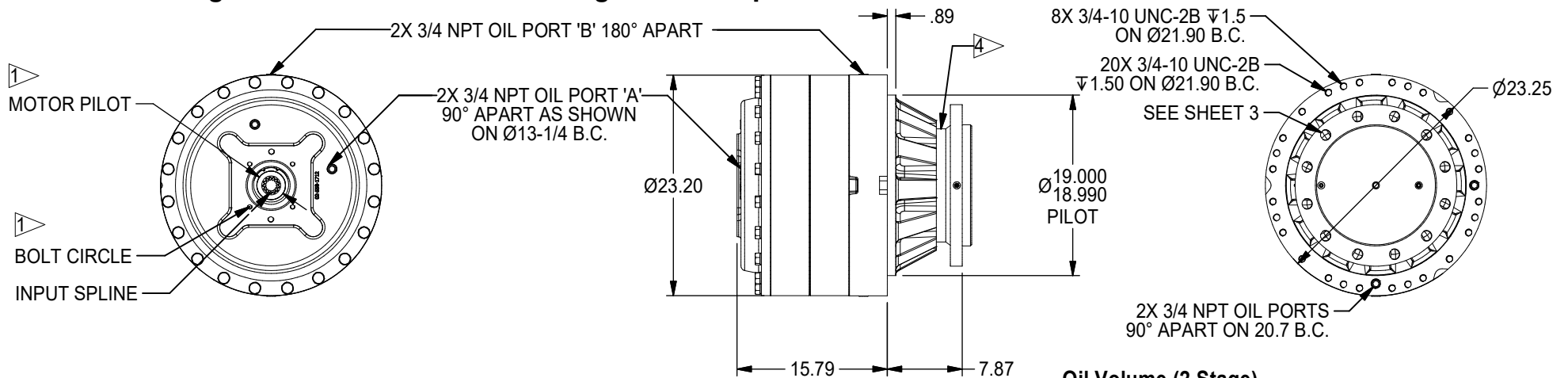
1,400,000 in-lb (158,179 N-m) Intermittent Rating 700,000 in-lb (79089 N-m) Continuous Rating
 Typical Applications: Industrial, Marine or Mobile Equipment

(913) 782-1238 (Tel)
 (913) 782-4206 (Fax)
 Sales@Eskridgeinc.com
 www.Eskridgeinc.com
 FORM: PS1400LS-AD
 SHEET 1 OF 5

1400 2-Stage General Dimensions Flanged 'A' Option



1400 2-Stage General Dimensions Flangeless 'F' Option



NOTES: ▷

1. SPECIFICATIONS CALLED OUT IN MOTOR MOUNT DIMENSIONS SECTION.
2. VALUES ARE SHOWN IN INCHES.
3. OUTPUT SHAFT ROTATION SAME DIRECTION AS INPUT ROTATION.
4. METAL FACE SEAL WITH RUBBER BOOT.

Oil Volume (2 Stage)

ORIENTATION	HORIZONTAL:	VERTICAL: PINION DOWN	VERTICAL: PINION UP
LUBRICATION QUANTITY	4.5 Gal	7.5 Gal	7.5 Gal
OIL FILL LEVEL (GRADE GL-5 EP 80/90)	FILL TO: PORT 'A'	FILL TO: 1.5" FROM COVER PORT 'A'	FILL TO: PORT 'B'

All Units Shipped Without Oil



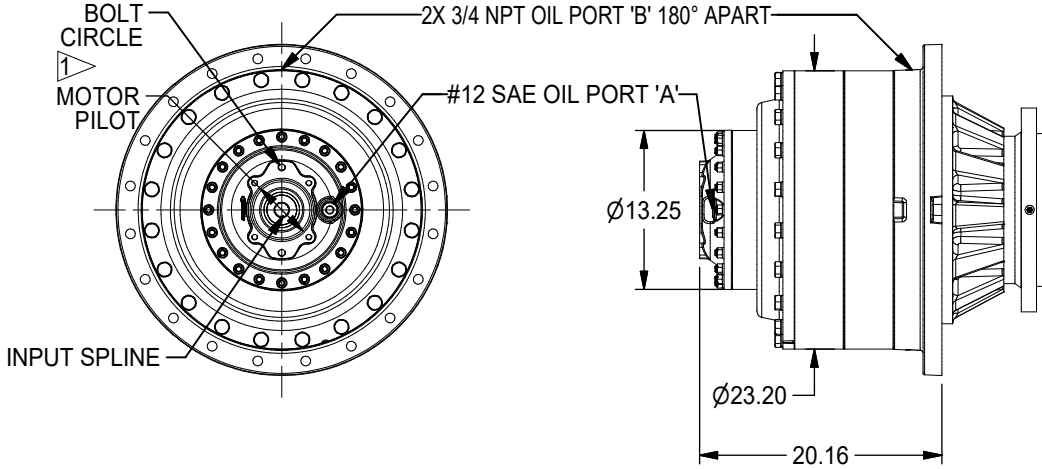
1400 GEAR DRIVE - SPINDLE OUTPUT

1,400,000 in-lb (158,179 N-m) Intermittent Rating 700,000 in-lb (79089 N-m) Continuous Rating
 Typical Applications: Industrial, Marine or Mobile Equipment

(913) 782-1238 (Tel)
 (913) 782-4206 (Fax)
Sales@Eskridgeinc.com
www.Eskridgeinc.com
 FORM: PS1400LS-AD

SHEET 2 OF 5

1400 3-Stage with 254 Primary (Base dimensions identical to 2-Stage Option)



Available Ratios:

114 114.21:1
 149 148.53:1
 167 166.84:1
 179 178.59:1
 227 227.00:1
 232 232.27:1
 261 260.89:1
 355 354.96:1

(Other Ratios Available)
 Consult Eskridge
 Representative

Input Mounting:

SAE "A" (2 & Modified 4 Bolt)
 SAE "B" (2 & 4 Bolt)
 SAE "C" (2 & 4 Bolt)
 SAE "D" (4 Bolt)

Input Spline:

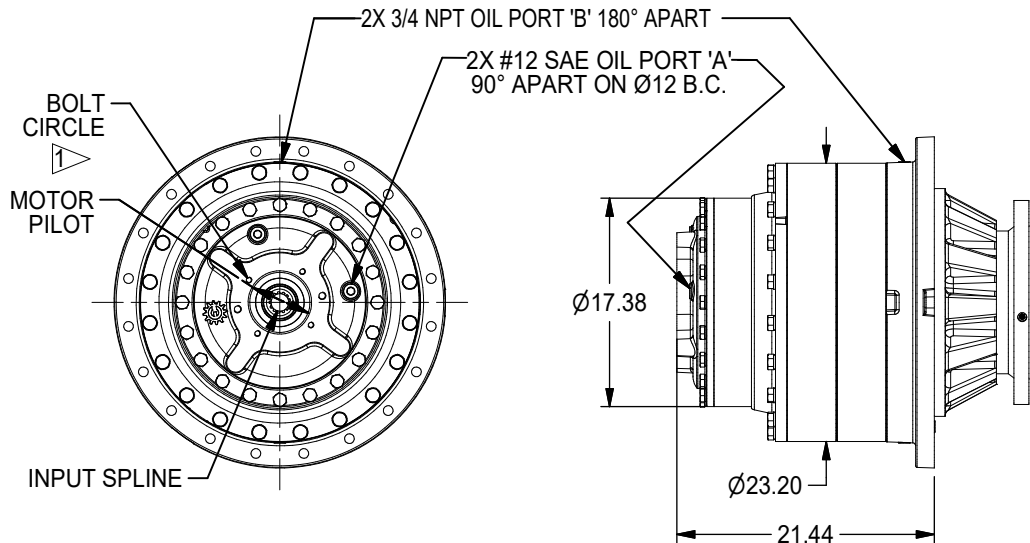
4 (14T 12/24 DP Spline)
 9 (13T 8/16 DP Spline)

Oil Volume (3 Stage with 254 Primary)

LUBRICATION	ORIENTATION	HORIZONTAL:	VERTICAL: PINION DOWN	VERTICAL: PINION UP
QUANTITY		5.9 Gal	9.7 Gal	9.7 Gal
OIL FILL LEVEL (GRADE GL-5 EP 80/90)		FILL TO: PORT 'A'	FILL TO: 1.5" FROM COVER PORT 'A'	FILL TO: PORT 'B'

All Units Shipped Without Oil

1400 3-Stage with 440 Primary



Available Ratios:

104 104.54:1
 155 155.44:1
 163 163.47:1
 201 200.96:1
 243 243.07:1
 314 314.24:1

(Other Ratios Available)
 Consult Eskridge
 Representative

Input Mounting:

SAE "C" (2 & 4 Bolt)
 SAE "D" (4 Bolt)
 SAE "E" (4 Bolt)

Input Spline:

4 (14T 12/24 DP Spline)
 5 (15T 8/16 DP Spline)
 2 8 (16T 8/16 DP Spline)
 9 (13T 8/16 DP Spline)

Oil Volume (3 Stage with 440 Primary)

LUBRICATION	ORIENTATION	HORIZONTAL:	VERTICAL: PINION DOWN	VERTICAL: PINION UP
QUANTITY		5.8 Gal	10.2 Gal	10.2 Gal
OIL FILL LEVEL (GRADE GL-5 EP 80/90)		FILL TO: PORT 'A'	FILL TO: 1.5" FROM COVER PORT 'A'	FILL TO: PORT 'B'

All Units Shipped Without Oil

NOTES: ▷

- SPECIFICATIONS CALLED OUT IN MOTOR MOUNT DIMENSIONS SECTION.
- 16T NOT AVAILABLE ON 201:1, AND 314:1 RATIOS.



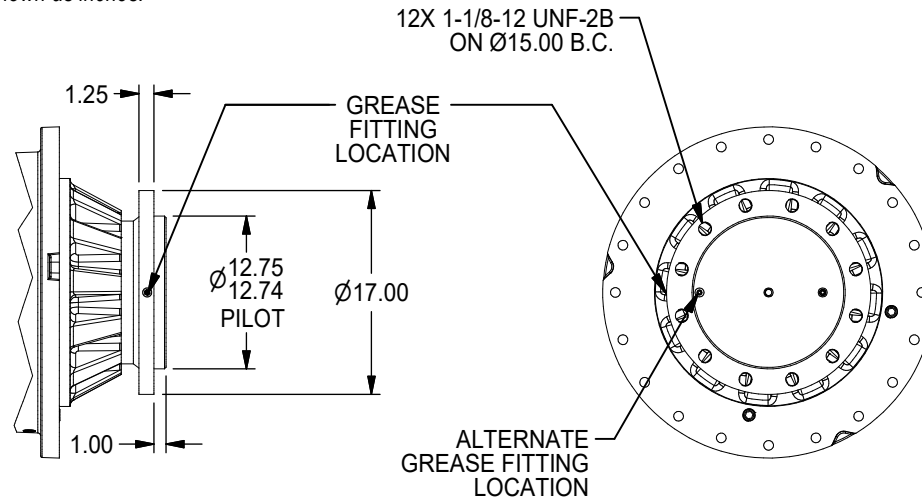
1400 GEAR DRIVE - SPINDLE OUTPUT

1,400,000 in-lb (158,179 N-m) Intermittent Rating 700,000 in-lb (79089 N-m) Continuous Rating
Typical Applications: Industrial, Marine or Mobile Equipment

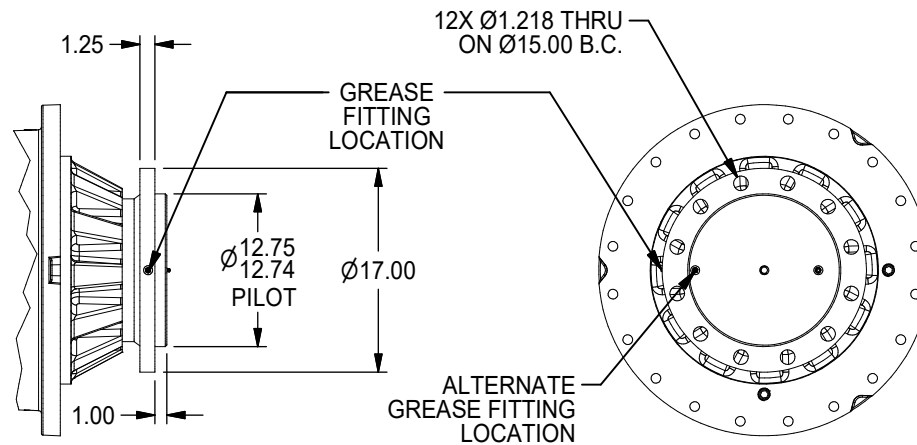
(913) 782-1238 (Tel)
(913) 782-4206 (Fax)
Sales@Eskridgeinc.com
www.Eskridgeinc.com
FORM: PS1400LS-AD
SHEET 3 OF 5

Output Shaft Options *Values are shown as inches.*

S1 - 12X 1-1/8-12 UNF MOUNT HOLES



S2 - 12X Ø1.281 MOUNT HOLES





1400 GEAR DRIVE - SPINDLE OUTPUT

1,400,000 in-lb (158,179 N-m) Intermittent Rating 700,000 in-lb (79,089 N-m) Continuous Rating
 Typical Applications: Industrial, Marine or Mobile Equipment

(913) 782-1238 (Tel)
 (913) 782-4206 (Fax)
Sales@Eskridgeinc.com
www.Eskridgeinc.com
 FORM: PS1400LS-AD

SHEET 4 OF 5

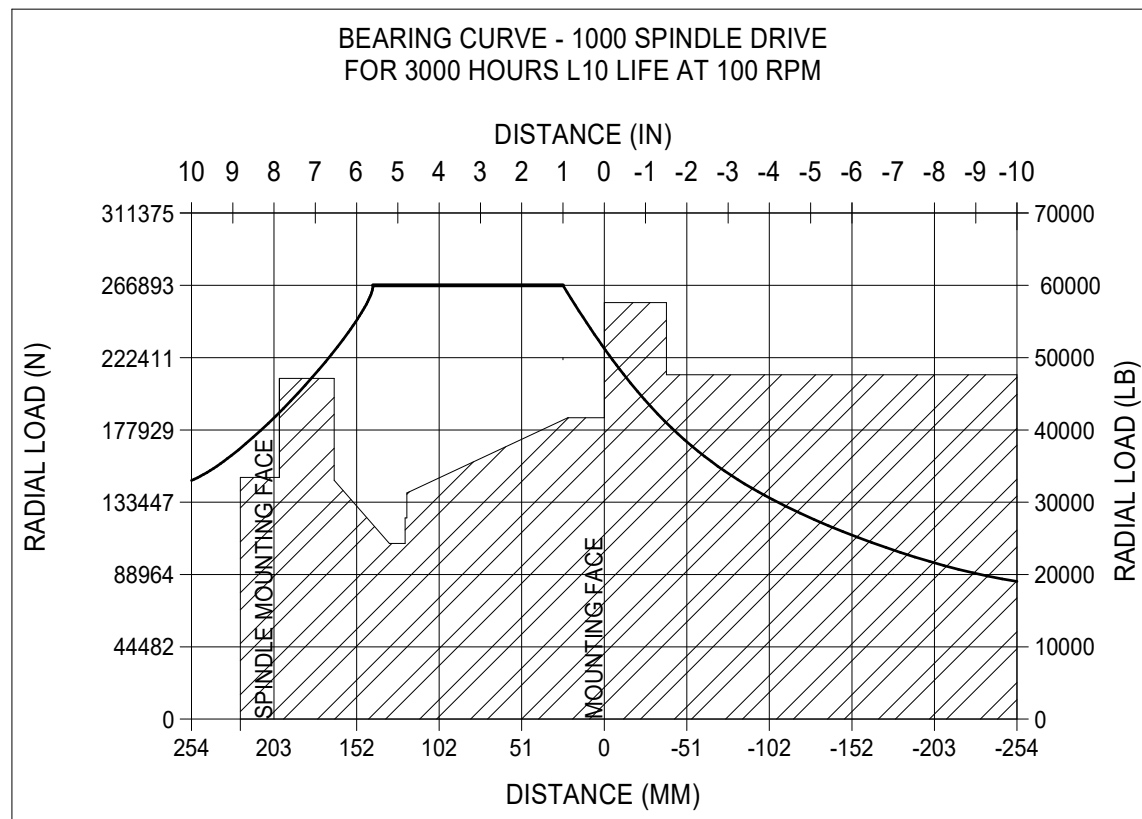
Performance Ratings

Maximum Intermittent Output Torque: 1,400,000 in-lb (158,985 N-m)
 Continuous Output Torque: 700,000 in-lb (79,089 N-m)
 Maximum Input Speed: 4,000 RPM
 Maximum Operating Ambient Temperature: 110° F (43° C)
 Minimum Operating Ambient Temperature: -20° F (-28° C)

Consult your Eskridge representative to determine ratings for your specific application or configuration

Motor Mount Dimensions

PILOT DIMENSIONS	BOLT CIRCLE
SAE 'A' Ø3.250/3.254	2 & 4X 1/2-13 UNC-2B ∇5/8 ON Ø4.188 B.C.
SAE 'B' Ø4.001/4.005	2X 1/2-13 UNC-2B ∇.50 ON Ø5.75 B.C.
SAE 'C' Ø5.001/5.004	4X 1/2-13 UNC-2B ∇1 ON Ø6.375 B.C. 2X 5/8-11 UNC-2B ∇1 ON Ø7.125 B.C.
SAE 'D' Ø6.000/6.004	4X 3/4-10 UNC-2B ∇1 ON Ø9.000 B.C.
SAE 'E' Ø6.501/6.505	4X 3/4-10 UNC-2B ∇1 ON Ø12.500 B.C.



Approximate Unit Weight

Single Stage: 1,200 lb (544 kg)
 Two Stage: 1,425 lb (648 kg)
 Three Stage: 1,700 lb (771 kg)

To adjust for loads and speeds other than those shown on above curve, use this formula:

$$\text{Adjusted Life (hours)} = 3000 \left(\frac{100 \text{ rpm}}{\text{Speed (Adjusted)}} \right) \times \left(\frac{\text{Load (Curve)}}{\text{Load (Adjusted)}} \right)^{10/3}$$



1400 GEAR DRIVE - SPINDLE OUTPUT

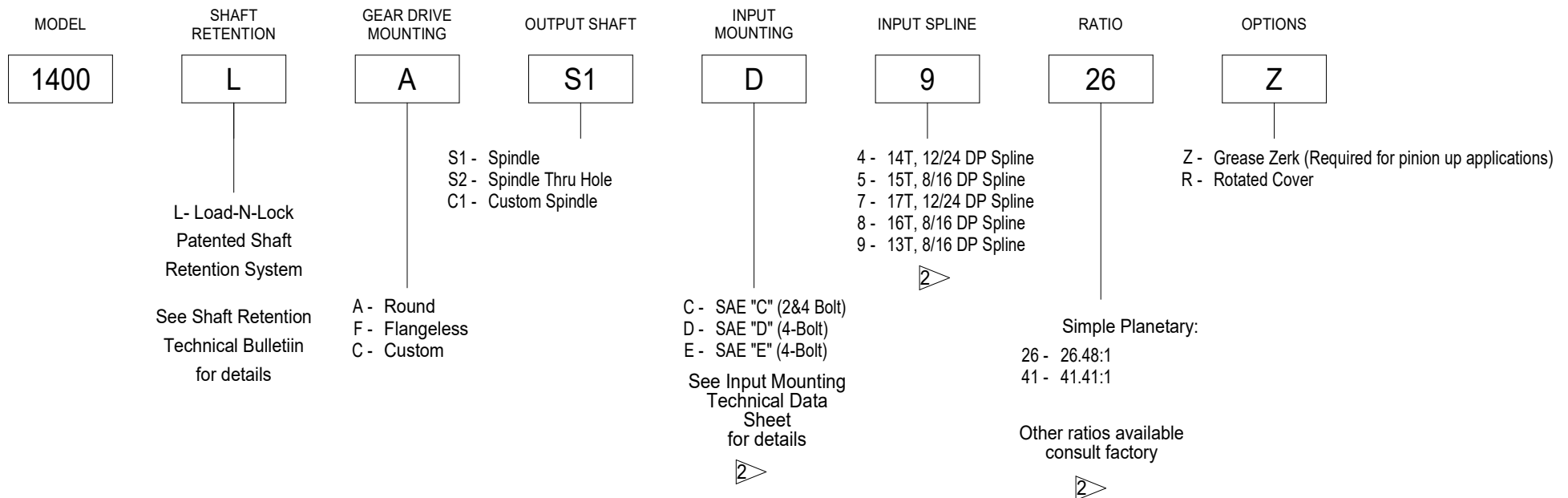
1,400,000 in-lb (158,179 N-m) Intermittent Rating 700,000 in-lb (79089 N-m) Continuous Rating
Typical Applications: Industrial, Marine or Mobile Equipment

(913) 782-1238 (Tel)
(913) 782-4206 (Fax)
Sales@Eskridgeinc.com
www.Eskridgeinc.com
FORM: PS1400LS-AD

SHEET 5 OF 5

Ordering Information

Example Part Number: 1400LAS1D9-76-Z



NOTES: ▷

1. TWO STAGE RATIO GEARBOX SHOWN IN EXAMPLE.
2. THREE STAGE INPUT MOUNTING, INPUT SPLINE AND RATIOS ARE SHOWN ON PAGE 2.