

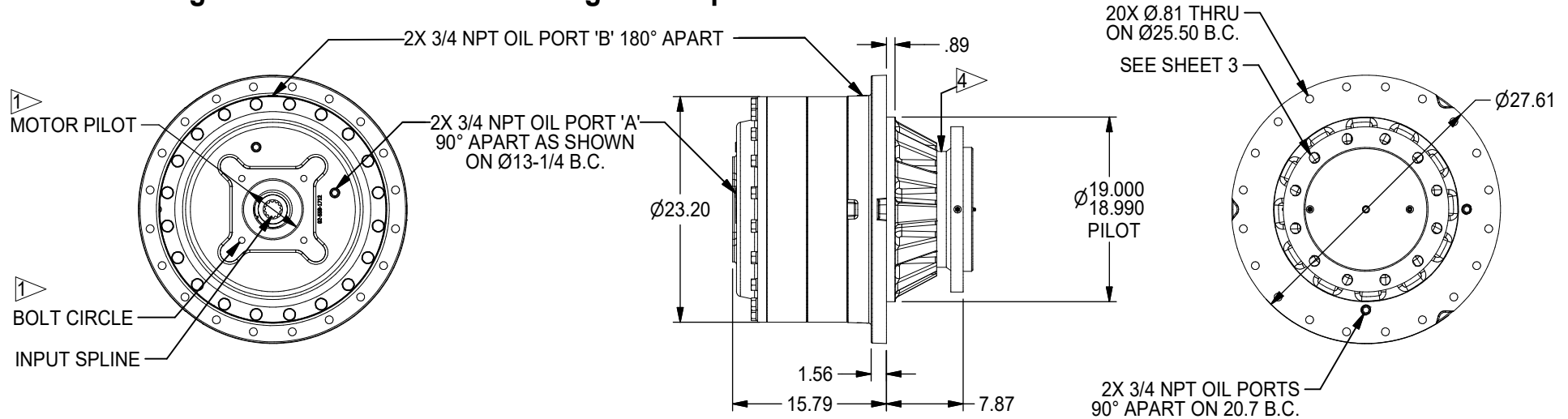


# 1000 GEAR DRIVE - SPINDLE OUTPUT

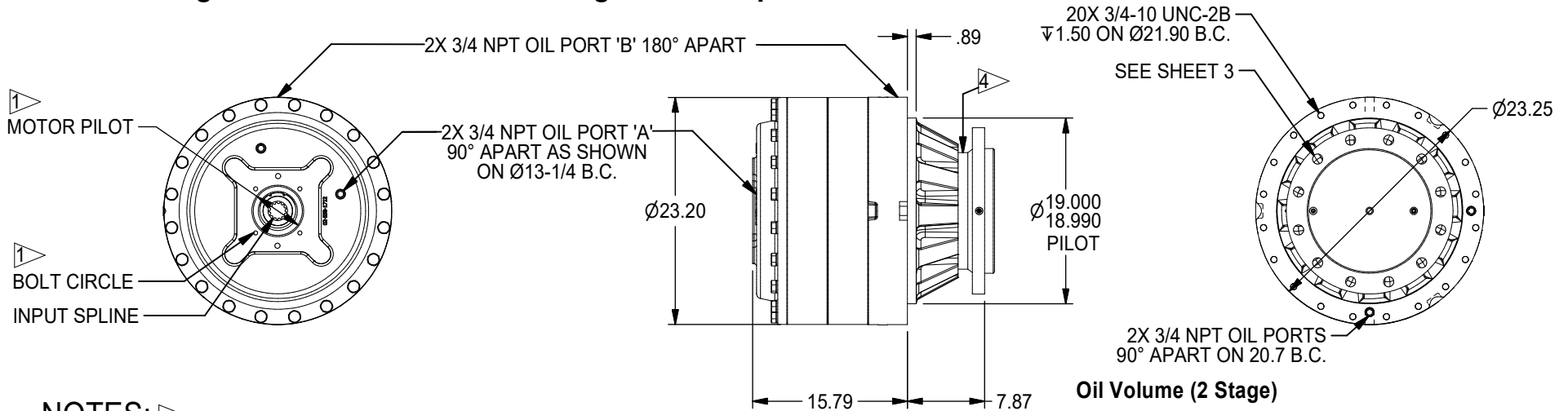
1,000,000 in-lb (112,985 N-m) Intermittent Rating 500,000 in-lb (56,492 N-m) Continuous Rating  
 Typical Applications: Industrial, Marine or Mobile Equipment

(913) 782-1238 (Tel)  
 (913) 782-4206 (Fax)  
[Sales@Eskridgeinc.com](mailto:Sales@Eskridgeinc.com)  
[www.Eskridgeinc.com](http://www.Eskridgeinc.com)  
 FORM: PS1000LS-AG  
 SHEET 1 OF 5

## 1000 2-Stage General Dimensions Flanged 'A' Option



## 1000 2-Stage General Dimensions Flangeless 'F' Option



### NOTES: ▷

1. SPECIFICATIONS CALLED OUT IN MOTOR MOUNT DIMENSIONS SECTION.
2. VALUES ARE SHOWN IN INCHES.
3. OUTPUT SHAFT ROTATION SAME DIRECTION AS INPUT ROTATION.
4. METAL FACE SEAL WITH RUBBER BOOT.

### Oil Volume (2 Stage)

LUBRICATION	ORIENTATION		
	HORIZONTAL:	VERTICAL: PINION DOWN	VERTICAL: PINION UP
QUANTITY	5.00 Gal	9.50 Gal	9.50 Gal
OIL FILL LEVEL (GRADE GL-5 EP 80/90)	FILL TO: PORT 'A'	FILL TO: 1.5" FROM COVER PORT 'A'	FILL TO: PORT 'B'

All Units Shipped Without Oil



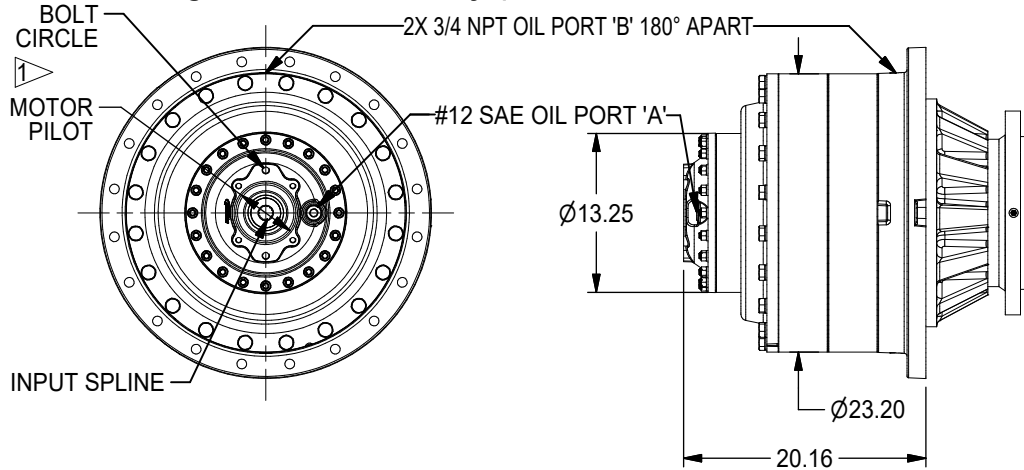
# 1000 GEAR DRIVE - SPINDLE OUTPUT

1,000,000 in-lb (112,985 N-m) Intermittent Rating 500,000 in-lb (56,492 N-m) Continuous Rating  
 Typical Applications: Industrial, Marine or Mobile Equipment

(913) 782-1238 (Tel)  
 (913) 782-4206 (Fax)  
[Sales@Eskridgeinc.com](mailto:Sales@Eskridgeinc.com)  
[www.Eskridgeinc.com](http://www.Eskridgeinc.com)  
 FORM: PS1000LS-AG

SHEET 2 OF 5

## 1000 3-Stage with 254 Primary (Base dimensions identical to 2-Stage Option)



Available Ratios:

114	114.21:1
149	148.53:1
167	166.84:1
179	178.59:1
227	227.00:1
232	232.27:1
261	260.89:1
326	326.06:1
355	354.96:1
424	424.06:1
476	476.33:1

Input Mounting:

- SAE "A" (2 & Modified 4 Bolt)
- SAE "B" (2 & 4 Bolt)
- SAE "C" (2 & 4 Bolt)
- SAE "D" (4 Bolt)

Input Spline:

- 4 (14T 12/24 DP Spline)
- 9 (13T 8/16 DP Spline)

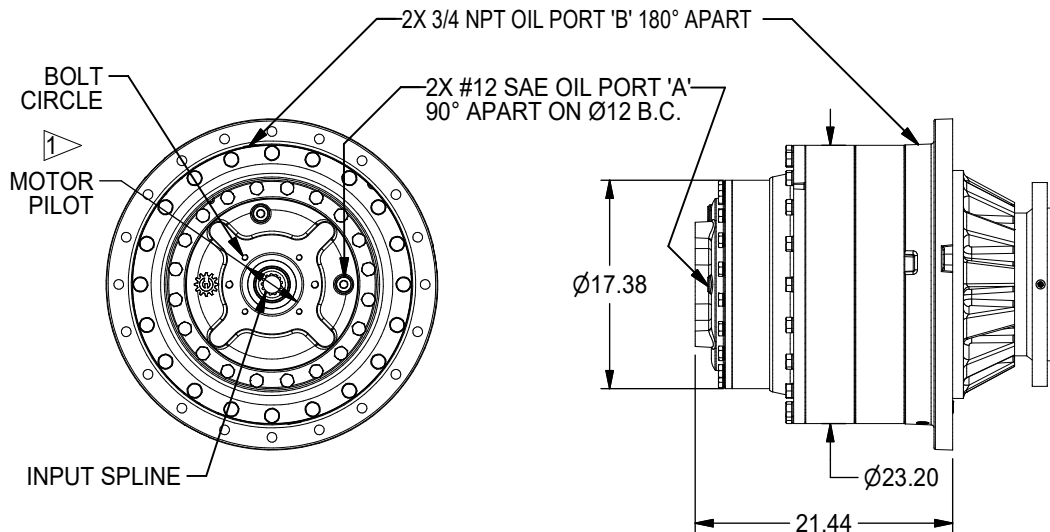
### Oil Volume (3 Stage with 254 Primary)

LUBRICATION	ORIENTATION	HORIZONTAL:	VERTICAL: PINION DOWN	VERTICAL: PINION UP
QUANTITY		5.9 Gal	11.3 Gal	11.3 Gal
OIL FILL LEVEL (GRADE GL-5 EP 80/90)		FILL TO: PORT 'A'	FILL TO: 1.5" FROM COVER PORT 'A'	FILL TO: PORT 'B'

All Units Shipped Without Oil

(Other Ratios Available)  
 Consult Eskridge  
 Representative

## 1000 3-Stage with 440 Primary



Available Ratios:

104	104.54:1
155	155.44:1
163	163.47:1
201	200.96:1
243	243.07:1
298	298.45:1
314	314.24:1
444	443.79:1

Input Mounting:

- SAE "C" (2 & 4 Bolt)
- SAE "D" (4 Bolt)
- SAE "E" (4 Bolt)

Input Spline:

- 4 (14T 12/24 DP Spline)
- 5 (15T 8/16 DP Spline)
- 8 (16T 8/16 DP Spline)
- 9 (13T 8/16 DP Spline)

### Oil Volume (3 Stage with 440 Primary)

LUBRICATION	ORIENTATION	HORIZONTAL:	VERTICAL: PINION DOWN	VERTICAL: PINION UP
QUANTITY		5.9 Gal	11.3 Gal	11.3 Gal
OIL FILL LEVEL (GRADE GL-5 EP 80/90)		FILL TO: PORT 'A'	FILL TO: 1.5" FROM COVER PORT 'A'	FILL TO: PORT 'B'

All Units Shipped Without Oil

(Other Ratios Available)  
 Consult Eskridge  
 Representative

### NOTES: ▷

1. SPECIFICATIONS CALLED OUT IN MOTOR MOUNT DIMENSIONS SECTION.
2. 16T NOT AVAILABLE ON 201, 314 RATIOS.



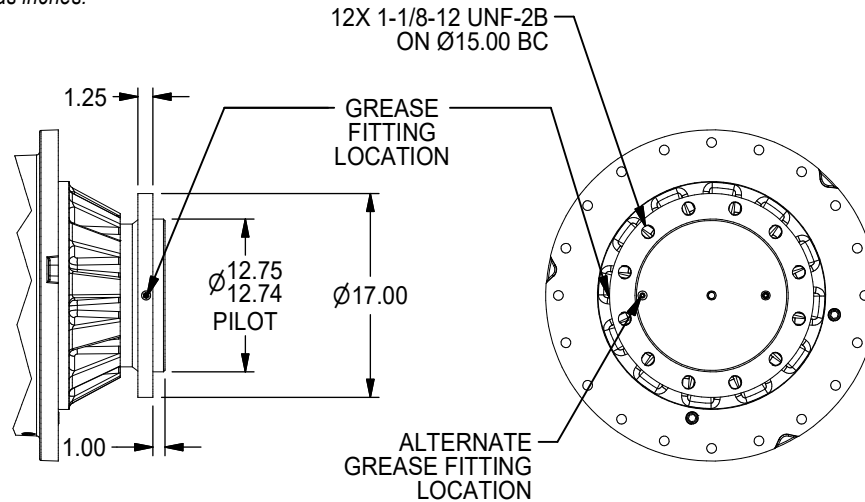
# 1000 GEAR DRIVE - SPINDLE OUTPUT

1,000,000 in-lb (112,985 N-m) Intermittent Rating 500,000 in-lb (56,492 N-m) Continuous Rating  
Typical Applications: Industrial, Marine or Mobile Equipment

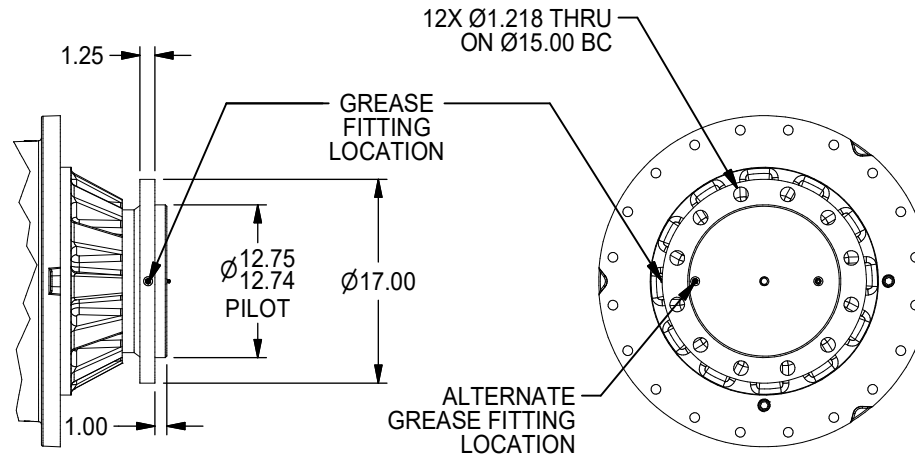
(913) 782-1238 (Tel)  
(913) 782-4206 (Fax)  
[Sales@Eskridgeinc.com](mailto:Sales@Eskridgeinc.com)  
[www.Eskridgeinc.com](http://www.Eskridgeinc.com)  
FORM: PS1000LS-AG  
SHEET 3 OF 5

## Output Shaft Options *Values are shown as inches.*

### S1 - 12X 1-1/8-12 UNF MOUNT HOLES



### S2 - 12X Ø1.281 MOUNT HOLES





# 1000 GEAR DRIVE - SPINDLE OUTPUT

1,000,000 in-lb (112,985 N-m) Intermittent Rating 500,000 in-lb (56,492 N-m) Continuous Rating  
 Typical Applications: Industrial, Marine or Mobile Equipment

(913) 782-1238 (Tel)  
 (913) 782-4206 (Fax)  
[Sales@Eskridgeinc.com](mailto:Sales@Eskridgeinc.com)  
[www.Eskridgeinc.com](http://www.Eskridgeinc.com)  
 FORM: PS1000LS-AG

SHEET 4 OF 5

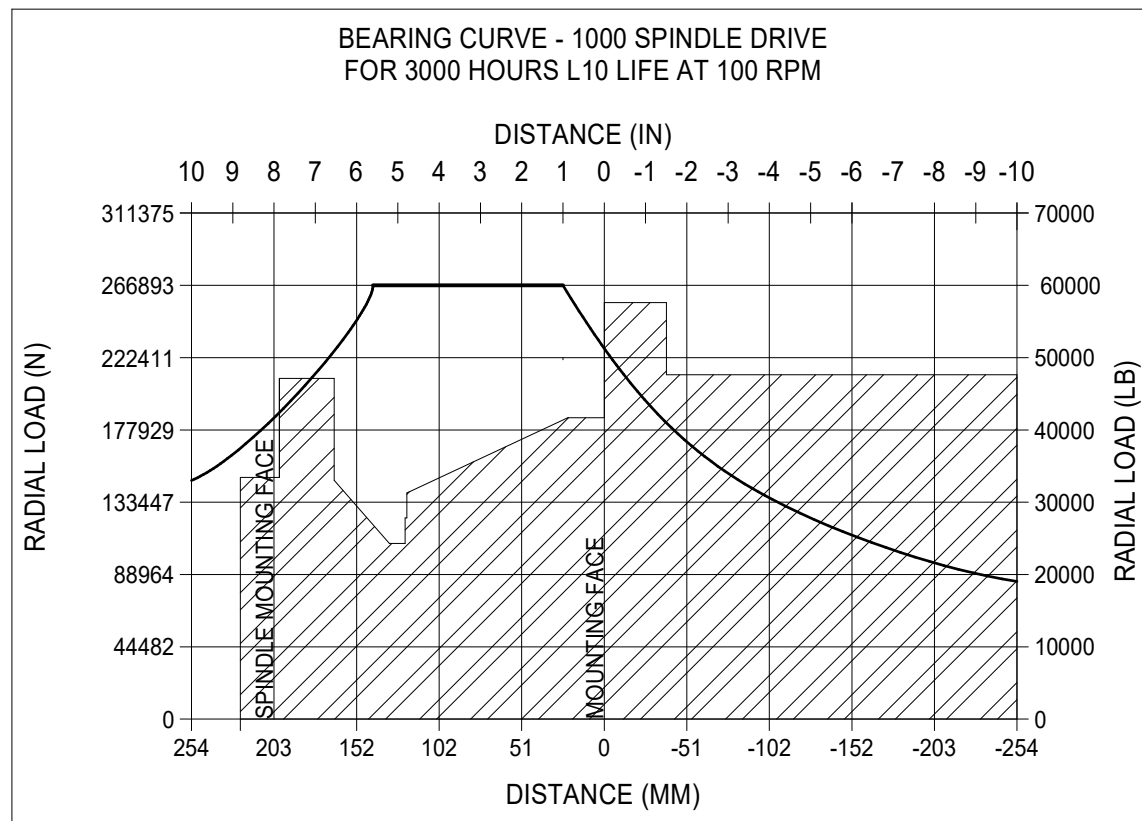
## Performance Ratings

Maximum Intermittent Output Torque: 1,000,000 in-lb (112,985 N-m)  
 Continuous Output Torque: 500,000 in-lb (56,492 N-m)  
 Maximum Input Speed: 4,000 RPM  
 Maximum Operating Ambient Temperature: 110° F (43° C)  
 Minimum Operating Ambient Temperature: -20° F (-28° C)

*Consult your Eskridge representative to determine ratings for your specific application or configuration*

## Motor Mount Dimensions

PILOT DIMENSIONS	BOLT CIRCLE
SAE 'A' Ø3.250/3.254	2 & 4X 1/2-13 UNC-2B ∇5/8 ON Ø4.188 B.C.
SAE 'B' Ø4.001/4.005	2X 1/2-13 UNC-2B ∇.50 ON Ø5.75 B.C.
SAE 'C' Ø5.001/5.004	4X 1/2-13 UNC-2B ∇1 ON Ø6.375 B.C. 2X 5/8-11 UNC-2B ∇1 ON Ø7.125 B.C.
SAE 'D' Ø6.000/6.004	4X 3/4-10 UNC-2B ∇1 ON Ø9.000 B.C.
SAE 'E' Ø6.501/6.505	4X 3/4-10 UNC-2B ∇1 ON Ø12.500 B.C.



To adjust for loads and speeds other than those shown on above curve, use this formula:

$$\text{Adjusted Life (hours)} = 3000 \left( \frac{100 \text{ rpm}}{\text{Speed (Adjusted)}} \right) \times \left( \frac{\text{Load (Curve)}}{\text{Load (Adjusted)}} \right)^{10/3}$$

## Approximate Unit Weight

Single Stage: 1,200 lb (544 kg)  
 Two Stage: 1,425 lb (648 kg)  
 Three Stage: 1,700 lb (771 kg)



# 1000 GEAR DRIVE - SPINDLE OUTPUT

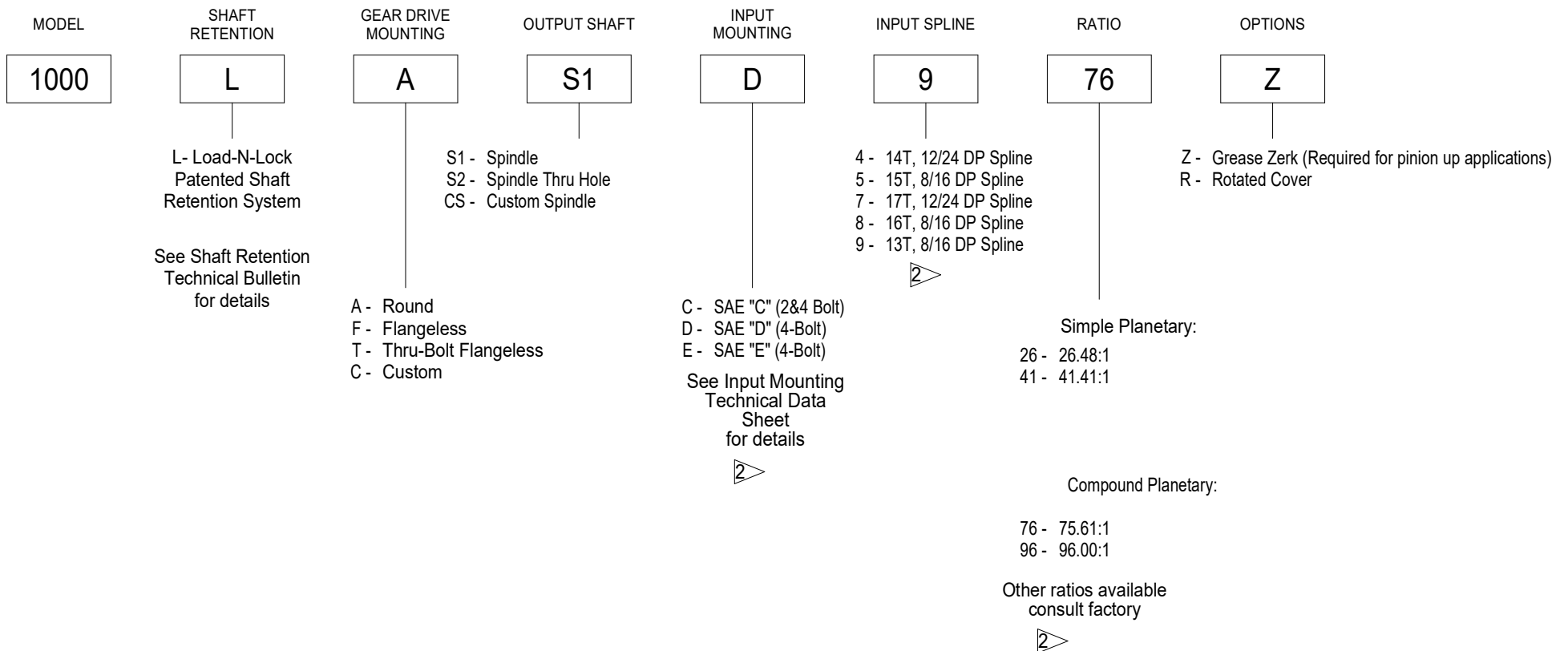
1,000,000 in-lb (112,985 N-m) Intermittent Rating 500,000 in-lb (56,492 N-m) Continuous Rating  
Typical Applications: Industrial, Marine or Mobile Equipment

(913) 782-1238 (Tel)  
(913) 782-4206 (Fax)  
[Sales@Eskridgeinc.com](mailto:Sales@Eskridgeinc.com)  
[www.Eskridgeinc.com](http://www.Eskridgeinc.com)  
FORM: PS1000LS-AG

SHEET 5 OF 5

## Ordering Information

Example Part Number: 1000LAS1D9-76-Z



## NOTES: ▷

1. TWO STAGE RATIO GEARBOX SHOWN IN EXAMPLE.
2. THREE STAGE INPUT MOUNTING, INPUT SPLINE AND RATIOS ARE SHOWN ON PAGE 2.