

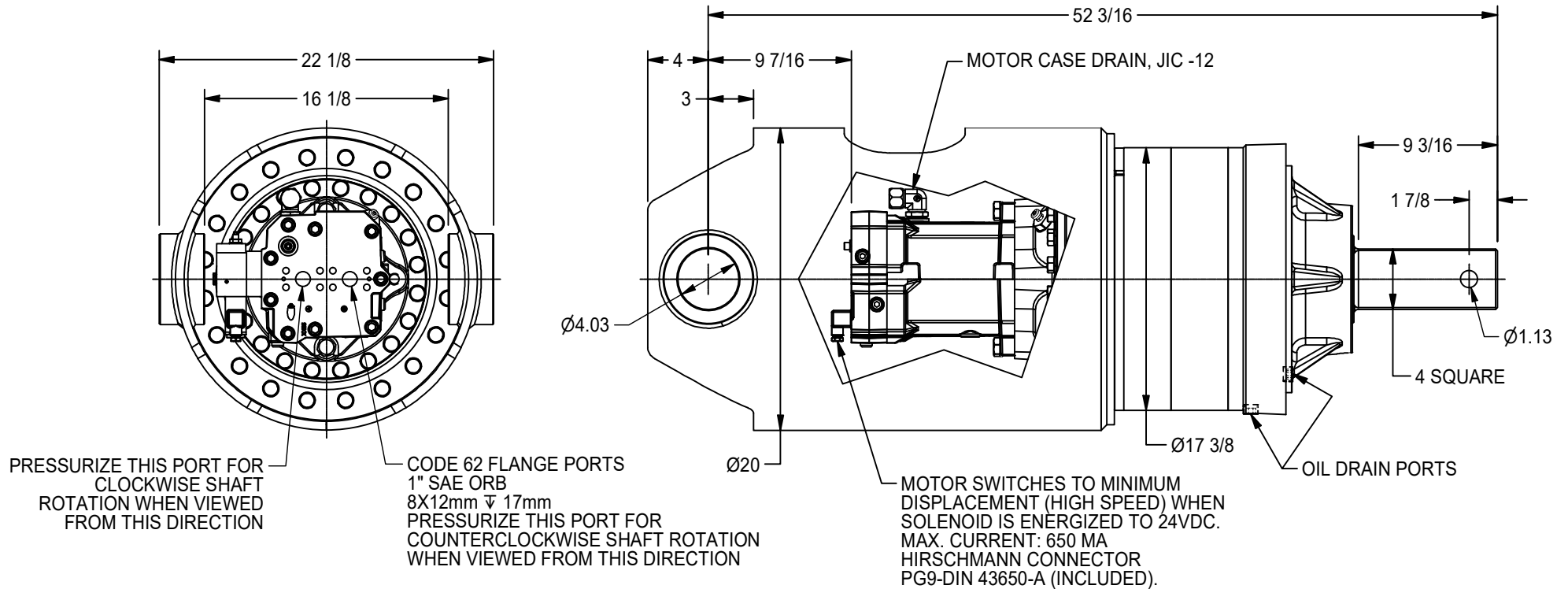


440 SERIES DRIVE HEAD

40,000 ft-lb (54,230 N-m) Maximum
 Typical Applications: Utility and Construction Industries

(913) 782-1238 (Tel)
 (913) 782-4206 (Fax)
Sales@Eskridgeinc.com
www.Eskridgeinc.com
 FORM: PSD440AA

SHEET 1 OF 3



NOTES: ▷

1. VALUES ARE SHOWN IN INCHES.



440 SERIES DRIVE HEAD

40,000 ft-lb (54,230 N-m) Maximum
 Typical Applications: Utility and Construction Industries

(913) 782-1238 (Tel)
 (913) 782-4206 (Fax)
Sales@Eskridgeinc.com
www.Eskridgeinc.com
 FORM: PSD440AA

SHEET 2 OF 3

Performance Ratings

Maximum Intermittent Output Torque: 40,000 ft-lb (54,230 N-m)
 Shaft Pressure Load: 45,000 lb (20,410 Kg)
 Shaft Pullout Load: 30,000 lb (13,610 Kg)
 *Shaft Side loading Not Recommended
 Maximum Input Speed: 4,000 rpm
 Maximum Operating Ambient Temperature: 110°F (43°C)
 Minimum Operating Ambient Temperature: -20°F (-28°C)

Consult your Eskridge representative to determine ratings for your specific application or configuration

Oil Capacities

44081
4.4 GAL
16.7 LITERS

ALL UNITS WITH MOTORS SHIPPED WITH OIL
 Use EP or API GL-5 Designated Lubricants

Motor Mount Dimensions

PILOT DIMENSIONS	BOLT CIRCLE
SAE 'D' Ø6.000/6.004 ▽ .62	4X 3/4-10 UNC-2B ▽1 ON Ø9.000 B.C.

Motor Specifications:

Type: Two Speed Axial Piston Motor
 Displacement: 8.27 cid (135.6 cc) Maximum, 3.97 cid (65 cc) Minimum
 Maximum System Pressure: 5,000 psi (345 bar)
 Maximum High Speed Flow: 70 gpm (265 lpm)
 Maximum Low Speed Flow: 125 gpm (473 lpm)
 Speed Control: 24 VDC > 26 W, 650 mA Max. Solenoid (Energized High Speed)
 Motor Case Pressure: 37 psi (2.5 bar) Maximum
 Case Drain Required
 Motor Must Be Filled With Hydraulic Oil Before Operation

Approximate Unit Weight

With Motor: 1,290 lb (585 kg)

Ordering Information

Example Part Number: 600110-54F136D9

MODEL	OUTPUT SHAFT	BOSS	MOTOR SUPPLIER	MOTOR	MOTOR MOUNT	INPUT SPLINE
44081	4	4	F	136	D	9
44081 - 81.25:1 GEAR RATIO 40,000 FT-LB	4 - 4 SQUARE	4 - Ø4	F - FACTORY U - USER	136 - 8.27 CID NN - NO MOTOR	D - SAE 'D' (4-BOLT)	9 - 13T 8/16 DP



440 SERIES DRIVE HEAD

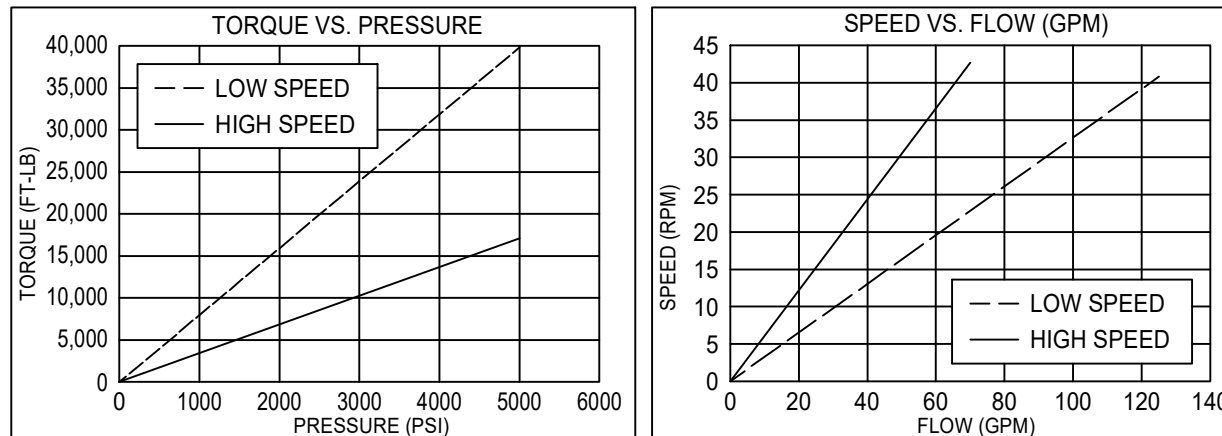
40,000 ft-lb (54,230 N-m) Maximum
Typical Applications: Utility and Construction Industries

(913) 782-1238 (Tel)
(913) 782-4206 (Fax)
Sales@Eskridgeinc.com
www.Eskridgeinc.com
FORM: PSD440AA

SHEET 3 OF 3

Torque and Speed Charts:

44081 With 136 Motor



NOTES: ▷

1. Starting torques are approximately 25% less than running torque.
2. Torque and speed charts are based on analytical calculations that use average gearbox and motor efficiencies.
3. System back pressure will reduce running torque proportionally.
4. Consult Eskridge Representative for Torque and Speed Charts for your specific application.

ESKRIDGE, INC. EXPRESSLY DISCLAIMS ANY IMPLIED WARRANTY OF MERCHANTABILITY OR FITNESS FOR ANY PARTICULAR PURPOSE FOR THE PRODUCTS SHOWN HEREIN. Any claims based on or related to the products shown herein will be satisfied only by repair or replacement in Eskridge, Inc.'s sole discretion to the extent covered by Eskridge's Product Warranty. Eskridge, Inc. is not liable for incidental or consequential damage of any kind or nature that relate in any way to the products shown herein. For complete warranty information, please refer to Eskridge, Inc.'s Product Warranty that applies to the products shown herein and is incorporated by this reference as if fully set forth. A copy of Eskridge, Inc.'s Product Warranty can be obtained by writing Eskridge, Inc. at P.O. Box 875, 1900 Kansas City Road, Olathe, Kansas 66061