

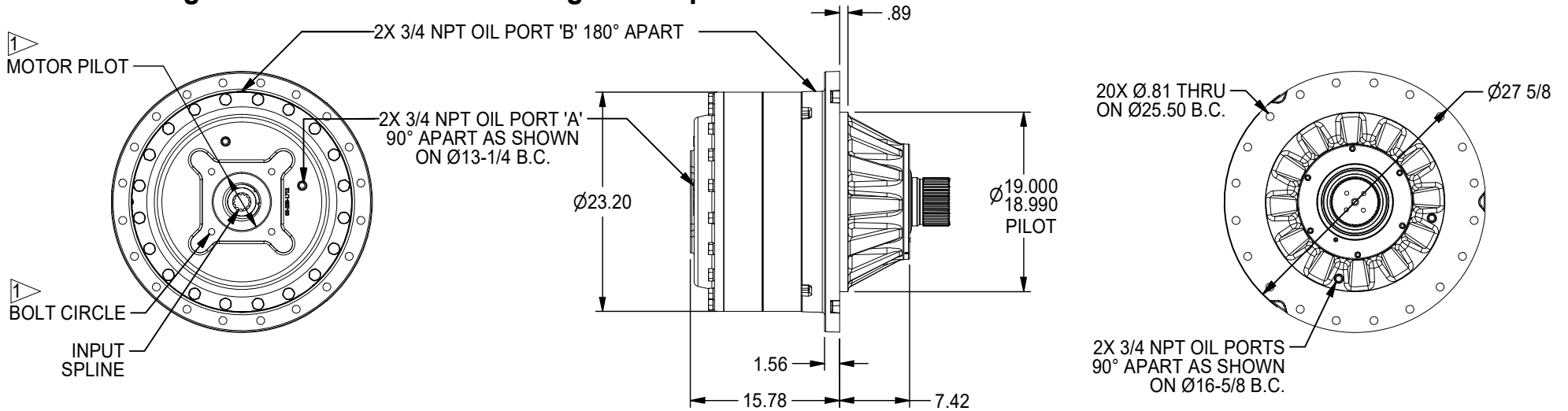


1400 GEAR DRIVE - SHAFT OUTPUT

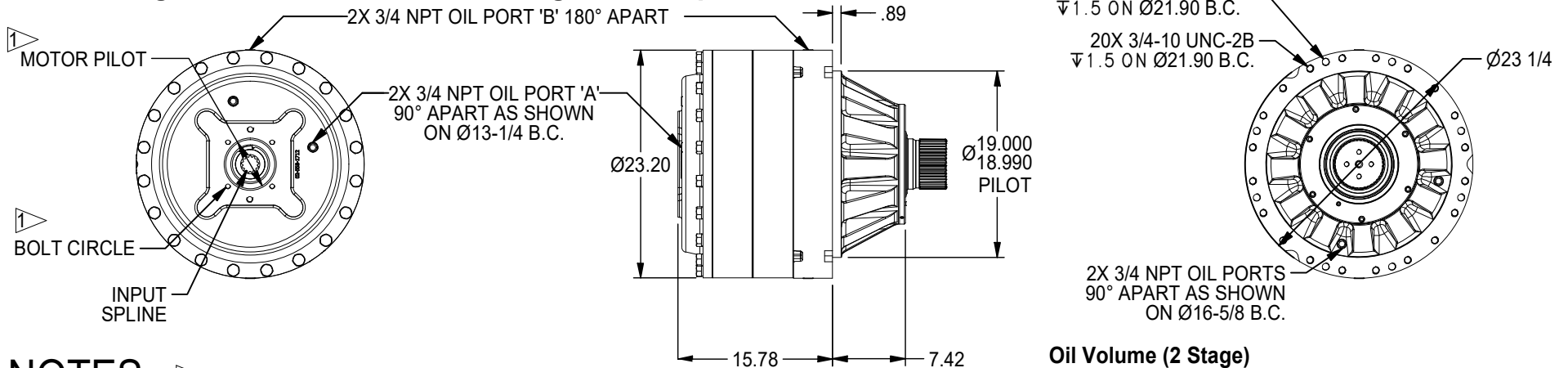
1,400,000 in-lb (158,179 N-m) Intermittent Rating 700,000 in-lb (79,089 N-m) Continuous Rating
 Typical Applications: Industrial, Marine or Mobile Equipment

(913) 782-1238 (Tel)
 (913) 782-4206 (Fax)
 Sales@Eskridgeinc.com
 www.Eskridgeinc.com
 FORM: PS1400L-AD
 SHEET 1 OF 5

1400 2-Stage General Dimensions Flanged 'A' Option



1400 2-Stage General Dimensions Flangless 'F' Option



NOTES:

1. SPECIFICATIONS CALLED OUT IN MOTOR MOUNT DIMENSIONS SECTION.
2. VALUES ARE SHOWN IN INCHES.
3. OUTPUT SHAFT ROTATION SAME DIRECTION AS INPUT ROTATION.

Oil Volume (2 Stage)

LUBRICATION	HORIZONTAL:	VERTICAL: PINION DOWN	VERTICAL: PINION UP
QUANTITY	4.5 Gal	7.5 Gal	7.5 Gal
OIL FILL LEVEL (GRADE GL-5 EP 80/90)	FILL TO: PORT 'A'	FILL TO: 1.5" FROM COVER PORT 'A'	FILL TO: PORT 'B'

All Units Shipped Without Oil



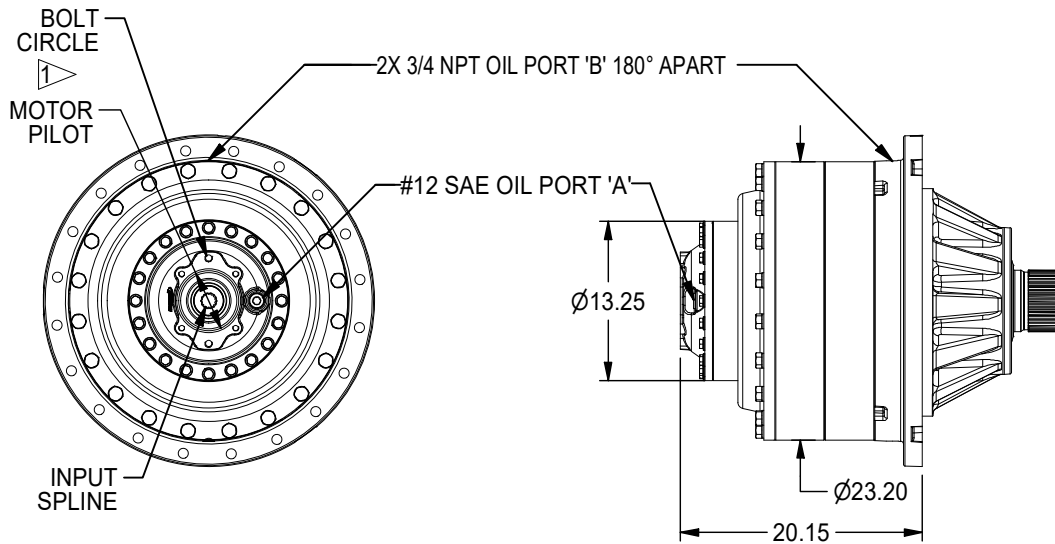
1400 GEAR DRIVE - SHAFT OUTPUT

1,400,000 in-lb (158,179 N-m) Intermittent Rating 700,000 in-lb (79,089 N-m) Continuous Rating
 Typical Applications: Industrial, Marine or Mobile Equipment

(913) 782-1238 (Tel)
 (913) 782-4206 (Fax)
Sales@Eskridgeinc.com
www.Eskridgeinc.com
 FORM: PS1400L-AD

SHEET 2 OF 5

1400 3-Stage with 254 Primary (Base dimensions identical to 2-Stage Option)



Available Ratios:

114	114.21:1
149	148.53:1
167	166.84:1
179	178.59:1
227	227.00:1
232	232.27:1
261	260.89:1
355	354.96:1

Input Mounting:

SAE "A" (2 & Modified 4 Bolt)
SAE "B" (2 & 4 Bolt)
SAE "C" (2 & 4 Bolt)
SAE "D" (4 Bolt)

Input Spline:

4 (14T 12/24 DP Spline)
9 (13T 8/16 DP Spline)

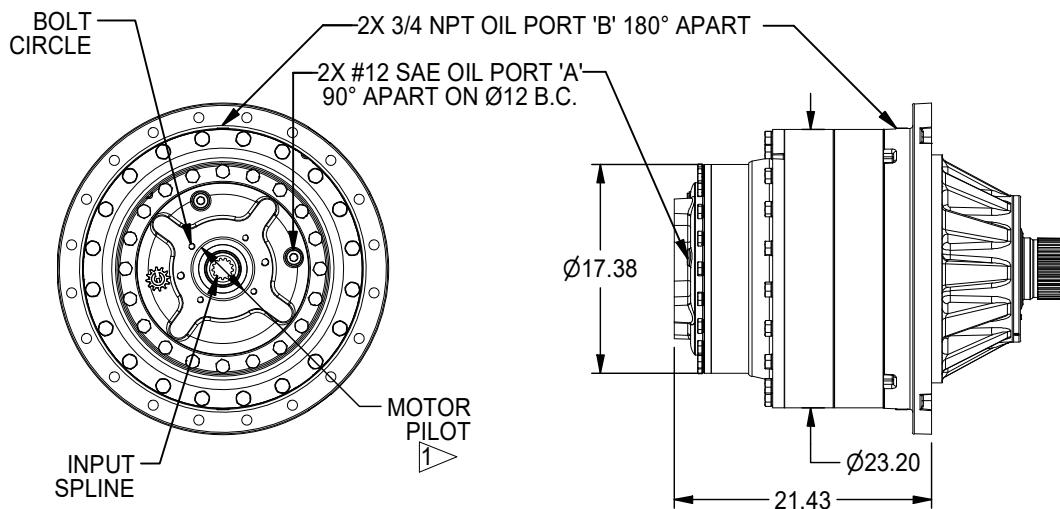
Oil Volume (3 Stage with 254 Primary)

LUBRICATION	ORIENTATION	HORIZONTAL:	VERTICAL: PINION DOWN	VERTICAL: PINION UP
QUANTITY		5.1 Gal	9.7 Gal	9.7 Gal
OIL FILL LEVEL (GRADE GL-5 EP 80/90)		FILL TO: PORT 'A'	FILL TO: 1.5" FROM COVER PORT 'A'	FILL TO: PORT 'B'

All Units Shipped Without Oil

(Other Ratios Available)
 Consult Eskridge Representative

1400 3-Stage with 440 Primary



Available Ratios:

104	104.54:1
155	155.44:1
163	163.47:1
201	200.96:1
243	243.07:1
314	314.24:1

Input Mounting:

SAE "C" (2 & 4 Bolt)
SAE "D" (4 Bolt)
SAE "E" (4 Bolt)

Input Spline:

4 (14T 12/24 DP Spline)
5 (15T 8/16 DP Spline)
8 (16T 8/16 DP Spline)
9 (13T 8/16 DP Spline)

Oil Volume (3 Stage with 440 Primary)

LUBRICATION	ORIENTATION	HORIZONTAL:	VERTICAL: PINION DOWN	VERTICAL: PINION UP
QUANTITY		5.8 Gal	10.2 Gal	10.2 Gal
OIL FILL LEVEL (GRADE GL-5 EP 80/90)		FILL TO: PORT 'A'	FILL TO: 1.5" FROM COVER PORT 'A'	FILL TO: PORT 'B'

All Units Shipped Without Oil

(Other Ratios Available)
 Consult Eskridge Representative

NOTES:

1. SPECIFICATIONS CALLED OUT IN MOTOR MOUNT DIMENSIONS SECTION.
2. 16T NOT AVAILABLE ON 201:1 AND 314:1 RATIOS.



1400 GEAR DRIVE - SHAFT OUTPUT

1,400,000 in-lb (158,179 N-m) Intermittent Rating 700,000 in-lb (79,089 N-m) Continuous Rating
Typical Applications: Industrial, Marine or Mobile Equipment

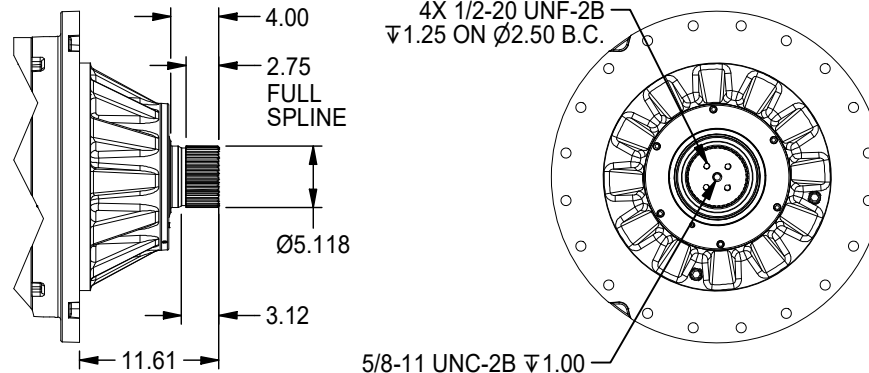
(913) 782-1238 (Tel)
(913) 782-4206 (Fax)
Sales@Eskridgeinc.com
www.Eskridgeinc.com
FORM: PS1400L-AD
SHEET 3 OF 5

Output Shaft Options *Values are shown as inches.*

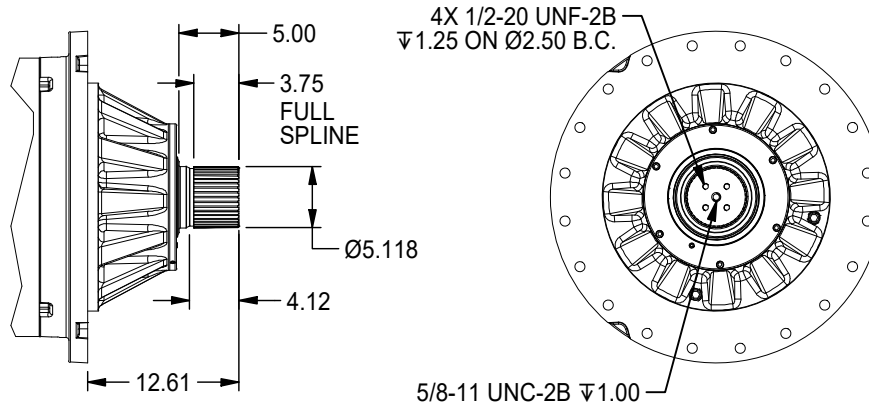
D1 - 40T 8/16 DP Spline

Adapter Hub Available
Part Number: 60-004-4042
Retainer Kit: 60-018-0901

See Hubs and Pinions Technical
Data Sheet for details.



D3 - Long 40T 8/16 DP Spline





1400 GEAR DRIVE - SHAFT OUTPUT

1,400,000 in-lb (158,179 N-m) Intermittent Rating 700,000 in-lb (79,089 N-m) Continuous Rating
 Typical Applications: Industrial, Marine or Mobile Equipment

(913) 782-1238 (Tel)
 (913) 782-4206 (Fax)
Sales@Eskridgeinc.com
www.Eskridgeinc.com
 FORM: PS1400L-AD

SHEET 4 OF 5

Performance Ratings

Maximum Intermittent Output Torque: 1,400,000 in-lb (158,179 N-m)
 Continuous Output Torque: 700,000 in-lb (79,089 N-m)
 Maximum Input Speed: 4,000 RPM
 Maximum Operating Ambient Temperature: 110° F (43° C)
 Minimum Operating Ambient Temperature: -20° F (-28° C)

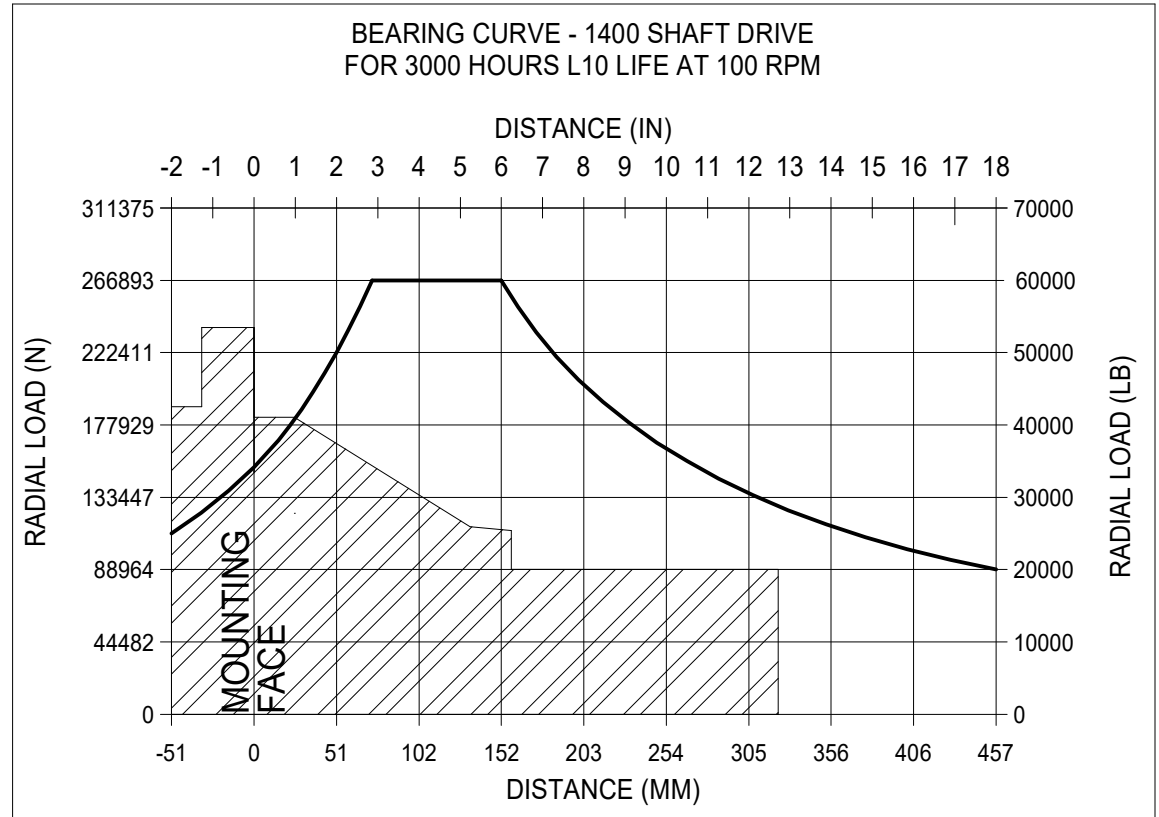
Consult your Eskridge representative to determine ratings for your specific application or configuration

Motor Mount Dimensions

PILOT DIMENSIONS	BOLT CIRCLE
SAE 'A' Ø3.250/3.254	2 & 4X 1/2-13 UNC-2B ∇5/8 ON Ø4.188 B.C.
SAE 'B' Ø4.001/4.005	2X 1/2-13 UNC-2B ∇.50 ON Ø5.75 B.C.
SAE 'C' Ø5.001/5.004	4X 1/2-13 UNC-2B ∇1 ON Ø6.375 B.C. 2X 5/8-11 UNC-2B ∇1 ON Ø7.125 B.C.
SAE 'D' Ø6.000/6.004	4X 3/4-10 UNC-2B ∇1 ON Ø9.000 B.C.
SAE 'E' Ø6.501/6.505	4X 3/4-10 UNC-2B ∇1 ON Ø12.500 B.C.

Approximate Unit Weight

Single Stage: 1,350 - 1,425 lb (614-648 kg)
 Two Stage: 1,400 lb (635 kg)
 Three Stage: 1,700 lb (771 kg)



To adjust for loads and speeds other than those shown on above curve, use this formula:

$$\text{Adjusted Life (hours)} = 3000 \left(\frac{100 \text{ rpm}}{\text{Speed (Adjusted)}} \right) \times \left(\frac{\text{Load (Curve)}}{\text{Load (Adjusted)}} \right)^{10/3}$$



1400 GEAR DRIVE - SHAFT OUTPUT

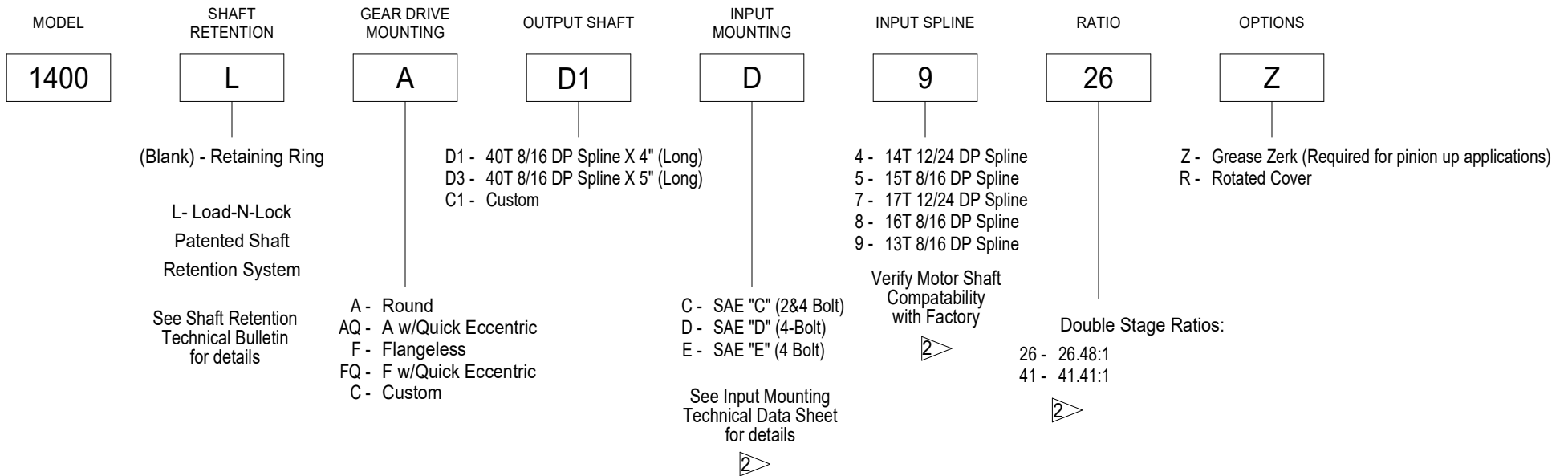
1,400,000 in-lb (158,179 N-m) Intermittent Rating 700,000 in-lb (79,089 N-m) Continuous Rating
Typical Applications: Industrial, Marine or Mobile Equipment

(913) 782-1238 (Tel)
(913) 782-4206 (Fax)
Sales@Eskridgeinc.com
www.Eskridgeinc.com
FORM: PS1400L-AD

SHEET 5 OF 5

Ordering Information

Example Part Number: 1400LAD1D9-26-Z



NOTES: ▷

1. TWO STAGE RATIO GEARBOX SHOWN IN EXAMPLE.
2. THREE STAGE INPUT MOUNTING, INPUT SPLINE AND RATIOS ARE SHOWN ON PAGE 2.