

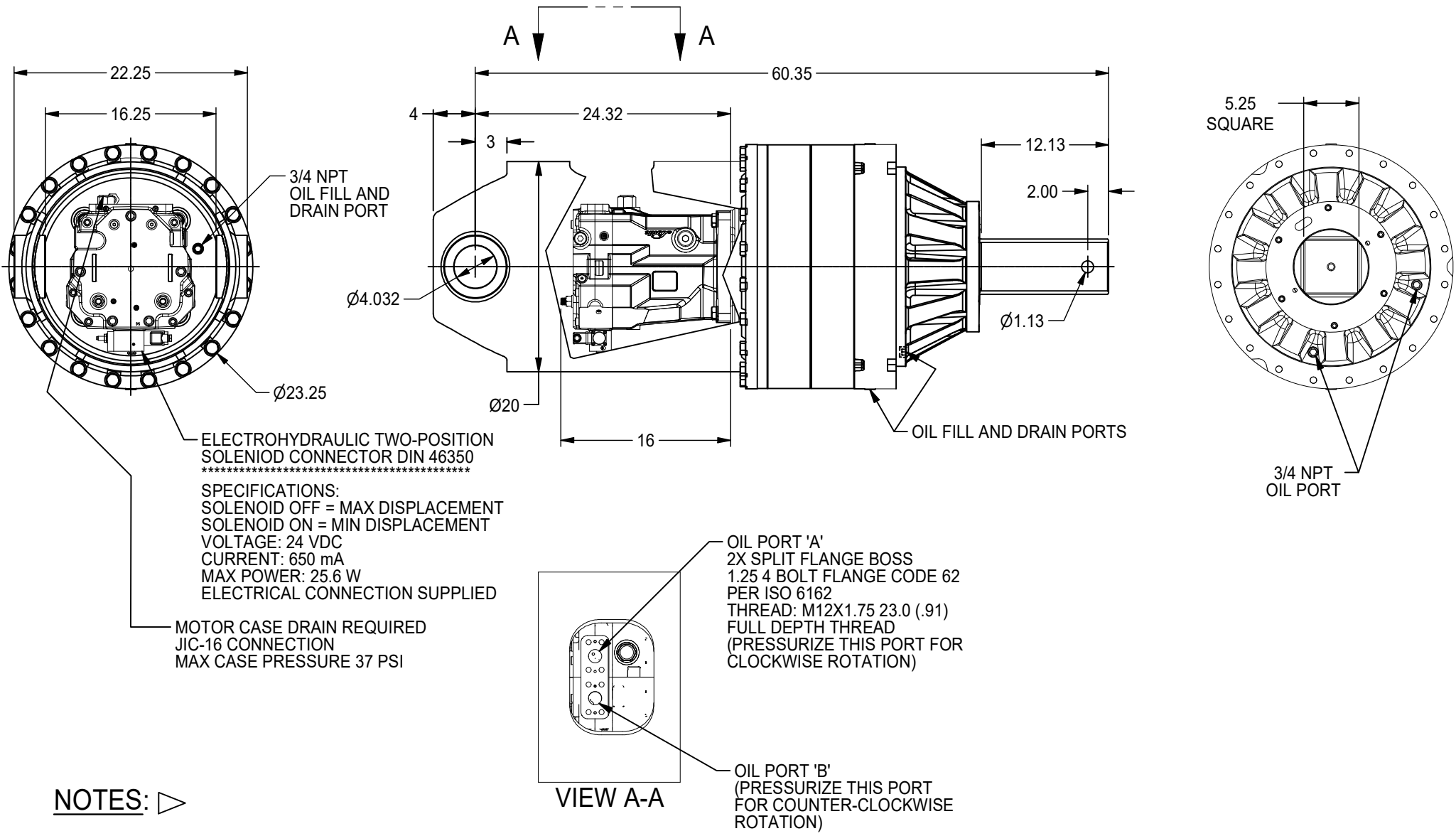


1000 SERIES DRIVE HEAD

83,000 ft-lb (112,533 N-m) Maximum
 Typical Applications: Utility and Construction Industries

(913) 782-1238 (Tel)
 (913) 782-4206 (Fax)
Sales@Eskridgeinc.com
www.Eskridgeinc.com
 FORM: PSD1000AB

SHEET 1 OF 3



NOTES: ▷

1. VALUES ARE SHOWN IN INCHES.



1000 SERIES DRIVE HEAD

83,000 ft-lb (112,533 N-m) Maximum
Typical Applications: Utility and Construction Industries

(913) 782-1238 (Tel)
(913) 782-4206 (Fax)
Sales@Eskridgeinc.com
www.Eskridgeinc.com
FORM: PSD1000AB

SHEET 2 OF 3

Performance Ratings

Maximum Intermittent Output Torque: 83,000 ft-lb (112,530 N-m)
Shaft Pressure Load: 95,000 lb (43,090 Kg)
Shaft Pullout Load: 50,000 lb (22,680 Kg)
*Shaft Side loading Not Recommended
Maximum Input Speed: 4,000 rpm
Maximum Operating Ambient Temperature: 110°F (43°C)
Minimum Operating Ambient Temperature: -20°F (-28°C)

Consult your Eskridge representative to determine ratings for your specific application or configuration

Motor Mount Dimensions

| PILOT DIMENSIONS | BOLT CIRCLE |
|----------------------------|--------------------------------------|
| SAE 'E' Ø6.501/6.505 ▽ .75 | 4X 3/4-10 UNC-2B ▽ 1 ON Ø12.500 B.C. |

Motor Specifications:

Type: Two Speed Axial Piston Motor
Displacement: 14.52 cid (238 cc) Maximum, 4.96 cid (126 cc) Minimum
Maximum System Pressure: 5,000 psi (345 bar)
Maximum High Speed Flow: 100 gpm (378 lpm)
Maximum Low Speed Flow: 100 gpm (378 lpm)
Speed Control: Electro-Hydraulic Solenoid (Energized High Speed)
Case Drain Required
Motor Must Be Filled With Hydraulic Oil Before Operation

Approximate Unit Weight

With Motor: 1,900 lb (860 kg)

Oil Capacities

| |
|-----------|
| 100096 |
| 9.5 GAL |
| 36 LITERS |

ALL UNITS WITH MOTORS SHIPPED WITH OIL
Use EP or API GL-5 Designated Lubricants

Ordering Information

Example Part Number: 100096-54F121E5

| MODEL | OUTPUT SHAFT | BOSS | MOTOR SUPPLIER | MOTOR | MOTOR MOUNT | INPUT SPLINE |
|---|------------------|--------|-------------------------|----------------------------------|-------------------------|-----------------|
| 100096 | 5 | 4 | F | 190 | E | 5 |
| 100096 - 96.00:1 GEAR RATIO 83,000 FT-LB | 5 - 5-1/4 SQUARE | 4 - Ø4 | F - FACTORY U - USER | 190 - 14.52 CID NN - NO MOTOR | E - SAE 'E' (4-BOLT) | 5 - 15T 8/16 DP |



1000 SERIES DRIVE HEAD

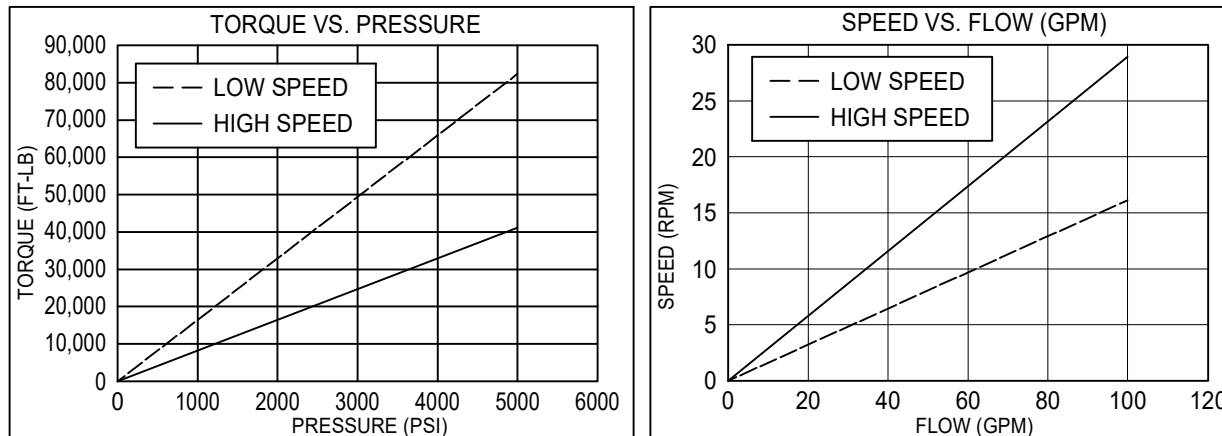
83,000 ft-lb (112,533 N-m) Maximum
Typical Applications: Utility and Construction Industries

(913) 782-1238 (Tel)
(913) 782-4206 (Fax)
Sales@Eskridgeinc.com
www.Eskridgeinc.com
FORM: PSD1000AB

SHEET 3 OF 3

Torque and Speed Charts:

100096 With 190 Motor



NOTES:

1. Starting torques are approximately 25% less than running torque.
2. Torque and speed charts are based on analytical calculations that use average gearbox and motor efficiencies.
3. System back pressure will reduce running torque proportionally.
4. Consult Eskridge Representative for Torque and Speed Charts for your specific application.

ESKRIDGE, INC. EXPRESSLY DISCLAIMS ANY IMPLIED WARRANTY OF MERCHANTABILITY OR FITNESS FOR ANY PARTICULAR PURPOSE FOR THE PRODUCTS SHOWN HEREIN.
Any claims based on or related to the products shown herein will be satisfied only by repair or replacement in Eskridge, Inc.'s sole discretion to the extent covered by Eskridge's Product Warranty. Eskridge, Inc. is not liable for incidental or consequential damage of any kind or nature that relate in any way to the products shown herein. For complete warranty information, please refer to Eskridge, Inc.'s Product Warranty that applies to the products shown herein and is incorporated by this reference as if fully set forth. A copy of Eskridge, Inc.'s Product Warranty can be obtained by writing Eskridge, Inc. at P.O. Box 875, 1900 Kansas City Road, Olathe, Kansas 66061