

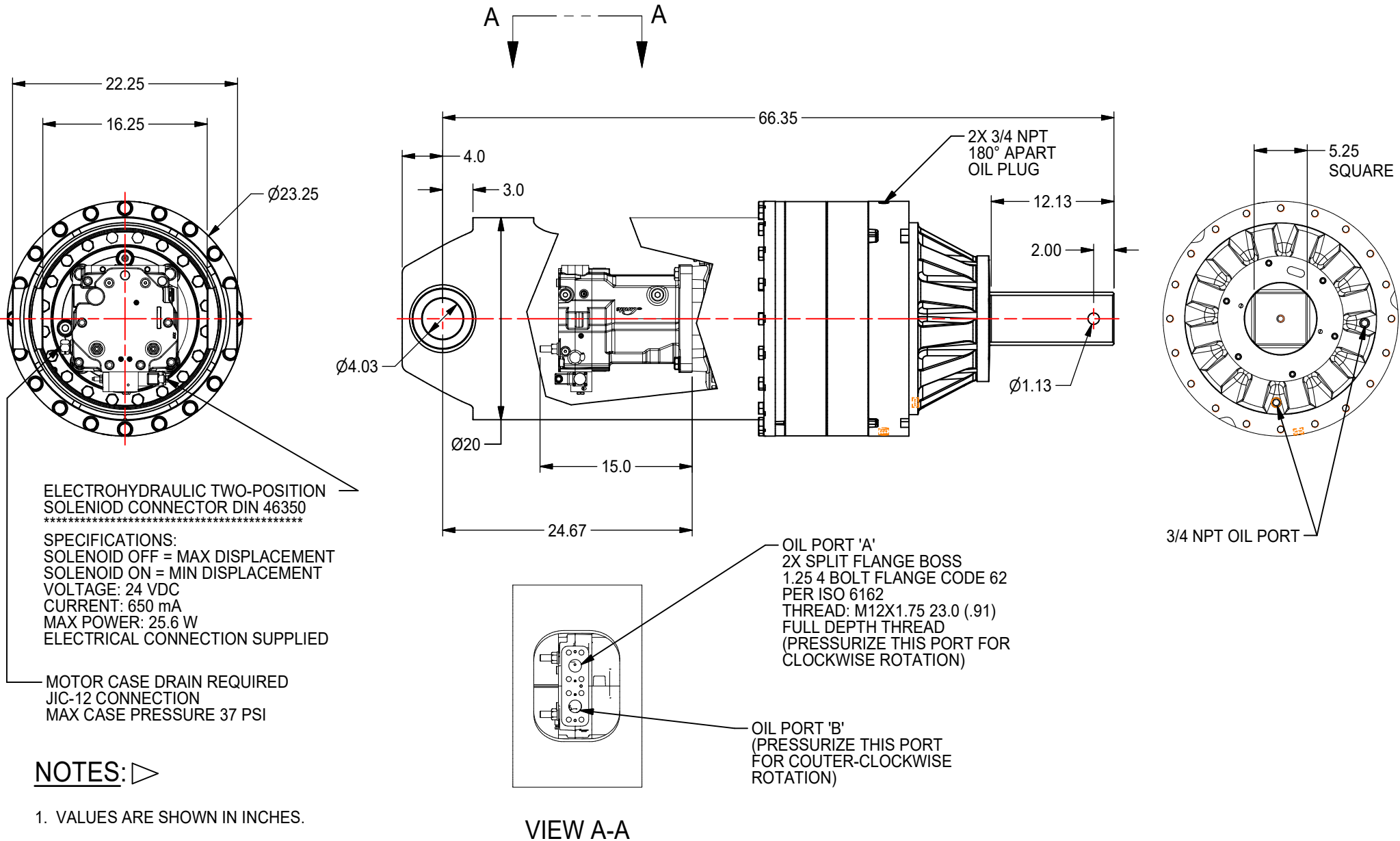


1400 SERIES DRIVE HEAD

115,000 ft-lb (155,920 N-m) Maximum
 Typical Applications: Utility and Construction Industries

(913) 782-1238 (Tel)
 (913) 782-4206 (Fax)
Sales@Eskridgeinc.com
www.Eskridgeinc.com
 FORM: PSD1400AB

SHEET 1 OF 3



NOTES: ▷

1. VALUES ARE SHOWN IN INCHES.



1400 SERIES DRIVE HEAD

115,000 ft-lb (155,920 N-m) Maximum
 Typical Applications: Utility and Construction Industries

(913) 782-1238 (Tel)
 (913) 782-4206 (Fax)
Sales@Eskridgeinc.com
www.Eskridgeinc.com
 FORM: PSD1400AB

SHEET 2 OF 3

Performance Ratings

Maximum Intermittent Output Torque: 115,000 ft-lb (155,920 N-m)
 Shaft Pressure Load: 95,000 lb (43,090 Kg)
 Shaft Pullout Load: 50,000 lb (22,680 Kg)
 *Shaft Side loading Not Recommended
 Maximum Input Speed: 4,000 rpm
 Maximum Operating Ambient Temperature: 110°F (43°C)
 Minimum Operating Ambient Temperature: -20°F (-28°C)

Consult your Eskridge representative to determine ratings for your specific application or configuration

Oil Capacities

1400155
10.25 GAL
39 LITERS

ALL UNITS WITH MOTORS SHIPPED WITH OIL
 Use EP or API GL-5 Designated Lubricants

Motor Mount Dimensions

PILOT DIMENSIONS	BOLT CIRCLE
SAE 'E' Ø6.501/6.505 ∇ .75	4X 3/4-10 UNC-2B ∇1 ON Ø12.500 B.C.

Motor Specifications:

Type: Two Speed Axial Piston Motor
 Displacement: 12.81 cid (210 cc) Maximum, 7.02 cid (115 cc) Minimum
 Maximum System Pressure: 5,000 psi (345 bar)
 Maximum High Speed Flow: 100 gpm (378 lpm)
 Maximum Low Speed Flow: 100 gpm (378 lpm)
 Speed Control: Electro-Hydraulic Solenoid (Energized High Speed)
 Case Drain Required
 Motor Must Be Filled With Hydraulic Oil Before Operation

Approximate Unit Weight

With Motor: 2,100 lb (953 kg)

Ordering Information

Example Part Number: 1400155-54F120E5

MODEL	OUTPUT SHAFT	BOSS	MOTOR SUPPLIER	MOTOR	MOTOR MOUNT	INPUT SPLINE
1400155	5	4	F	189	E	5
1400155 - 155.4:1 GEAR RATIO 115,000 FT-LB	5 - 5-1/4 SQUARE	4 - Ø4	F - FACTORY U - USER	189 - 12.81 CID NN - NO MOTOR	E - SAE 'E' (4-BOLT)	5 - 15T 8/16 DP



1400 SERIES DRIVE HEAD

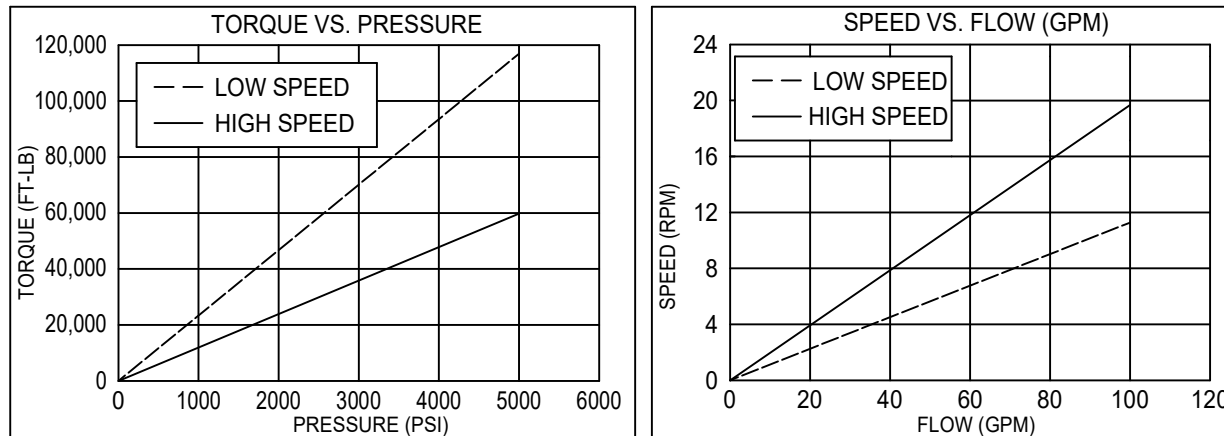
115,000 ft-lb (155,920 N-m) Maximum
Typical Applications: Utility and Construction Industries

(913) 782-1238 (Tel)
(913) 782-4206 (Fax)
Sales@Eskridgeinc.com
www.Eskridgeinc.com
FORM: PSD1400AB

SHEET 3 OF 3

Torque and Speed Charts:

1400155 With 189 Motor



NOTES:

1. Starting torques are approximately 25% less than running torque.
2. Torque and speed charts are based on analytical calculations that use average gearbox and motor efficiencies.
3. System back pressure will reduce running torque proportionally.
4. Consult Eskridge Representative for Torque and Speed Charts for your specific application.

ESKRIDGE, INC. EXPRESSLY DISCLAIMS ANY IMPLIED WARRANTY OF MERCHANTABILITY OR FITNESS FOR ANY PARTICULAR PURPOSE FOR THE PRODUCTS SHOWN HEREIN.
Any claims based on or related to the products shown herein will be satisfied only by repair or replacement in Eskridge, Inc.'s sole discretion to the extent covered by Eskridge's Product Warranty. Eskridge, Inc. is not liable for incidental or consequential damage of any kind or nature that relate in any way to the products shown herein. For complete warranty information, please refer to Eskridge, Inc.'s Product Warranty that applies to the products shown herein and is incorporated by this reference as if fully set forth. A copy of Eskridge, Inc.'s Product Warranty can be obtained by writing Eskridge, Inc. at P.O. Box 875, 1900 Kansas City Road, Olathe, Kansas 66061