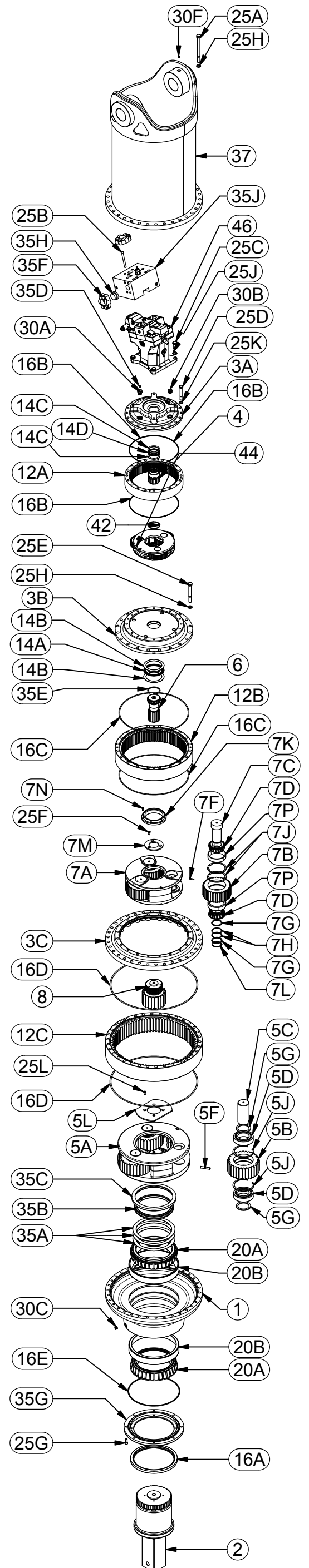




150224-54F123BPM EFFECTIVITY: 12-10-14 SN: 130683

PARTS LIST				
GROUP	ITEM	QTY	PART NUMBER	DESCRIPTION
	1	1	18-004-3001	BASE
	2	1	18-004-4001	SHAFT - DH150
3	-	-	-	COVERS
	3A	1	42-004-2032	COVER
	3B	1	60-004-1962	COVER ADAPTOR
	3C	1	18-004-2003	COVER ADAPTOR
	4	1	42-004-1532	INPUT GEAR
5	-	(1)	18-005-2001	CARRIER ASSEMBLY
	5A	1	18-004-1009	CARRIER
	5B	3	18-004-1003	PLANET GEAR
	5C	3	18-004-1004	PLANET SHAFT
	5D	6	01-110-0131	BEARING
	5F	3	01-153-0242	ROLL PIN
	5G	6	45-004-1008	THRUST WASHER
	5J	6	01-160-0829	RETAINING RING
	-8	1	18-004-1005	SECONDARY CARRIER RETAINER - (1800)
	5L	1	18-004-1005	SECONDARY CARRIER RETAINER - (1800)
	6	1	60-004-1963	SUN GEAR
7	-	(1)	60-005-2213	CARRIER ASSEMBLY
	7A	1	60-004-1964	CARRIER SEC
	7B	3	60-004-1112	PLANET GEAR SEC
	7C	3	60-004-1262	PLANET SHAFT - SEC. 600/1400
	7D	6	01-102-0210	TAPERED BEARING CONE
	7E	3	01-153-0150	ROLL PIN 1/4" X 1-3/8"
	7F	6	60-004-1291	WASHER - SEC. PLANET 600 1000 1400
	7H	*	60-004-1321	SHIM-SECONDARY PLANET
	7J	6	01-160-0500	RETAINING RING
	7K	1	18-004-1015	THRUST PLATE
	7L	3	01-160-0490	RETAINING RING; EXTERNAL; 5100-262
	7M	1	60-004-1352	SECONDARY CARRIER RETAINER
	7N	6	01-150-1100	SHCS
	7P	6	01-103-0210	TAPERED BEARING CUP
	8	1	18-004-1002	SUN GEAR
12	-	-	-	RING GEARS
	12A	1	42-004-1042	RING GEAR - PRI (440)
	12B	1	60-004-1193	RING GEAR - SEC- 600; PRI 600/1000 SIMPLE
	12C	1	18-004-1001	RING GEAR
14	-	-	-	THRUST WASHERS AND BEARINGS
	14A	1	01-112-0340	THRUST BRG AXK120155
	14B	2	01-112-0350	THRUST RACE AS120155
	14C	2	01-112-0400	THRUST WASHER
	14D	1	01-112-0410	THRUST BEARING
16	-	-	18-016-2001	SEAL KIT
	16A	1	01-405-0840	SEAL
	16B	2	01-402-0840	O-RING (PARKER #280)
	16C	2	01-402-0660	O-RING
	16D	2	01-402-1017	O-RING 34.5 ID
	16E	1	01-402-1018	O-RING
20	-	-	-	OUTPUT SHAFT BEARINGS
	20A	2	01-102-0350	BEARING CONE
	20B	2	01-103-0350	BEARING CUP
25	-	-	-	HARDWARE
	25A	34	01-150-2075	HEX HEAD CAP SCREW
	25B	8	01-150-2077	SOCKET HEAD CAP SCREW
	25C	4	01-150-1890	HHCS (3/4-10 UNC 1.75" GR5)
	25D	20	01-150-0870	HEX HEAD CAP SCREW
	25E	20	01-150-2076	HEX HEAD CAP SCREW
	25F	3	01-150-1590	FLAT HEAD HEX SOCKET CAPSCREW
	25G	8	01-150-0030	SOCKET HEAD CAP SCREW
	25H	54	01-166-0350	HARDWASHER - 3/4; 1.25 O.D.
	25J	4	01-166-0360	LOCKWASHER 3/4" MED.
	25K	20	01-166-0040	LOCKWASHER - 5/8 ZINC PLATED
	25L	4	01-150-2042	FLAT HEAD HEX SOCKET CAPSCREW 3/8-16 X 3/4" UNF GR8
30	-	-	-	PLUGS & FITTINGS
	30A	1	01-201-0520	ADAPTOR SAE-12-1/8 NPT
	30B	1	01-208-0030	HOLLOW HEX PLUG (05HP-12)
	30C	2	01-208-0060	PLUG
	30F	2	01-215-0050	GREASE FITTING
35	-	-	-	MISCELLANEOUS
	35A	*	18-004-1007	SHIM - (1800)
	35B	1	18-004-1012	SPLIT RING - (1800)
	35C	1	18-004-1011	LOCK RING - (1800)
	35D	1	01-216-0020	RELIEF VALVE
	35E	1	01-160-0826	RETAINING RING
	35F	2	01-201-0778	SPLIT FLANGE KIT
	35G	1	18-004-1000	SEAL CARRIER - (1800)
	35H	2	01-201-0779	SPLIT FLANGE PLUG
	35J	1	01-308-0220	ANTI SPIN BACK MANIFOLD
	37	1	18-005-2010	BAIL ASSEMBLY
	38	3	42-004-1342	PLANET SHAFT - PRI (440)
	39	6	42-004-1352	SPACER - LOOSE ROLLER 440
	40	6	42-004-1362	THRUST WASHER
	41	60	01-106-0040	PLANET ROLLER
	42	1	01-160-0690	RETAINING RING
	43	3	01-153-0220	ROLL PIN (3/16X1-3/4)
	44	1	42-004-1072	PRI CARRIER
	45	3	42-004-1112	PLANET GEAR - PRI
	46	1	01-304-1230	MOTOR



* NUMBER OF SHIMS DEPENDANT UPON DESIRED BEARING PRELOAD
X150224-54F123BPM REV: A 12-09-14 HWP