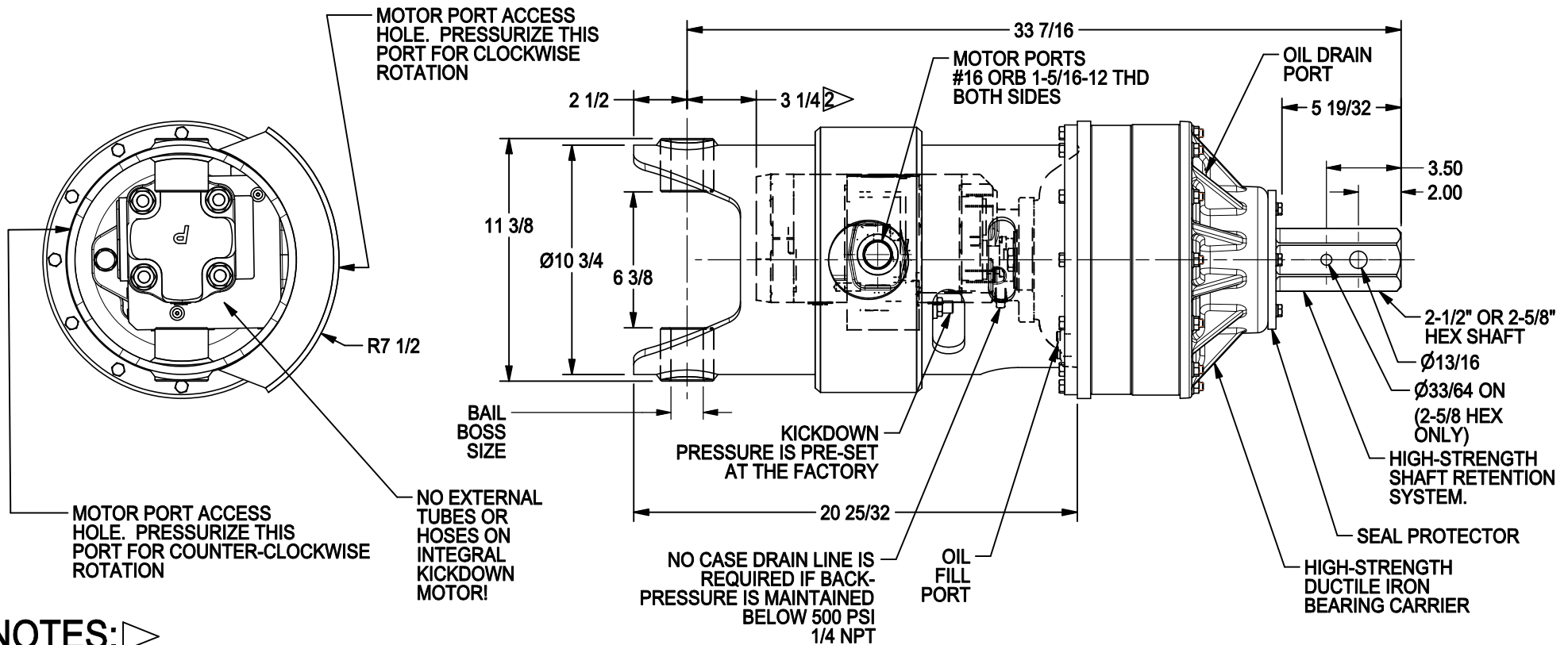




78 SERIES WITH INTEGRAL KICK-DOWN DRIVE HEAD

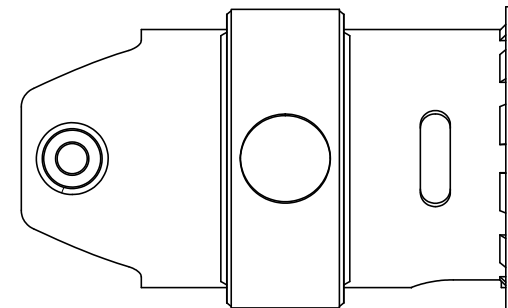
12,000 ft-lb, Automatic Kickdown, 2500 PSI & 3500 PSI. New motor with kickdown system built-in!
 No external lines subject to damage and leaks!
 Typical Applications: Utility and Construction

(913) 782-1238 (Tel)
 (913) 782-4206 (Fax)
 Sales@Eskridgeinc.com
 www.Eskridgeinc.com
 FORM: PS78IK2-AA
 SHEET 1 OF 3



- 1 THE KICKDOWN SYSTEM OPERATES IN EITHER DIRECTION. THE DRIVE HEAD STARTS IN HIGH SPEED, LOW TORQUE AND SHIFTS TO LOW SPEED, HIGH TORQUE WHEN THE DIFFERENTIAL PRESSURE REACHES 2000 PSI FOR MOTORS RATED TO 2500 PSI AND 2750 PSI FOR 3500 PSI MOTORS. THE DRIVE WILL REMAIN IN LOW SPEED, HIGH TORQUE UNTIL THE DRIVE HEAD IS STOPPED AND PRESSURE REMOVED. THEN IT SHIFTS BACK TO HIGH SPEED, LOW TORQUE. NO SHIFT LINE IS REQUIRED.
- 2 SUBJECT TO CHANGE WITH DIFFERENT MOTORS.
- 3 VALUES ARE SHOWN IN INCHES.

SHOWN WITH "ROTATED" BAIL. "STANDARD" SHOWN BELOW.





78 SERIES WITH INTEGRAL KICK-DOWN DRIVE HEAD

12,000 ft-lb, Automatic Kickdown, 2500 PSI & 3500 PSI. New motor with kickdown system built-in!
 No external lines subject to damage and leaks!
 Typical Applications: Utility and Construction

(913) 782-1238 (Tel)
 (913) 782-4206 (Fax)
Sales@Eskridgeinc.com
www.Eskridgeinc.com
 FORM: PS78IK2-AA

SHEET 2 OF 3

Performance Ratings

Maximum Intermittent Output Torque: TO 12,000 FT-LB (16,272 N-m)
 Shaft Pressure Load Rating: 19,000 lb (8,600 kg)
 Shaft Pullout Load Rating: 21,000 lb (9,500 kg)
 * Shaft Side Loading Not Recommended.
 Maximum Input Speed: 3,000 RPM
 Maximum Operating Ambient Temperature: 110° F (43° C)
 Minimum Operating Ambient Temperature: -20° F (-28° C)

Oil Capacities

7848
6.5 PINTS 3.1 LITERS

ALL UNITS WITH MOTORS SHIPPED WITH OIL
 Use EP or API GL-5 Designated Lubricants

Motor Mount Dimensions

PILOT DIMENSIONS	BOLT CIRCLE
SAE 'C' Ø5.001/5.004	2X 5/8-11 UNC-2B ∇1 ON Ø7.125 B.C.

Motor Specifications:

Two Speed Hydraulic Gear Motors
 Maximum System Pressure: 2500 psi for motor code 141 /
 3500 psi for motor code 139.
 Motors are internally drained and generally don't require a case drain. If back pressure exceeds 500 psi a case drain is required.

Consult your Eskridge representative to determine ratings for your specific application or configuration

Approximate Unit Weight

With Motor: 370 lb (168.2 kg)

Ordering Information
 Example Part Number: 7848-6P5F139RK2

MODEL	OUTPUT SHAFT	BAIL BOSS	MOTOR SUPPLIER	MOTOR PART NUMBER	OPTIONS
7848	6P	5	F	139	RK2
7848 48:1 GEAR RATIO UP TO 12,000 FT-LB TORQUE: LOW SPEED 3,200 FT-LB TORQUE: HIGH SPEED	5P- 2 1/2" HEX 6P- 2 5/8" HEX	4- Ø1 1/4 5- Ø1 1/2	F- FACTORY U- USER	141- 2,500 psi Rated 139- 3,500 psi Rated	R- ROTATED BAIL 90° FOR BACKHOE AND EXCAVATOR USE BLANK- STANDARD BAIL FOR MOST UTILITY DIGGER DERRICK TRUCKS K2- KICKDOWN FORWARD AND REVERSE may be ordered only with motor code 139 and 141 Motors



78 SERIES WITH INTEGRAL KICK-DOWN DRIVE HEAD

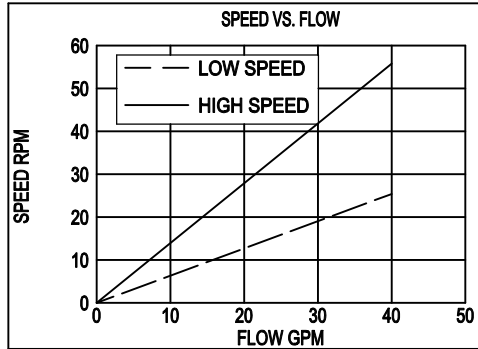
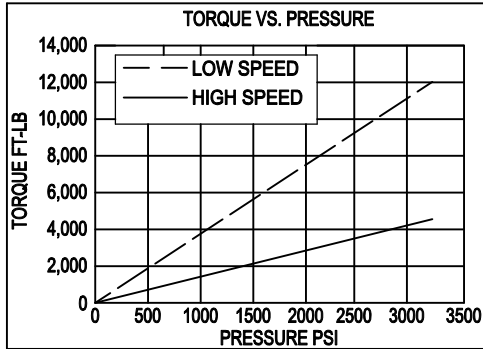
12,000 ft-lb, Automatic Kickdown, 2500 PSI & 3500 PSI. New motor with kickdown system built-in!
 No external lines subject to damage and leaks!
 Typical Applications: Utility and Construction

(913) 782-1238 (Tel)
 (913) 782-4206 (Fax)
 Sales@Eskridgeinc.com
 www.Eskridgeinc.com
 FORM: PS78IK2-AA

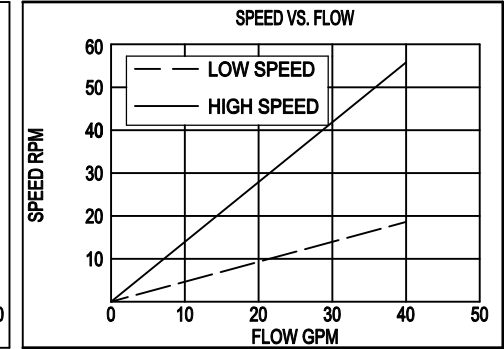
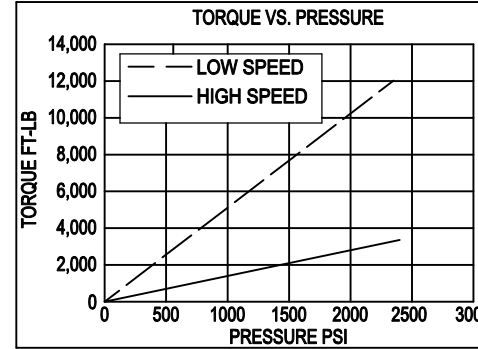
SHEET 3 OF 3

Torque and Speed Charts:

78-48 DRIVE HEAD WITH CODE 139 MOTOR (3200 PSI MAX)



78-48 DRIVE HEAD WITH CODE 141 MOTOR (2500 PSI MAX)



NOTES:

- * Starting torques are approximately 25% less than running torque.
- * Torque and speed charts are based on analytical calculations that use average gearbox and motor efficiencies.
- * System back pressure will reduce running torque proportionally.
- * Consult Eskridge Representative for Torque and Speed Charts for your specific application.

ESKRIDGE, INC. EXPRESSLY DISCLAIMS ANY IMPLIED WARRANTY OF MERCHANTABILITY OR FITNESS FOR ANY PARTICULAR PURPOSE FOR THE PRODUCTS SHOWN HEREIN.

Any claims based on or related to the products shown herein will be satisfied only by repair or replacement in Eskridge, Inc.'s sole discretion to the extent covered by Eskridge's Product Warranty. Eskridge, Inc. is not liable for incidental or consequential damage of any kind or nature that relate in any way to the products shown herein. For complete warranty information, please refer to Eskridge, Inc.'s Product Warranty that applies to the products shown herein and is incorporated by this reference as if fully set forth. A copy of Eskridge, Inc.'s Product Warranty can be obtained by writing Eskridge, Inc. at P.O. Box 875, 1900 Kansas City Road, Olathe, Kansas 66061