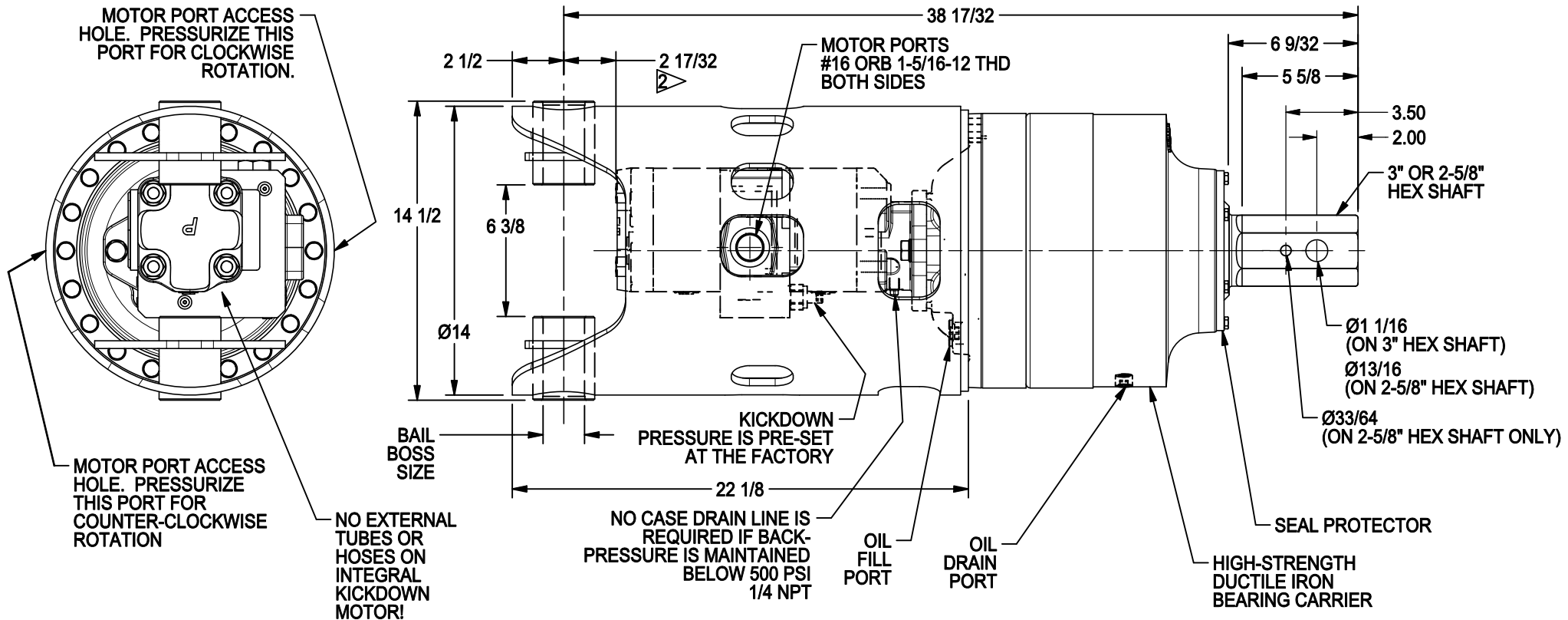




# 75 SERIES WITH INTEGRAL KICK-DOWN DRIVE HEAD

20,000 ft-lb, Automatic Kickdown, 2750 PSI & 3500 PSI. New motor with kickdown system built-in!  
 No external lines subject to damage and leaks!  
 Typical Applications: Utility and Construction Industries.

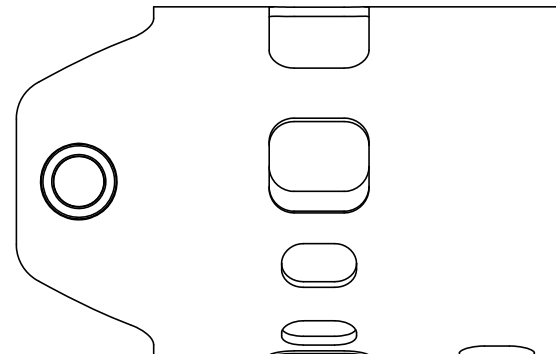
(913) 782-1238 (Tel)  
 (913) 782-4206 (Fax)  
 Sales@Eskridgeinc.com  
 www.Eskridgeinc.com  
 FORM: PS751K2-AA  
 SHEET 1 OF 3



## NOTES: ▷

- 1 THE KICKDOWN SYSTEM OPERATES IN EITHER DIRECTION. THE DRIVE HEAD STARTS IN HIGH SPEED, LOW TORQUE AND SHIFTS TO LOW SPEED, HIGH TORQUE WHEN THE DIFFERENTIAL PRESSURE REACHES 2000 PSI FOR MOTORS RATED TO 2500 PSI AND 2750 PSI FOR 3500 PSI MOTORS. THE DRIVE WILL REMAIN IN LOW SPEED, HIGH TORQUE UNTIL THE DRIVE HEAD IS STOPPED AND PRESSURE REMOVED. THEN IT SHIFTS BACK TO HIGH SPEED, LOW TORQUE. NO SHIFT LINE IS REQUIRED.
- 2 SUBJECT TO CHANGE WITH DIFFERENT MOTOR.
- 3 VALUES ARE SHOWN IN INCHES.

SHOWN WITH "ROTATED" BAIL. "STANDARD SHOWN BELOW.





# 75 SERIES WITH INTEGRAL KICK-DOWN DRIVE HEAD

20,000 ft-lb, Automatic Kickdown, 2750 PSI & 3500 PSI. New motor with kickdown system built-in!  
 No external lines subject to damage and leaks!  
 Typical Applications: Utility and Construction Industries.

(913) 782-1238 (Tel)  
 (913) 782-4206 (Fax)  
[Sales@Eskridgeinc.com](mailto:Sales@Eskridgeinc.com)  
[www.Eskridgeinc.com](http://www.Eskridgeinc.com)  
 FORM: PS75IK2-AA

SHEET 2 OF 3

## Performance Ratings

Maximum Intermittent Output Torque: TO 20,000 FT-LB (27,116 N-m)  
 Shaft Pressure Load: 30,000 lb (13,600 kg)  
 Shaft Pullout Load: 30,000 lb (13,600 kg)  
 \* Shaft Side Load Not Recommended.  
 Maximum Input Speed: 3,000 RPM  
 Maximum Operating Ambient Temperature: 110° F (43° C)  
 Minimum Operating Ambient Temperature: -20° F (-28° C)

Consult your Eskridge representative to determine rating for your application or configuration.

## Oil Capacities

7551
10 PINTS 4.7 LITERS

ALL UNITS WITH MOTORS SHIPPED WITH OIL  
 Use EP or API GL-5 Designated Lubricants

## Motor Mount Dimensions

PILOT DIMENSIONS	BOLT CIRCLE
SAE 'C' Ø5.001/5.004	2X 5/8-11 UNC-2B ∇1 ON Ø7.125 B.C.

## Motor Specifications:

Two Speed Hydraulic Gear Motors  
 Maximum System Pressure: 2500 psi for motor code 142 /  
 3500 psi for motor code 140.  
 Motors are internally drained and generally don't require a case drain. If back pressure exceeds 500 psi a case drain is required.

Consult your Eskridge representative to determine ratings for your specific application or configuration

## Approximate Unit Weight

With Motor: 500 lb (226.8 kg)

Ordering Information  
 Example Part Number: 7551L-32F140RK2

MODEL	OUTPUT SHAFT	BAIL BOSS	MOTOR SUPPLIER	MOTOR PART NUMBER	OPTIONS
7551L	3	2	F	140	RK2
7551L 51.42:1 GEAR RATIO UP TO 20,000 FT-LB TORQUE: LOW SPEED UP TO 8,000 FT-LB TORQUE: HIGH SPEED UP TO RPM (16-LOW SPEED, 28 RPM HI SPEED) EQUIPPED WITH LOAD-N-LOCK® SHAFT RETENTION SYSTEM.	6- 2 5/8" HEX 3- 3" HEX	5- Ø1 1/2 2- Ø2	F- FACTORY U- USER	142- 2,750 psi Rated 140- 3,500 psi Rated	R- ROTATED BAIL 90° FOR BACKHOE AND EXCAVATOR USE  BLANK- STANDARD BAIL FOR MOST UTILITY DIGGER DERRICK TRUCKS  K2- KICKDOWN FORWARD AND REVERSE may be ordered only with motor code 140 and 142 Motors



# 75 SERIES WITH INTEGRAL KICK-DOWN DRIVE HEAD

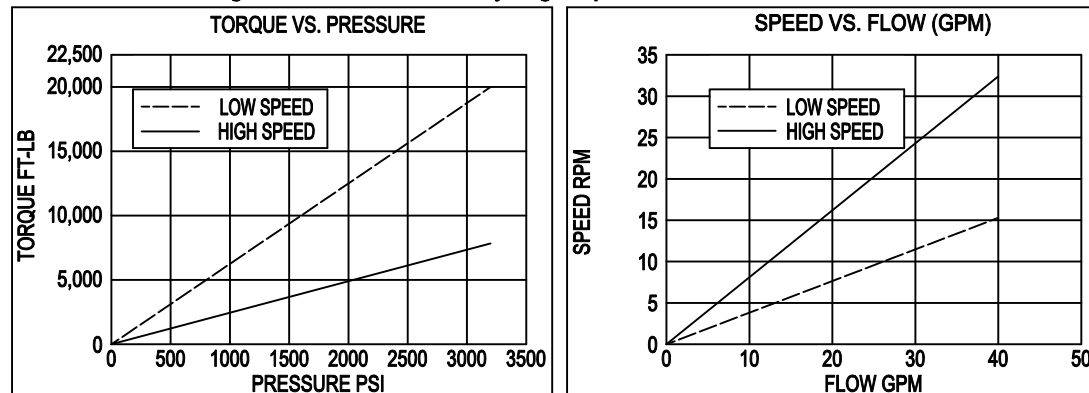
20,000 ft-lb, Automatic Kickdown, 2750 PSI & 3500 PSI. New motor with kickdown system built-in!  
 No external lines subject to damage and leaks!  
 Typical Applications: Utility and Construction Industries.

(913) 782-1238 (Tel)  
 (913) 782-4206 (Fax)  
[Sales@Eskridgeinc.com](mailto:Sales@Eskridgeinc.com)  
[www.Eskridgeinc.com](http://www.Eskridgeinc.com)  
 FORM: PS75IK2-AA

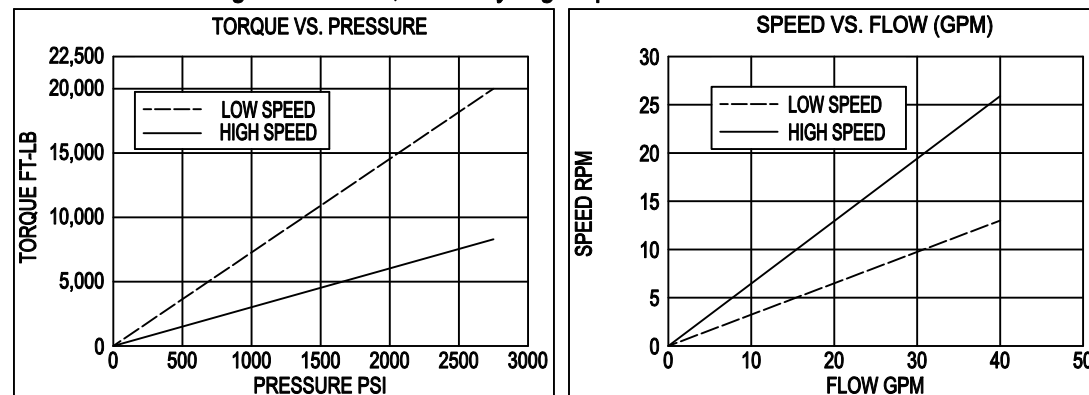
SHEET 3 OF 3

## Torque and Speed Charts:

7551 With 140 Integral Kickdown, Normally High-Speed Motor



7551 With 142 Integral Kickdown, Normally High-Speed Motor



### NOTES:

- \* Starting torques are approximately 25% less than running torque.
- \* System back pressure will reduce running torque proportionally.
- \* Consult Eskridge Representative for Torque and Speed Charts for your specific application.
- \* Torque and speed charts are based on analytical calculations that use average gearbox and motor efficiencies.

**ESKRIDGE, INC. EXPRESSLY DISCLAIMS ANY IMPLIED WARRANTY OF MERCHANTABILITY OR FITNESS FOR ANY PARTICULAR PURPOSE FOR THE PRODUCTS SHOWN HEREIN.**

Any claims based on or related to the products shown herein will be satisfied only by repair or replacement in Eskridge, Inc.'s sole discretion to the extent covered by Eskridge's Product Warranty. Eskridge, Inc. is not liable for incidental or consequential damage of any kind or nature that relate in any way to the products shown herein. For complete warranty information, please refer to Eskridge, Inc.'s Product Warranty that applies to the products shown herein and is incorporated by this reference as if fully set forth. A copy of Eskridge, Inc.'s Product Warranty can be obtained by writing Eskridge, Inc. at P.O. Box 875, 1900 Kansas City Road, Olathe, Kansas 66061