



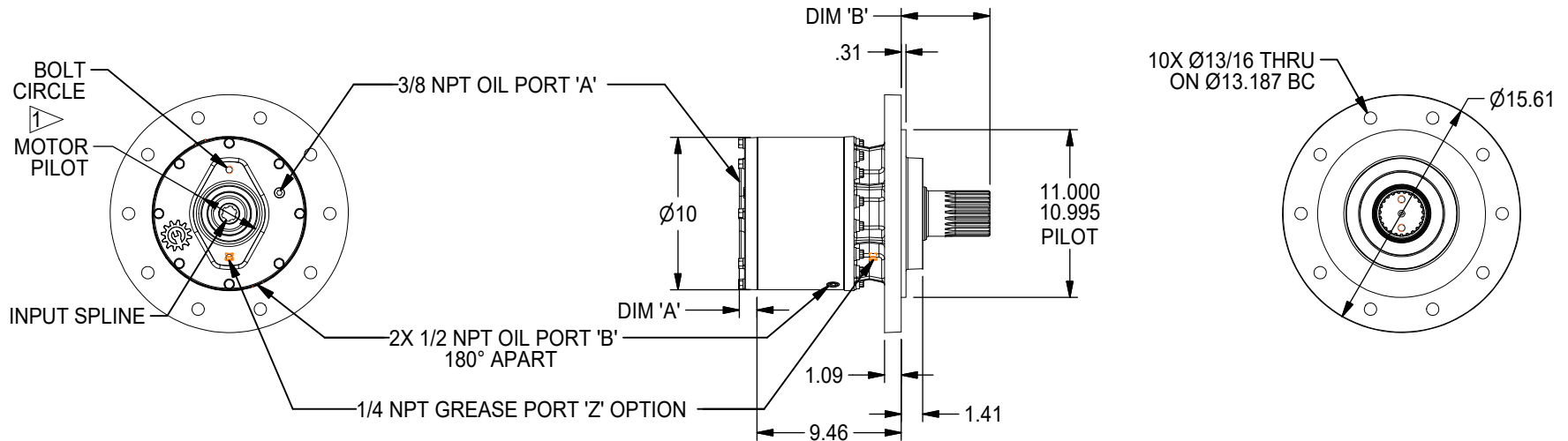
# 130 GEAR DRIVE - SHAFT OUTPUT

130,000 in-lb (14,688 N-m) Intermittent Rating 65,000 in-lb (7,344 N-m) Continuous Rating  
Typical Applications: Industrial, Marine or Mobile Equipment

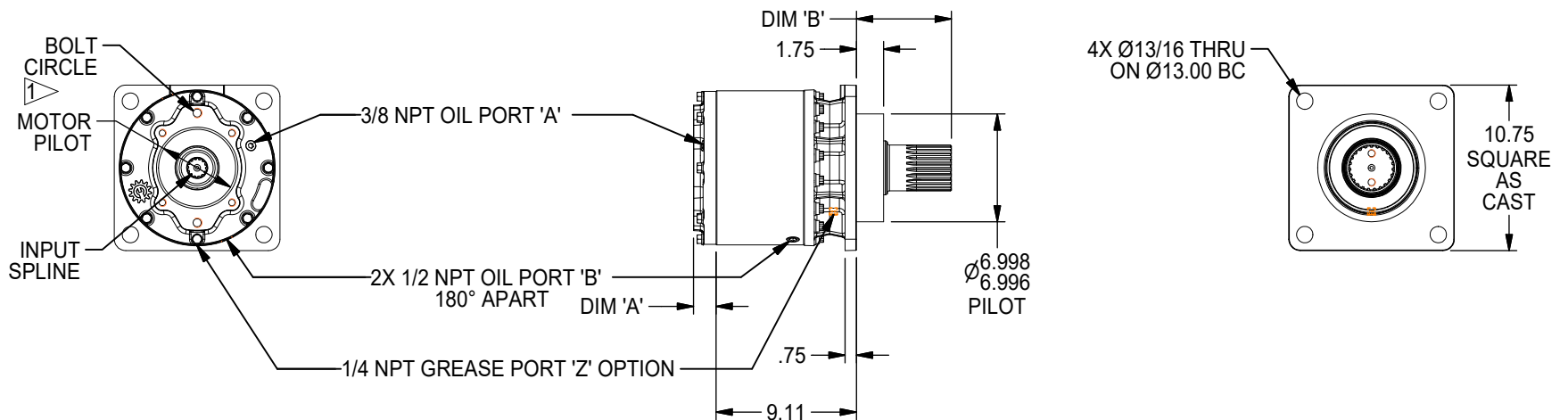
(913) 782-1238 (Tel)  
(913) 782-4206 (Fax)  
Sales@Eskridgeinc.com  
www.Eskridgeinc.com  
FORM: PS130L-AC

SHEET 1 OF 9

## 130 1&2-Stage General Dimensions Flanged 'A' Option



## 130 1&2-Stage General Dimensions Square 'B' Option





# 130 GEAR DRIVE - SHAFT OUTPUT

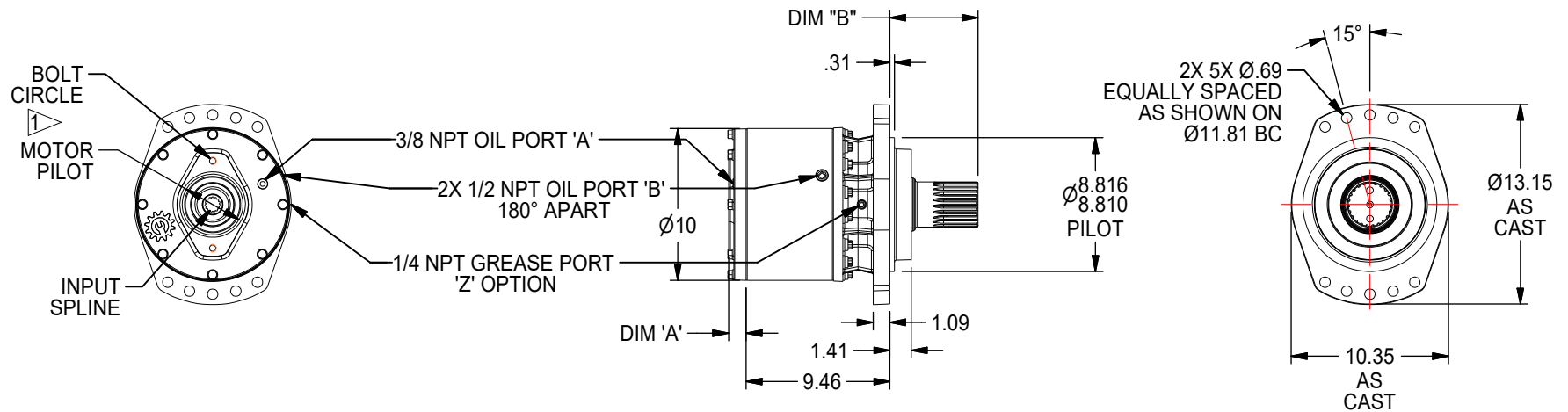
130,000 in-lb (14,688 N-m) Intermittent Rating 65,000 in-lb (7,344 N-m) Continuous Rating

Typical Applications: Industrial, Marine or Mobile Equipment

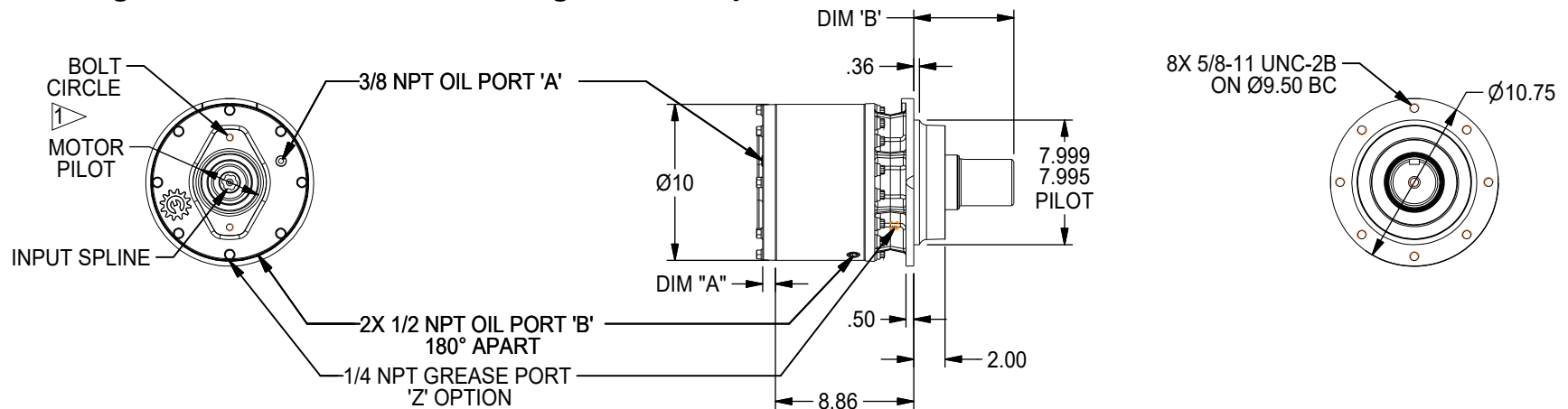
(913) 782-1238 (Tel)  
(913) 782-4206 (Fax)  
Sales@Eskridgeinc.com  
www.Eskridgeinc.com  
FORM: PS130L-AC

SHEET 2 OF 9

## 130 1&2-Stage General Dimensions Flangeless 'E' Option



## 130 1&2-Stage General Dimensions Flangeless 'F' Option





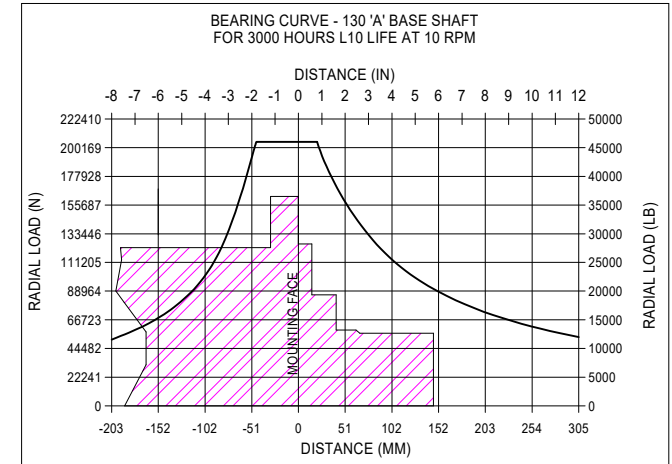
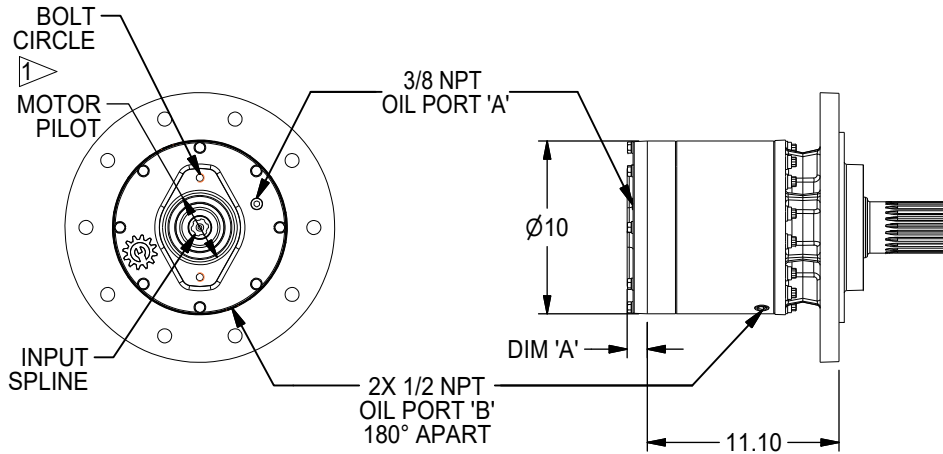
# 130 GEAR DRIVE - SHAFT OUTPUT

130,000 in-lb (14,688 N-m) Intermittent Rating 65,000 in-lb (7,344 N-m) Continuous Rating

Typical Applications: Industrial, Marine or Mobile Equipment

(913) 782-1238 (Tel)  
 (913) 782-4206 (Fax)  
[Sales@Eskridgeinc.com](mailto:Sales@Eskridgeinc.com)  
[www.Eskridgeinc.com](http://www.Eskridgeinc.com)  
 FORM: PS130L-AC

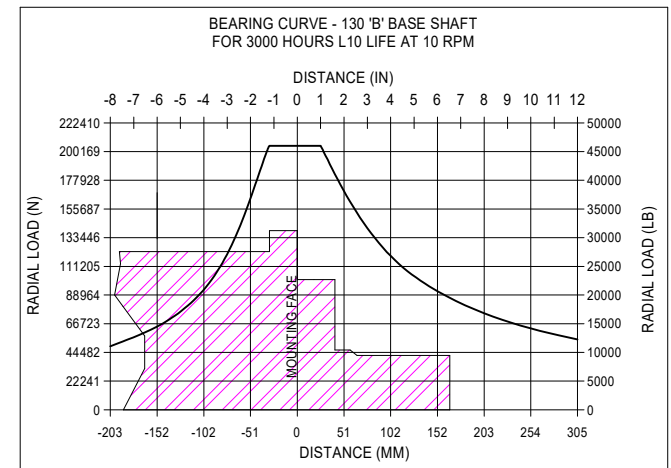
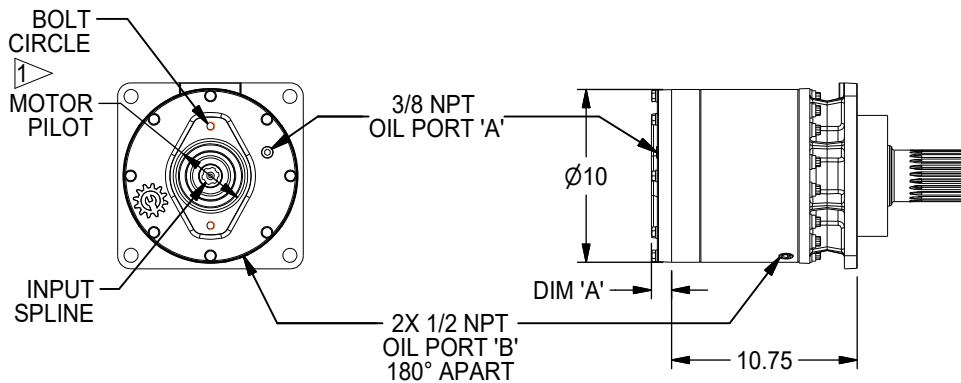
## 3-stage 'A' Option (Base Dimensions Identical to 1&2-Stage Options)



To adjust for loads and speeds other than those shown on above curve, use this formula:

$$\text{Adjusted Life (hours)} = 3000 \left( \frac{10 \text{ rpm}}{\text{Speed (Adjusted)}} \right) \times \left( \frac{\text{Load (Curve)}}{\text{Load (Adjusted)}} \right)^{10/3}$$

## 3-stage 'B' Option (Base Dimensions Identical to 1&2-Stage Options)



To adjust for loads and speeds other than those shown on above curve, use this formula:

$$\text{Adjusted Life (hours)} = 3000 \left( \frac{10 \text{ rpm}}{\text{Speed (Adjusted)}} \right) \times \left( \frac{\text{Load (Curve)}}{\text{Load (Adjusted)}} \right)^{10/3}$$



# 130 GEAR DRIVE - SHAFT OUTPUT

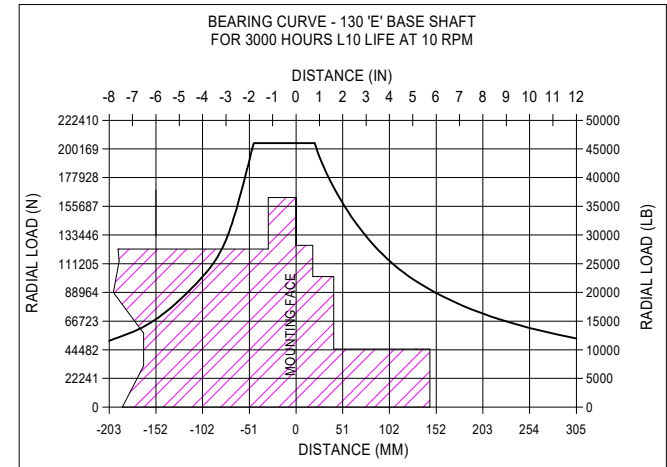
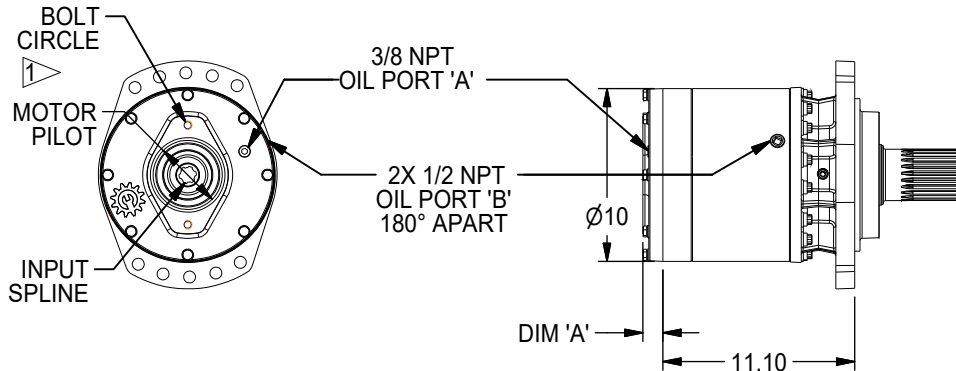
130,000 in-lb (14,688 N-m) Intermittent Rating 65,000 in-lb (7,344 N-m) Continuous Rating

Typical Applications: Industrial, Marine or Mobile Equipment

(913) 782-1238 (Tel)  
 (913) 782-4206 (Fax)  
[Sales@Eskridgeinc.com](mailto:Sales@Eskridgeinc.com)  
[www.Eskridgeinc.com](http://www.Eskridgeinc.com)  
 FORM: PS130L-AC

SHEET 4 OF 9

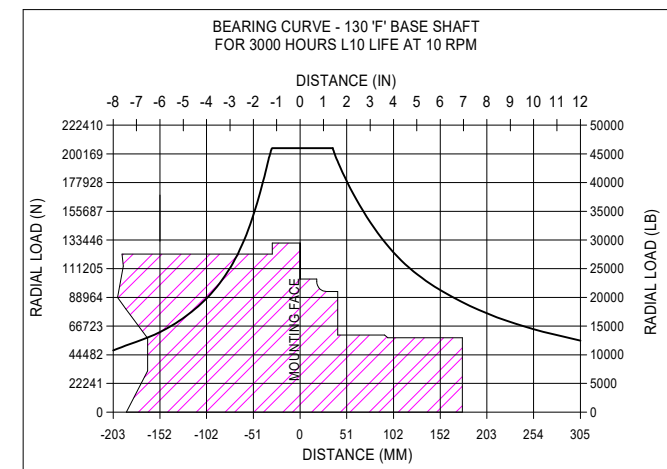
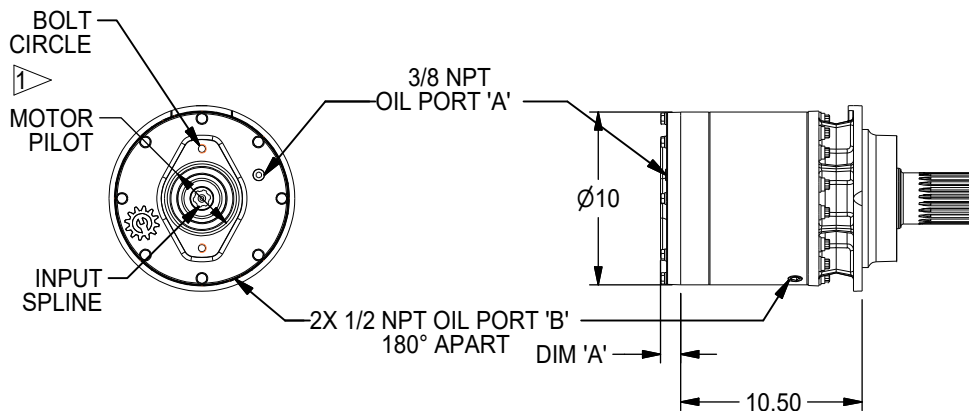
## 3-stage 'E' Option (Base Dimensions Identical to 1&2-Stage Options)



To adjust for loads and speeds other than those shown on above curve, use this formula:

$$\text{Adjusted Life (hours)} = 3000 \left( \frac{10 \text{ rpm}}{\text{Speed (Adjusted)}} \right) \times \left( \frac{\text{Load (Curve)}}{\text{Load (Adjusted)}} \right)^{10/3}$$

## 3-stage 'F' Option (Base Dimensions Identical to 1&2-Stage Options)



To adjust for loads and speeds other than those shown on above curve, use this formula:

$$\text{Adjusted Life (hours)} = 3000 \left( \frac{10 \text{ rpm}}{\text{Speed (Adjusted)}} \right) \times \left( \frac{\text{Load (Curve)}}{\text{Load (Adjusted)}} \right)^{10/3}$$



# 130 GEAR DRIVE - SHAFT OUTPUT

130,000 in-lb (14,688 N-m) Intermittent Rating 65,000 in-lb (7,344 N-m) Continuous Rating  
Typical Applications: Industrial, Marine or Mobile Equipment

(913) 782-1238 (Tel)  
(913) 782-4206 (Fax)  
Sales@Eskridgeinc.com  
www.Eskridgeinc.com  
FORM: PS130L-AC

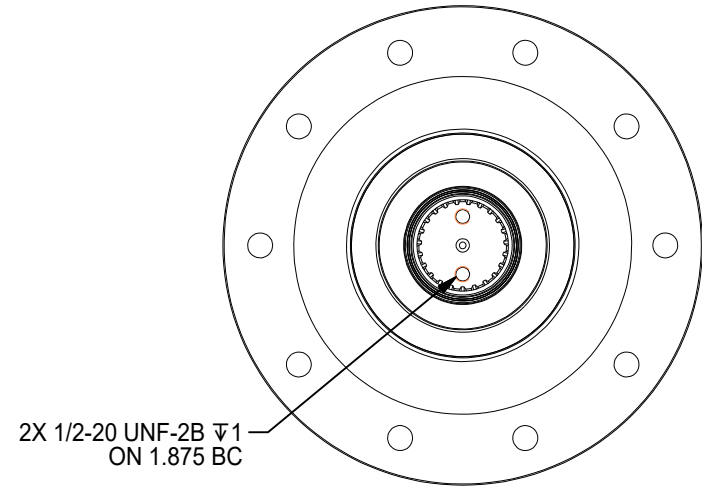
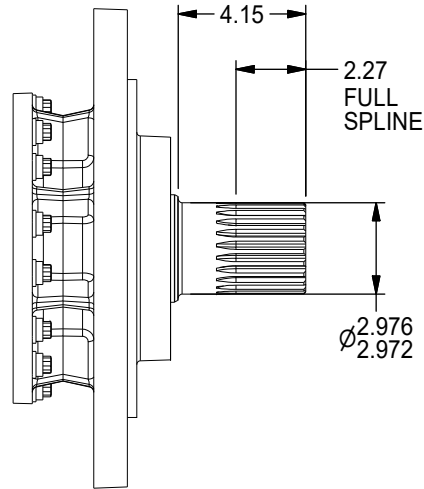
SHEET 5 OF 9

## Output Shaft Options *Values are shown as inches.*

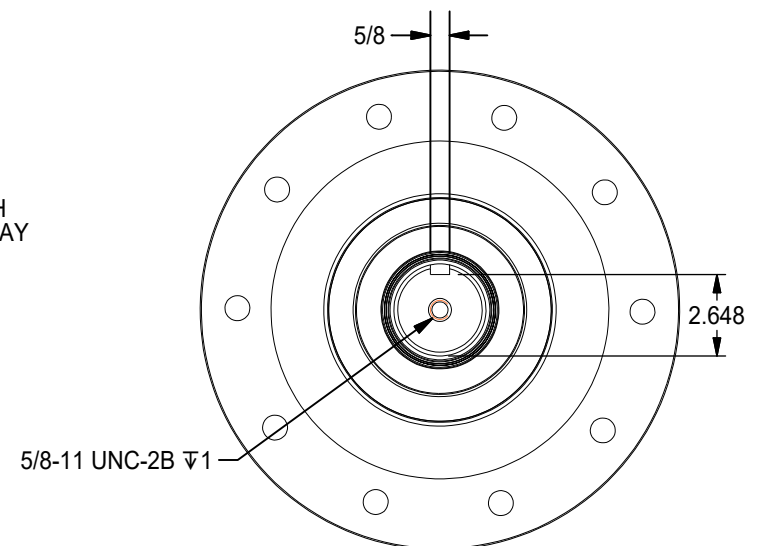
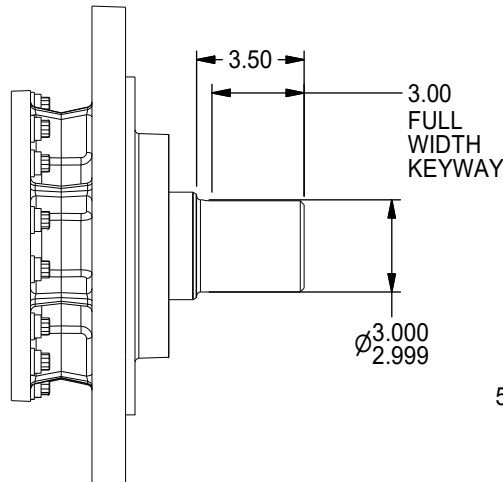
### D1 Output Shaft 23T 8/16 DP Spline

AVAILABLE OPTIONS:  
Splined Hub: P/N 81-004-2172  
Retainer Kit: P/N 81-018-0741

See Hubs & Pinions technical  
data sheet for details



### D2 Output Shaft Ø3.00 With 5/8" Keyway





# 130 GEAR DRIVE - SHAFT OUTPUT

130,000 in-lb (14,688 N-m) Intermittent Rating 65,000 in-lb (7,344 N-m) Continuous Rating  
Typical Applications: Industrial, Marine or Mobile Equipment

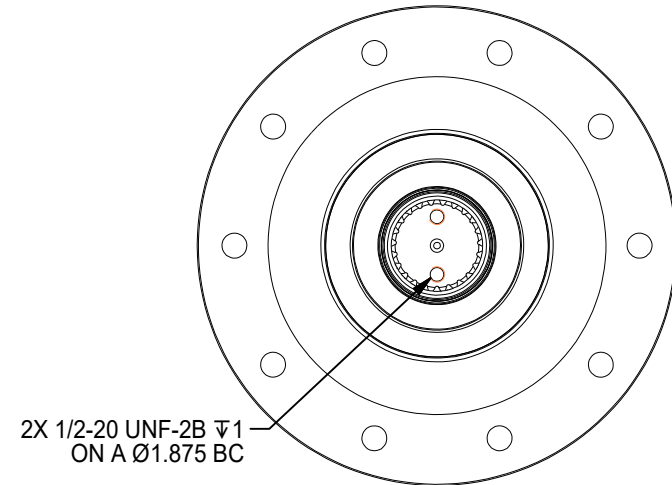
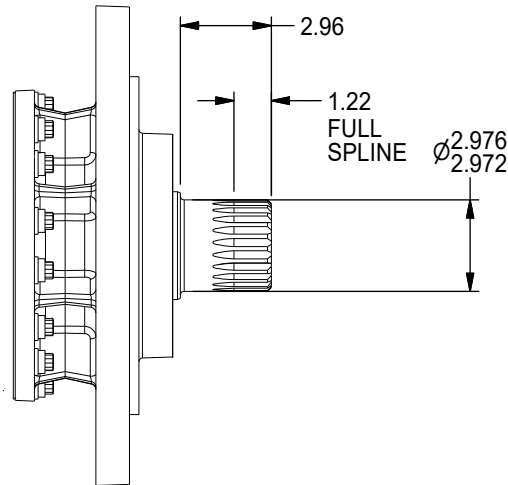
(913) 782-1238 (Tel)  
(913) 782-4206 (Fax)  
Sales@Eskridgeinc.com  
www.Eskridgeinc.com  
FORM: PS130L-AC

SHEET 6 OF 9

## D3 Output Shaft 23T 8/16 DP Spline

AVAILABLE OPTIONS:  
Retainer Kit: P/N 81-018-0741

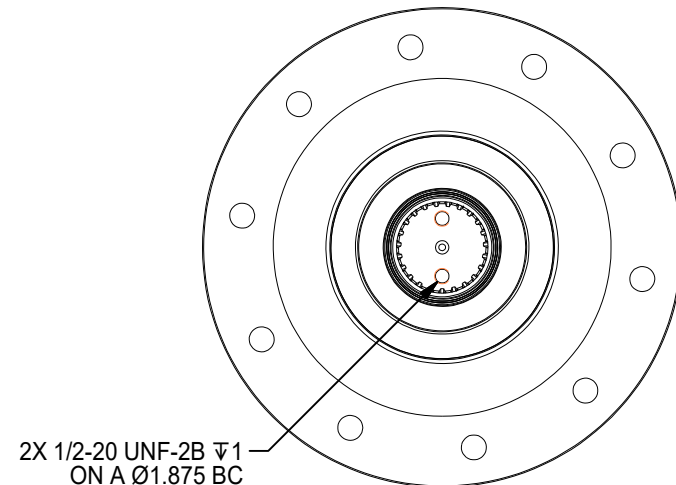
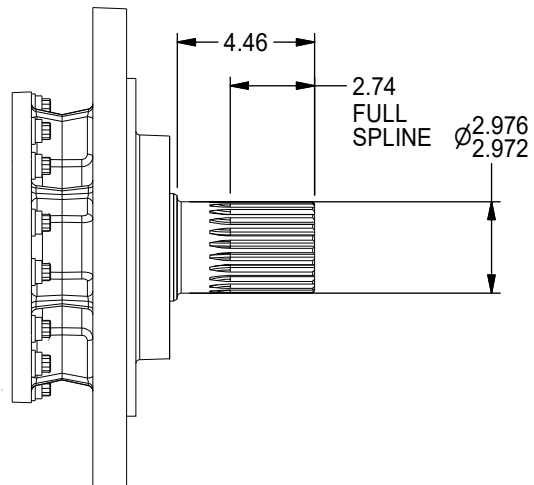
See Hubs & Pinions technical  
data sheet for details



## D4 Output Shaft 23T 8/16 DP Spline

AVAILABLE OPTIONS:  
Retainer Kit: P/N 81-018-0741

See Hubs & Pinions technical  
data sheet for details





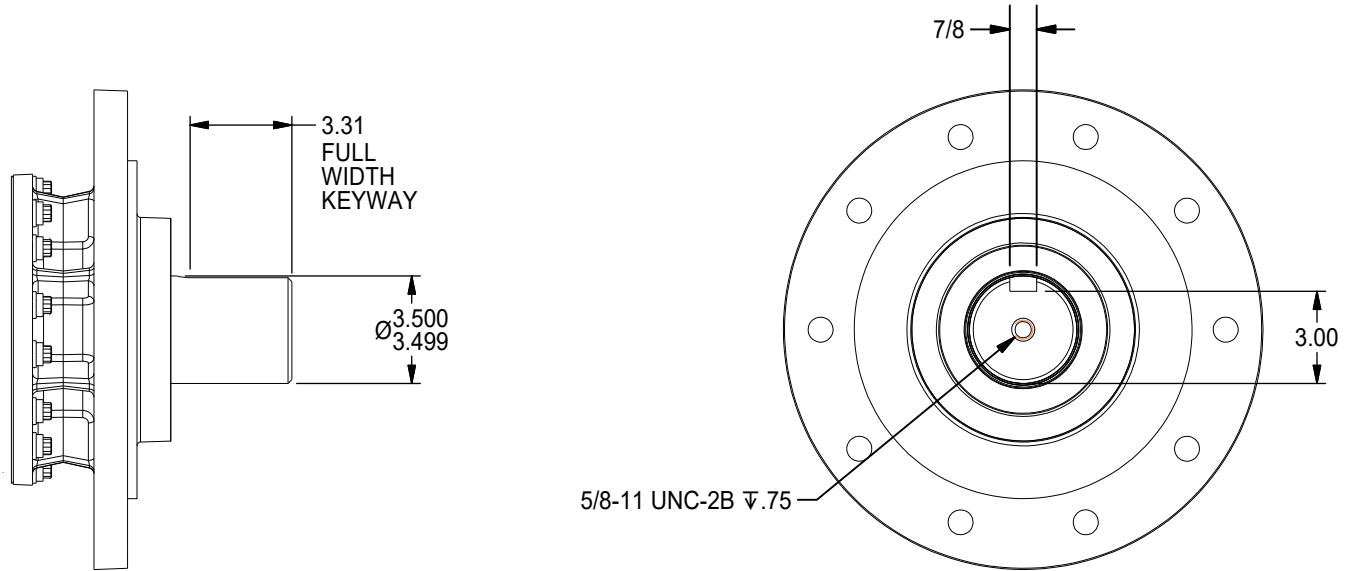
# 130 GEAR DRIVE - SHAFT OUTPUT

130,000 in-lb (14,688 N-m) Intermittent Rating 65,000 in-lb (7,344 N-m) Continuous Rating  
Typical Applications: Industrial, Marine or Mobile Equipment

(913) 782-1238 (Tel)  
(913) 782-4206 (Fax)  
[Sales@Eskridgeinc.com](mailto:Sales@Eskridgeinc.com)  
[www.Eskridgeinc.com](http://www.Eskridgeinc.com)  
FORM: PS130L-AC

SHEET 7 OF 9

**D5 Output Shaft  
Ø3.50 With 7/8"  
Keyway**





# 130 GEAR DRIVE - SHAFT OUTPUT

130,000 in-lb (14,688 N-m) Intermittent Rating 65,000 in-lb (7,344 N-m) Continuous Rating  
 Typical Applications: Industrial, Marine or Mobile Equipment

(913) 782-1238 (Tel)  
 (913) 782-4206 (Fax)  
[Sales@Eskridgeinc.com](mailto:Sales@Eskridgeinc.com)  
[www.Eskridgeinc.com](http://www.Eskridgeinc.com)  
 FORM: PS130L-AC

## Performance Ratings

Maximum Intermittent Output Torque:	130,000 in-lb (14,688 N-m)
Continuous Output Torque:	65,000 in-lb (7,344 N-m)
Maximum Input Speed:	3,000 RPM
Maximum Operating Ambient Temperature:	110° F (43° C)
Minimum Operating Ambient Temperature:	-20° F (-28° C)

*Above ratings are general, mechanical ratings, not thermal ratings.  
 Continuous duty may require additional cooling.  
 Consult your Eskridge representative to determine ratings for your specific application or configuration.*

## Motor Mount Dimensions

PILOT DIMENSIONS

BOLT CIRCLE

*SAE 'A' Ø3.251/3.253	4X 1/2-13 UNC-2B ∇5/8 ON Ø4.188 B.C.
*SAE 'B' Ø4.001/4.005	2X 1/2-13 UNC-2B ∇.50 ON Ø5.750 B.C.
SAE 'C' Ø5.001/5.004	4X 1/2-13 UNC-2B ∇1 ON Ø6.375 B.C. 2X 5/8-11 UNC-2B ∇1 ON Ø7.125 B.C.
SAE 'D' Ø6.000/6.004	4X 3/4-10 UNC-2B ∇1 ON Ø9.000 BC

## Approximate Unit Weights (lbs)

Gear Drive Mounting	Stages		
	Single Planetary	Double Planetary	Triple Planetary
A	189	200	218
B	157	168	186
E	164	175	193
F	140	150	168
C	Consult Eskridge		

## NOTES: ▷

- SPECIFICATION CALLED OUT IN MOTOR MOUNT DIMENSIONS SECTION.
- VALUES ARE SHOWN IN INCHES.
- OUTPUT SHAFT ROTATION SAME AS INPUT ROTATION.
- ONLY AVAILABLE WITH SINGLE STAGE GEAR BOXES.

## Oil Capacities

Position	Quantity		
	Single Planetary	Double Planetary	Triple Planetary
Vertical Shaft Down	5.0 pts Fill to: 1.5" From Port 'A'	5.0 pts Fill to: 1.5" From Port 'A'	6.9 pts Fill to: 1.5" From Port 'A'
Vertical Shaft Up	5.0 pts Fill to: Port 'B'	5.0 pts Fill to: Port 'B'	6.9 pts Fill to: Port 'B'
Horizontal	3.0 pts Fill to: Port 'A'	3.0 pts Fill to: Port 'A'	4.1 pts Fill to: Port 'A'

Units shipped without oil  
 Use EP or API GL5 Designated Lubricants

## Dimension 'A' Specifications

Input Spline Code	Ratio	Standard Input Mounting			
		SAE 'A'	SAE 'B'	SAE 'C'	SAE 'D'
2,3,5	4, 6, 19, 26, 36	1.22	1.17	1.47	-
4	4, 6, 19, 26	1.47	1.47	1.47	-
4	36	2.72	2.27	2.72	-
ALL	33, 45	2.72	2.27	2.27	-
7, 9	4, 6	-	-	-	1.69

## Dimension 'B' Specifications

Gear Drive Mount	Output Shaft Code				
	D1	D2	D3	D4	D5
A	5.80	5.80	4.62	6.12	5.34
B	6.15	6.15	4.96	6.46	5.68
E	5.80	5.80	4.62	6.12	5.34
F	6.40	6.40	5.21	6.71	5.93
C	Custom Shaft: Consult Eskridge				





# 130 GEAR DRIVE - SHAFT OUTPUT

130,000 in-lb (14,688 N-m) Intermittent Rating 65,000 in-lb (7,344 N-m) Continuous Rating  
 Typical Applications: Industrial, Marine or Mobile Equipment

(913) 782-1238 (Tel)  
 (913) 782-4206 (Fax)  
[Sales@Eskridgeinc.com](mailto:Sales@Eskridgeinc.com)  
[www.Eskridgeinc.com](http://www.Eskridgeinc.com)  
 FORM: PS130L-AC

## Ordering Information

Example Part Number: 130LAD1A2-19-Z

MODEL	SHAFT RETENTION	GEAR DRIVE MOUNTING	OUTPUT SHAFT	INPUT MOUNTING	INPUT SPLINE	RATIO	OPTIONS
130	L	A	D1	A	2	19	Z
	L- Load-N-Lock Patented Shaft Retention System  See Shaft Retention Technical Bulletin for details	A - Round AQ - A w/Quick Eccentric B - Square E - Rectangular EQ - E w/Quick Eccentric F - Flangless C - Custom	D1 - 23T 8/16 DP Spline X 2.25" Long D2 - Ø3.00" X 5/8" Key D3 - 23T 8/16 DP Spline X 1.22" Long D4 - 23T 8/16DP Spline X 2.72" Long D5 - Ø3.50 , 7/8" Key C1 - Custom Shaft	A - SAE "A" (2 & Modified 4 Bolt) B - SAE "B" (2 or 4 Bolt) C - SAE "C" (2 & 4 Bolt) D - SAE "D" (4 Bolt) (single-stage only)	2 - 13T 16/32 DP 3 - SAE 1"-6B 4 - 14T 12/24 DP 5 - 15T 16-32 DP 7 - 17T 12/24 DP ('D' Mount Only) 9 - 13T 8/16 DP ('D' Mount Only)	Single Stage Ratios 4 - 4.42:1 6 - 6.00:1  Double Stage Ratios: 19 - 19.54:1 26 - 26.52:1 33 - 33.15:1 36 - 36.00:1 45 - 45.00:1  Triple Stage Ratios 86 - 86.35:1 117 - 117.21:1 147 - 146.52:1 159 - 159.12:1 199 - 198.90:1 216 - 216.00:1 270 - 270.00:1	Z - Grease Zerk (Required for pinion up applications) R - Rotated Cover