

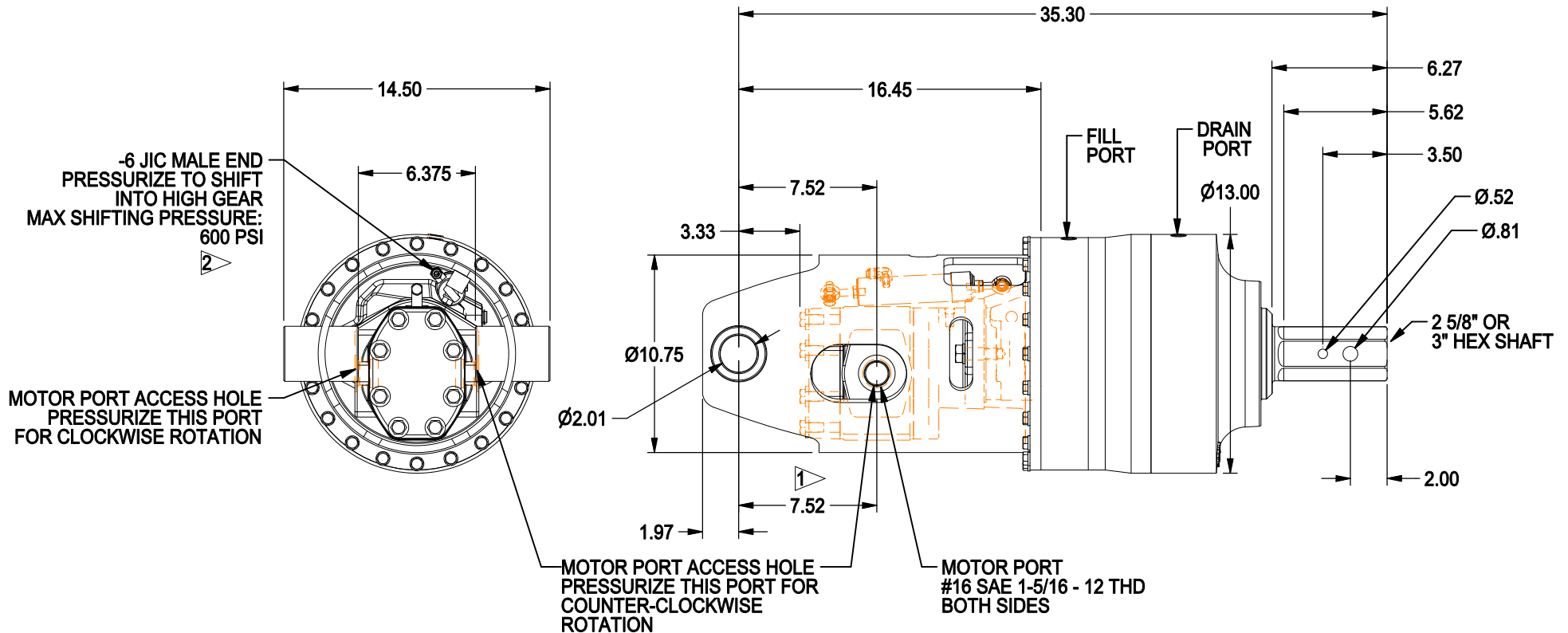


34 SERIES DRIVE HEAD

14,00 Ft-lb (18,980 N-m) Maximum
Typical Applications: Utility and Construction Industries

(913) 782-1238 (Tel)
(913) 782-4206 (Fax)
Sales@Eskridgeinc.com
www.Eskridgeinc.com
FORM: PS 34-AB

Page 1 of 2



NOTES: ▷

1. SUBJECT TO CHANGE WITH DIFFERENT MOTORS.
2. DRIVE HEAD MUST BE AT A COMPLETE STOP BEFORE APPLYING PRESSURE TO SHIFT TO HIGH SPEED OR RELEASE PRESSURE TO SHIFT BACK TO LOW SPEED. SHIFTING ON THE FLY WILL CAUSE DAMAGE TO INTERNAL COMPONENTS.
3. VALUES ARE SHOWN IN INCHES.



34 SERIES DRIVE HEAD

14,00 Ft-lb (18,980 N-m) Maximum
 Typical Applications: Utility and Construction Industries

(913) 782-1238 (Tel)
 (913) 782-4206 (Fax)
 Sales@Eskridgeinc.com
 www.Eskridgeinc.com
 FORM: PS 34-AB

Page 2 of 3

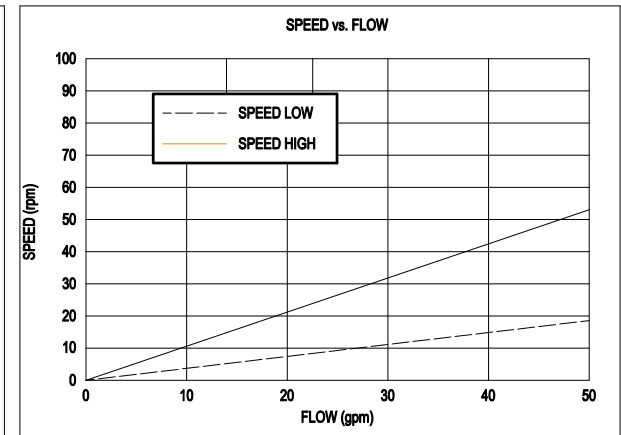
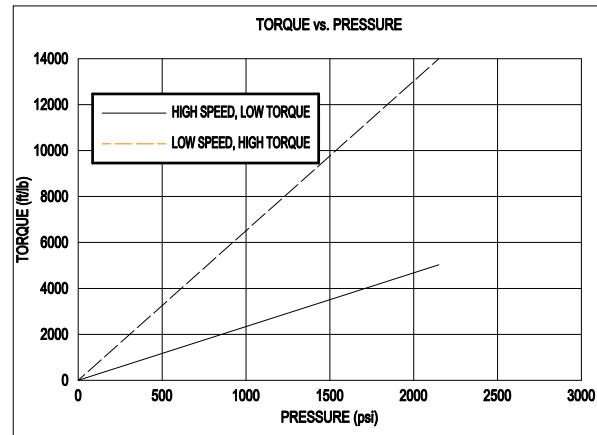
Performance Ratings

Maximum Intermittent Output Torque: 14,000 ft-lb (19,000 N-m)
 Shaft Pressure Load: 30,000 lb (13,638 kg)
 Shaft Pullout Load: 30,000 lb (13,638 kg)
 *Shaft Side loading Not Recommended
 Maximum Operating Ambient Temperature: 110°F (43°C)
 Minimum Operating Ambient Temperature: -20°F (-28°C)

Consult your Eskridge representative to determine ratings for your specific application or configuration

Motor Mount Dimensions

PILOT DIMENSIONS	BOLT CIRCLE
SAE 'C' Ø5.002/5.005	2X 5/8-11 UNC-2B ∇ 1 ON Ø7.125 BC



- * Starting torques are approximately 25% less than running torque.
- * System back pressure will reduce running torque proportionally.
- * System back pressure should be limited to 100 PSI.
- * Consult Eskridge representative for torque and speed charts for specific application.

Approximate Unit Weight: 460 lb. With Motor

Motor Specifications:

Single Speed Hydraulic Gear Type Motor
 Maximum System Pressure: 2,150 psi (148 bar)

Oil Capacity: 10 pts. (4.73 L)

Use EP or API GL-5 Designated Lubricants

Ordering Information
 Example Part Number: 34BA32F94S

MODEL	OUTPUT SHAFT	BAIL BOSS	MOTOR SUPPLIER	MOTOR PART NUMBER	OPTIONS
34BA	3	2	F	94	S
	3 - 3" HEX 6 - 2 5/8" HEX	1 - Ø1 2 - Ø1 1/4	F - FACTORY U - USER	FOR OTHER MOTOR OPTIONS CONSULT FACTORY	S - SINGLE-ACTING HYDRAULIC CYLINDER H - SINGLE-ACTING, HEAVY-DUTY HYDRAULIC CYLINDER