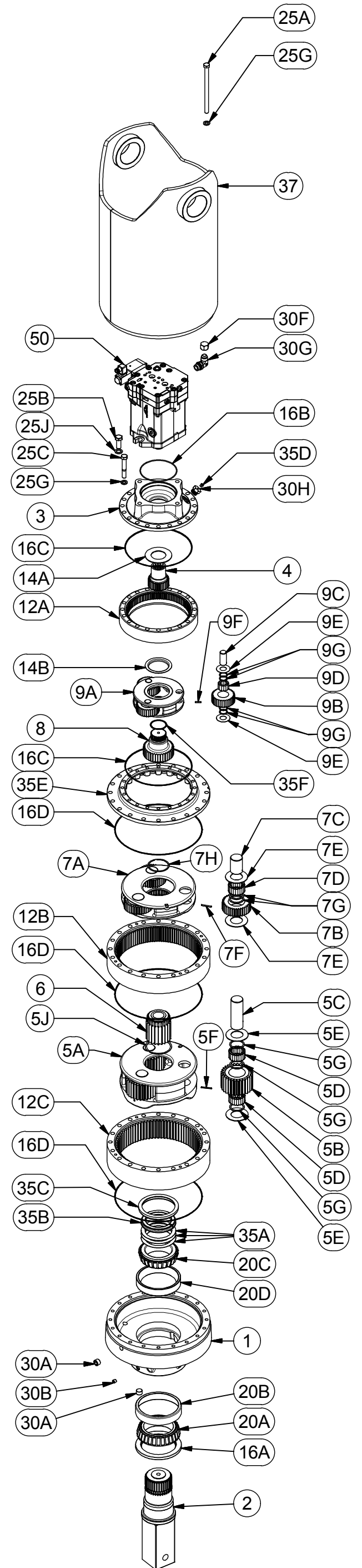




**STANDARD**

44081-44F136D9  
EFFECTIVE FROM: SN-159255 05-09-17

| PARTS LIST |      |     |             |                                 |
|------------|------|-----|-------------|---------------------------------|
| GROUP      | ITEM | QTY | PART NUMBER | DESCRIPTION                     |
|            | 1    | 1   | 42-004-3022 | BASE                            |
|            | 2    | 1   | 42-004-4102 | D440 SHAFT                      |
|            | 3    | 1   | 25-004-1232 | COVER-'D' 4-BOLT (250/252)      |
|            | 4    | 1   | 25-004-1762 | INPUT GEAR                      |
| 5          |      | (1) | 42-005-0131 | CARRIER ASSY-SEC (440/4.77:1)   |
|            | 5A   | 1   | 42-004-1402 | CARRIER SEC                     |
|            | 5B   | 3   | 42-004-1092 | PLANET GEAR - SEC               |
|            | 5C   | 3   | 42-004-1332 | PLANET SHAFT - SEC (440)        |
|            | 5D   | 120 | 01-106-0040 | PLANET ROLLER                   |
|            | 5E   | 6   | 42-004-1362 | THRUST WASHER                   |
|            | 5F   | 3   | 01-153-0220 | ROLL PIN (3/16X1-3/4)           |
|            | 5G   | 9   | 42-004-1352 | SPACER - LOOSE ROLLER 440       |
|            | 5J   | 1   | 01-160-0680 | RETAINING RING (SMALLEY VS-412) |
|            | 6    | 1   | 42-004-1472 | SUN GEAR                        |
| 7          |      | (1) | 42-005-0101 | CARRIER ASSY-PRI (440/3.95:1)   |
|            | 7A   | 1   | 42-004-1062 | PRI CARRIER                     |
|            | 7B   | 3   | 42-004-1102 | PLANET GEAR-PRI                 |
|            | 7C   | 3   | 42-004-1342 | PLANET SHAFT - PRI (440)        |
|            | 7D   | 60  | 01-106-0040 | PLANET ROLLER                   |
|            | 7E   | 6   | 42-004-1362 | THRUST WASHER                   |
|            | 7F   | 3   | 01-153-0220 | ROLL PIN (3/16X1-3/4)           |
|            | 7G   | 6   | 42-004-1352 | SPACER - LOOSE ROLLER 440       |
|            | 7H   | 1   | 01-160-0690 | RETAINING RING                  |
|            | 8    | 1   | 42-004-1512 | SUN GEAR                        |
| 9          |      | (1) | 25-005-2201 | CARRIER ASSY                    |
|            | 9A   | 1   | 25-004-1692 | PRIMARY CARRIER                 |
|            | 9B   | 3   | 25-004-1712 | PLANET GEAR - PRI               |
|            | 9C   | 3   | 25-004-1442 | PLANET SHAFT (PRI)              |
|            | 9D   | 36  | 01-106-0010 | ROLLER                          |
|            | 9E   | 6   | 13-004-1582 | THRUST WASHER - PLANET          |
|            | 9F   | 3   | 01-153-0020 | ROLL PIN                        |
|            | 9G   | 12  | 13-004-1592 | SPACER                          |
| 12         | -    | -   | -           | RING GEARS                      |
|            | 12A  | 1   | 25-004-1562 | RING GEAR PRIMARY               |
|            | 12B  | 1   | 42-004-1042 | RING GEAR - PRI (440)           |
|            | 12C  | 1   | 42-004-1032 | RING GEAR - SEC (440)           |
| 14         | -    | -   | -           | THRUST WASHERS & BEARINGS       |
|            | 14A  | 1   | 25-004-1752 | WASHER - INPUT THRUST - 254     |
|            | 14B  | 1   | 25-004-1132 | CARRIER THRUST WASHER           |
| 16         | -    | (1) | 42-016-2043 | SEAL KIT                        |
|            | 16A  | 1   | 01-405-0770 | SEAL                            |
|            | 16B  | 1   | 01-402-0890 | O-RING                          |
|            | 16C  | 2   | 01-402-0020 | O-RING (PARKER#276)             |
|            | 16D  | 3   | 01-402-0840 | O-RING (PARKER #280)            |
| 20         | -    | -   | -           | OUTPUT SHAFT BEARINGS           |
|            | 20A  | 1   | 01-102-0290 | BEARING CONE                    |
|            | 20B  | 1   | 01-103-0290 | BEARING CUP                     |
|            | 20C  | 1   | 01-102-0280 | BEARING CONE                    |
|            | 20D  | 1   | 01-103-0280 | BEARING CUP                     |
| 25         | -    | -   | -           | HARDWARE                        |
|            | 25A  | 20  | 01-150-1950 | HHCS 5/8-11 X 9.5               |
|            | 25B  | 2   | 01-150-1890 | HHCS (3/4-10 UNC 1.75" GR5)     |
|            | 25C  | 20  | 01-150-1880 | HHCS 5/8-11 X 4                 |
|            | 25G  | 40  | 01-166-0040 | LOCKWASHER - 5/8 ZINC PLATED    |
|            | 25J  | 2   | 01-166-0350 | HARDWASHER - 3/4; 1.25 O.D.     |
| 30         | -    | -   | -           | PLUGS & FITTINGS                |
|            | 30A  | 3   | 01-207-0100 | PIPE PLUG 3/4 NPT MAGNETIC      |
|            | 30B  | 1   | 01-207-0020 | PIPE PLUG (1/4 NPT- HOLLOW HEX) |
|            | 30F  | 1   | 01-201-0760 | CAP                             |
|            | 30G  | 1   | 01-201-0792 | FITTING                         |
|            | 30H  | 1   | 01-201-0520 | ADAPTOR SAE-12-1/8 NPT          |
| 35         | -    | -   | -           | MISCELLANEOUS                   |
|            | 35A  | *   | 42-004-1202 | SHIM - OUTPUT SHAFT (440)       |
|            | 35B  | 1   | 42-004-1222 | SPLIT RING                      |
|            | 35C  | 1   | 42-004-1212 | LOCK RING (440)                 |
|            | 35D  | 1   | 01-216-0020 | RELIEF VALVE                    |
|            | 35E  | 1   | 42-004-2072 | RING ADAPTER                    |
|            | 35F  | 1   | 01-160-0740 | RETAINING RING                  |
|            | 37   | 1   | 42-005-0171 | 440 BAIL ASSEMBLY w/3" PIN      |
|            | 50   | 1   | 01-304-1360 | MOTOR                           |



\*QUANTITY DEPENDANT UPON DESIRED BEARING PRELOAD  
X44081-44F136D9 ECN: - REV: A 05-08-17 HWP