



Model 92B

| Item | Qty | Part No. | Description |
|------|-----|-------------|------------------------------------|
| 1 | 1 | 92-004-1004 | CASE |
| 2 | 1 | 92-004-'A' | COVER |
| 3 | 1 | 92-004-1042 | PISTON |
| 4 | 1 | 92-004-'B' | SHAFT |
| 5 | * | 90-004-1031 | SPACER |
| 6 | 1 | 01-100-0240 | BEARING |
| 7 | 1 | 01-112-0310 | THRUST RACE |
| 8 | 4 | 01-150-1040 | 12 POINT CAP SCR.(1/2-13 X 1) |
| 9 | 1 | 01-208-0020 | HOL. HEX. PLUG |
| 10 | * | 01-261-'C' | SPRING |
| 11 | * | 90-004-1742 | FRICION DISC (BRONZE) |
| 12 | * | 01-288-0010 | FRICION DISC (PAPER) |
| 13 | * | 01-288-0020 | SEPARATOR PLATE |
| 14 | 1 | 01-402-0640 | O-RING |
| 15 | 1 | 01-402-0630 | O-RING |
| 16 | 1 | 01-402-0650 | O-RING |
| 17 | 1 | 01-405-0570 | SEAL |
| 18 | - | - | - |
| 19 | 1 | 01-402-0220 | O-RING -OUTPUT PILOT |
| 20 | 1 | 90-004-'E' | MOTOR GASKET OR O-RING (NOT SHOWN) |

| A | COVER | PART NO. |
|---|----------------------|-------------|
| | SAE 'A' 2/MOD 4 BOLT | 92-004-1103 |
| | SAE 'B' 2 BOLT | 92-004-1113 |

| B | SHAFT IN/OUT | PART NO. |
|---|--------------|-------------|
| | 13T/13T | 92-004-1053 |
| | 6B/13T | 92-004-1063 |
| | 6B/6B | 92-004-1073 |
| | 13T/6B | 92-004-1083 |

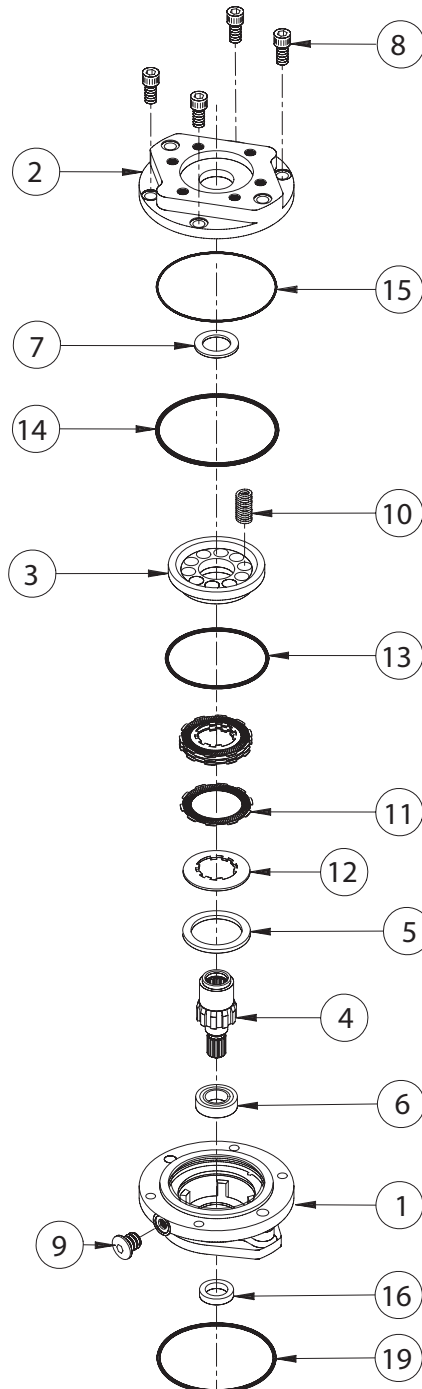
| C | SPRING COLOR | PART NO. |
|---|--------------|-------------|
| | RED | 01-261-0310 |
| | GOLD | 01-261-0300 |
| | GREEN | 01-261-0290 |

| E | MOTOR GASKET | PART NO. |
|---|----------------------|-------------|
| | SAE 'A' 2/MOD 4 BOLT | 90-004-1061 |
| | SAE 'B' 2 BOLT | 01-402-0820 |

| OPTIONAL KITS | PART NO. | ITEMS INCLUDED |
|---------------------------|-------------|------------------------------|
| SEAL KIT | 92-016-2011 | 13,14,15,16,19 AND 20 (BOTH) |
| FRICION DISC KIT PAPER | 92-016-1981 | 11 |
| FRICION DISC KIT BRONZE | 92-016-2021 | 11 |
| SEPARATOR PLATE KIT | 92-016-1991 | 12 |
| MASTER REBUILD KIT PAPER | 92-015-2051 | 6,7,SEAL & FRICTION KITS |
| MASTER REBUILD KIT BRONZE | 92-015-2061 | 6,7,SEAL & FRICTION KITS |

1 TOTAL QTY OF SEPARATORS (ITEM 12) AND SPACERS (ITEM 5) MUST EQUAL 3.
 QTY OF FRICTION DISCS (ITEM 11)= QTY OF SEPARATORS (ITEM 12) PLUS 1.
 FULL COMPLEMENT BRAKE INCLUDES 4 FRICTION DISCS (ITEM 11), 3 SEPARATORS (ITEM 12), AND 0 SPACERS (ITEM 5).

2 QTY OF SPRINGS (2,3,4,5,6,8 OR 10) IS DETERMINED BY SPECIFIC BRAKE REQUIREMENTS.



ECN 2580
 X92B-AC DATE 11-06-06