

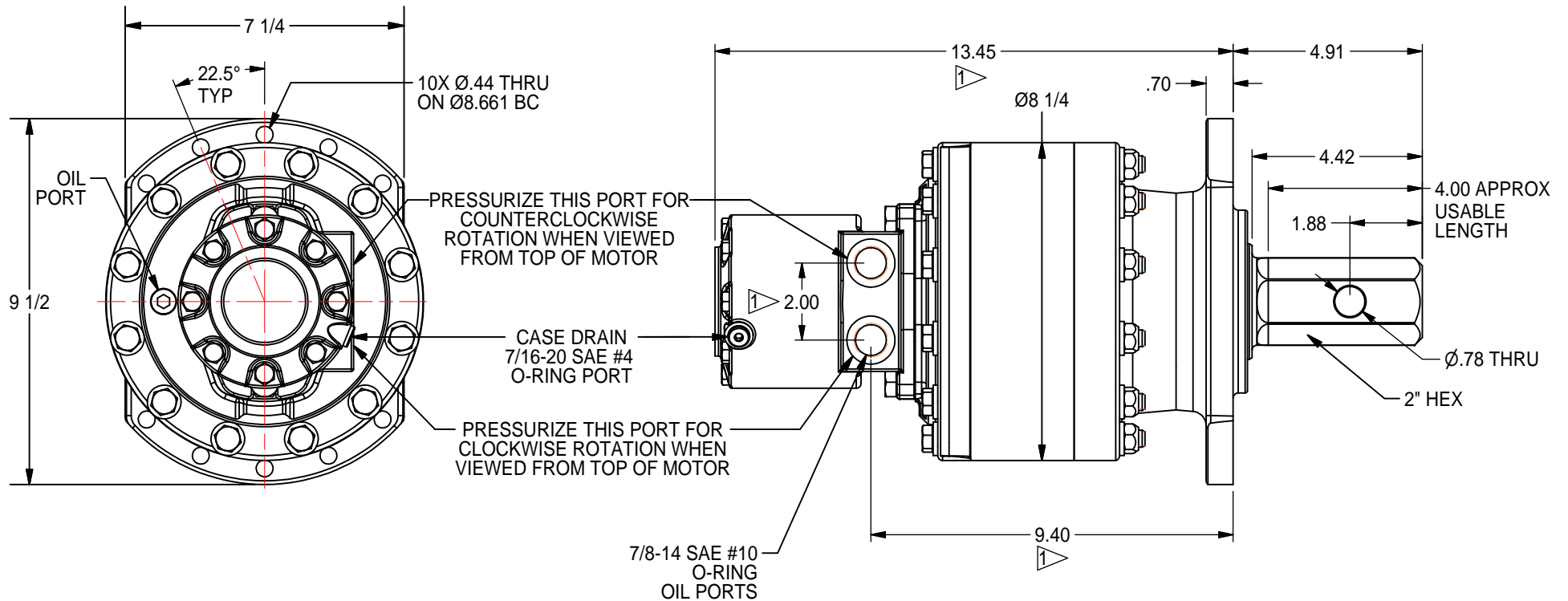


# 50 SERIES LIGHTWEIGHT DRIVE HEAD

5,000 ft-lb (6,780 N-m) to 7,000 ft-lb (9,491 N-m) Maximum  
Typical Applications: Utility and Construction Industries

(913) 782-1238 (Tel)  
(913) 782-4206 (Fax)  
Sales@Eskridgeinc.com  
www.Eskridgeinc.com  
FORM: PS D50LW-B

Page 1 of 3



## NOTES: ▷

1. SUBJECT TO CHANGE WITH DIFFERENT MOTORS.
2. VALUES ARE SHOWN IN INCHES.



# 50 SERIES LIGHTWEIGHT DRIVE HEAD

5,000 ft-lb (6,780 N-m) to 7,000 ft-lb (9,491 N-m) Maximum  
 Typical Applications: Utility and Construction Industries

(913) 782-1238 (Tel)  
 (913) 782-4206 (Fax)  
[Sales@Eskridgeinc.com](mailto:Sales@Eskridgeinc.com)  
[www.Eskridgeinc.com](http://www.Eskridgeinc.com)  
 FORM: PS D50LW-B

## Performance Ratings

Maximum Intermittent Output Torque: 5,000 ft-lb (6,780 N-m) to 7,000 ft-lb (9,491 N-m)  
 Shaft Pressure Load: 15,000 lb (6,800 kg)  
 Shaft Pullout Load: 10,000 lb (4,540 kg)  
 \*Shaft Side loading Not Recommended  
 Maximum Input Speed: 3,000 RPM  
 Maximum Operating Ambient Temperature: 110°F (43°C)  
 Minimum Operating Ambient Temperature: -20°F (-28°C)

*Consult your Eskridge representative to determine ratings for your specific application or configuration*

## Oil Capacities

5025	5425
2.25 PINTS	2.00 PINTS
1.06 LITERS	.95 LITERS

ALL UNITS WITH MOTORS SHIPPED WITH OIL  
 Use EP or API GL-5 Designated Lubricants

Ordering Information  
 Example Part Number: 5025-13F134

## Motor Mount Dimensions

PILOT DIMENSIONS	BOLT CIRCLE
SAE 'A' Ø3.251/3.255 $\nabla$ .32	2X 1/2-13 UNC-2B $\nabla$ 5/8 ON Ø4.188 BC

## Motor Specifications:

Single Speed Hydraulic Vane Motors  
 Maximum System Pressure: 3250 psi (225 bar)  
 Maximum Differential Pressure: 2500 psi (170 bar) Continuous  
 3000 psi (210 bar) Intermittent  
 Motors are Internally Drained and Generally Don't Require a Case Drain. If Back Pressure Exceeds 1000 psi a Case Drain is Required.

## Approximate Unit Weight

With Motor: 80-85 lbs (36-39 kg)

MODEL	OUTPUT SHAFT	MOUNT	MOTOR SUPPLIER	MOTOR PART NUMBER
5025	1	3	F	134
5025- 25:1 REDUCTION	1- 2" HEX	3- FLANGE MOUNT	F- FACTORY U- USER	134- 7.1 CU. IN. 135- 10.6 CU. IN.
5425- 25:1 REDUCTION				



# 50 SERIES LIGHTWEIGHT DRIVE HEAD

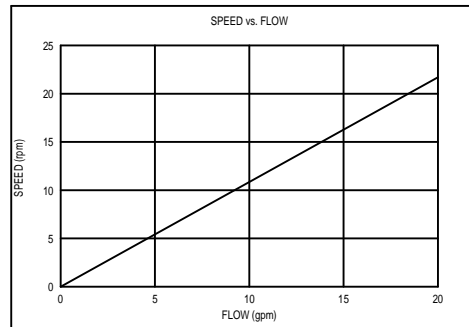
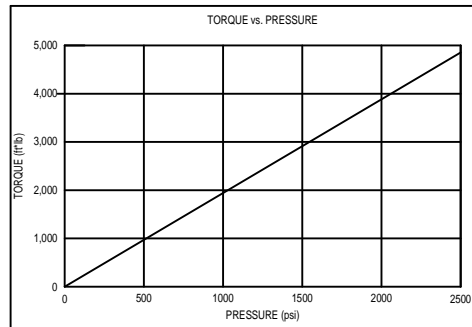
5,000 ft-lb (6,780 N-m) to 7,000 ft-lb (9,491 N-m) Maximum  
Typical Applications: Utility and Construction Industries

(913) 782-1238 (Tel)  
(913) 782-4206 (Fax)  
[Sales@Eskridgeinc.com](mailto:Sales@Eskridgeinc.com)  
[www.Eskridgeinc.com](http://www.Eskridgeinc.com)  
FORM: PS D50LW-B

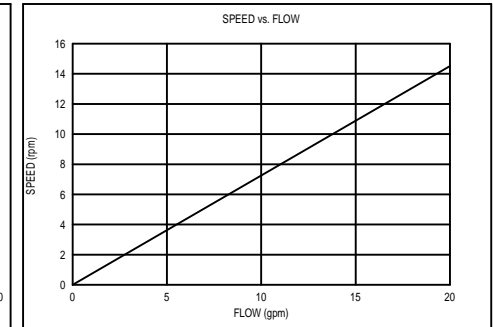
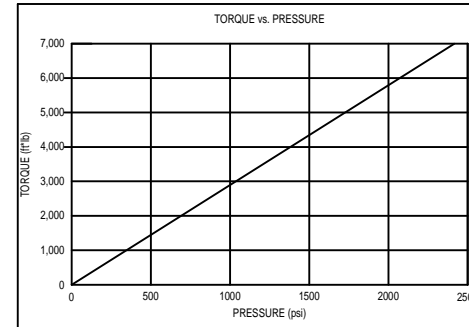
Page 3 of 3

## Torque and Speed Charts:

5025-13F134



5425-13F135



### NOTES:

- \* Starting torques are approximately 10% less than running torque.
- \* Torque and speed charts are based on analytical calculations that use average gearbox and motor efficiencies.
- \* System back pressure will reduce running torque proportionally.
- \* Consult Eskridge Representative for Torque and Speed Charts for your specific application.

**ESKRIDGE, INC. EXPRESSLY DISCLAIMS ANY IMPLIED WARRANTY OF MERCHANTABILITY OR FITNESS FOR ANY PARTICULAR PURPOSE FOR THE PRODUCTS SHOWN HEREIN.**

Any claims based on or related to the products shown herein will be satisfied only by repair or replacement in Eskridge, Inc.'s sole discretion to the extent covered by Eskridge's Product Warranty. Eskridge, Inc. is not liable for incidental or consequential damage of any kind or nature that relate in any way to the products shown herein. For complete warranty information, please refer to Eskridge, Inc.'s Product Warranty that applies to the products shown herein and is incorporated by this reference as if fully set forth. A copy of Eskridge, Inc.'s Product Warranty can be obtained by writing Eskridge, Inc. at P.O. Box 875, 1900 Kansas City Road, Olathe, Kansas 66061