

105E with Integral Brake Exploded View Drawing

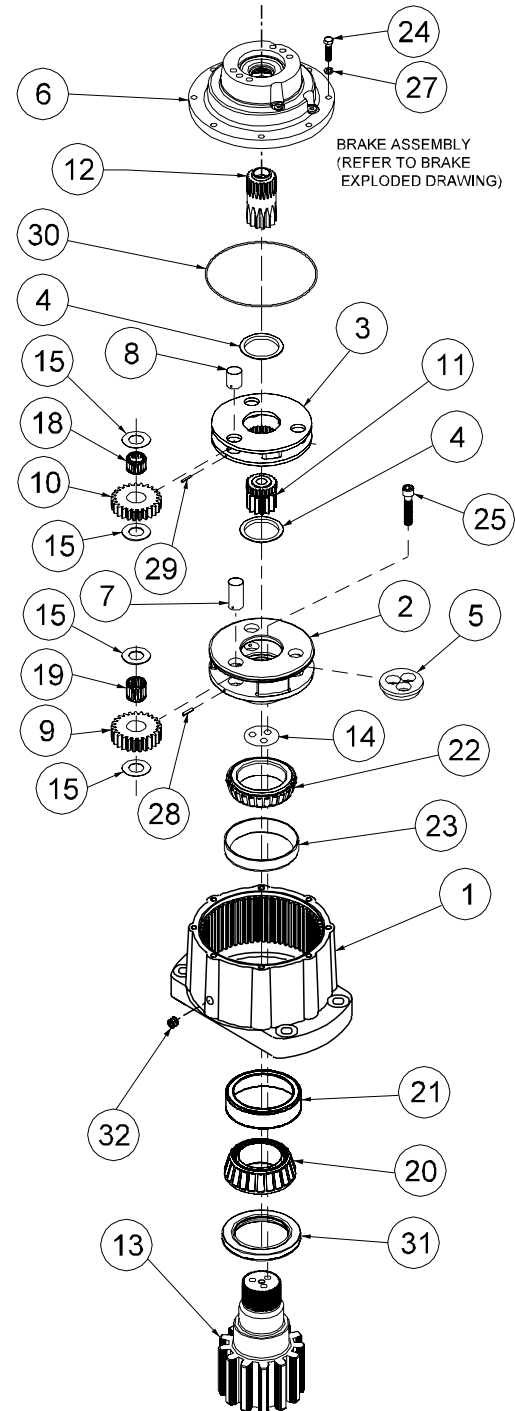


THIS DRAWING IS EFFECTIVE
 FROM: S/N 55013, JUNE 2002
 TO: CURRENT
 REF: X105EIBD2-AA

DOUBLE PLANETARY

RATIO	RATIO
26.52:1	36.00:1
6.00	6.00
4.42	6.00

ITEM	QTY	DESCRIPTION	PART NO.	PART NO.
1	1	CASE-E100 (STD)	86-004-3602	86-004-3602
2	1	CARRIER (SEC)	83-004-1262	83-004-1232
3	1	CARRIER (PRI)	13-004-1032	13-004-1032
4	2	THRUST WASHER-SECONDARY	81-004-2711	81-004-2711
5	1	PLATE- BEARING RETAINER	86-004-1002	86-004-1002
6	1	INTEGRAL BRAKE	(SEE BRAKE EXPLODED DRAWING)	
7	3	PLANET SHAFT (SEC)	83-004-1031	83-004-1031
8	3	PLANET SHAFT (PRI)	13-004-1021	13-004-1021
9	3	PLANET GEAR (SEC)	83-004-1272	83-004-1242
10	3	PLANET GEAR (PRI)	13-004-1112	13-004-1112
11	1	SUN GEAR	83-004-1282	83-004-1252
12	1	INPUT SHAFT-SAE 1"-6B	13-004-9022	13-004-9022
13	1	SHAFT- PER CUSTOMER SPEC	-	-
14	*	SHIMS	83-004-1101	83-004-1101
15	12	THRUST WASHER- PLANET	81-004-1561	81-004-1561
18	3	BEARING - PRI. PL.	01-105-0590	01-105-0590
19	3	BEARING - SEC. PL.	01-105-0500	01-105-0500
20	1	BEARING CONE	01-102-0200	01-102-0200
21	1	BEARING CUP	01-103-0200	01-103-0200
22	1	BEARING CONE	01-102-0100	01-102-0100
23	1	BEARING CUP	01-103-0090	01-103-0090
24	8	H.H.C.S. 3/8-16-1 1/2 GR8	01-150-1670	01-150-1670
25	3	S.H.C.S. 1/2-20 2 1/2 GR8	01-150-1480	01-150-1480
27	8	LOCKWASHER 3/8 MED	01-166-0010	01-166-0010
28	3	ROLL PIN - SEC. PL. 3/16 X 7/8	01-153-0210	01-153-0210
29	3	ROLL PIN - PRI. PL. 1/8 X 7/8	01-153-0180	01-153-0180
30	1	O-RING	01-402-0420	01-402-0420
31	1	SHAFT SEAL	01-405-0660	01-405-0660
32	1	PIPE PLUG 3/8 NPT MAGNETIC	01-207-0070	01-207-0070



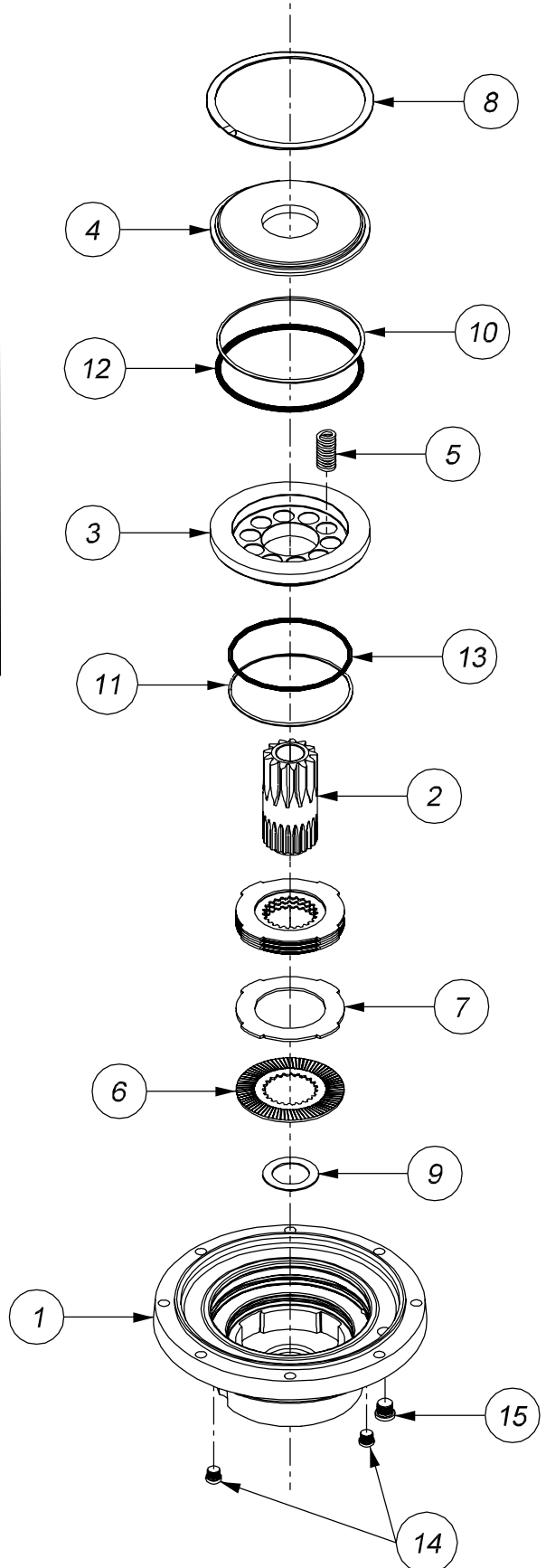
* QUANTITY OF SHIMS DETERMINED BY PRELOAD DESIRED AND PART STACK-UP
 SEAL KIT P/N 86-016-0621 (INCLUDES 1 EACH OF ITEMS 30 & 31).

Integral Brake Exploded View Drawing



THIS DRAWING IS EFFECTIVE
 FROM: S/N 73000, OCT. 2002
 TO: CURRENT
 REF: X10IB-AA

ITEM	QTY	PART NO.	DESCRIPTION
1	1	13-004-9012	CASE - SAE 'A' 2 & 4-BOLT
2	1	(VARIES)	SHAFT (SEE GEARBOX EXPLODED DRAWING)
3	1	13-004-9032	PISTON
4	1	13-004-9042	BACKING PLATE
5	*	01-261-0501	SPRING (3/4 X 1 BLUE)
6	**	01-288-0072	FRICTION DISC (ROTOR)
7	**	01-288-0082	SEPARATOR PLATE (STATOR)
8	1	01-160-0670	RETAINING RING
9	1	01-112-0230	THRUST WASHER
10	1	01-400-0220	BACKUP RING
11	1	01-400-0260	BACKUP RING
12	1	01-402-0690	O-RING
13	1	01-402-0830	O-RING
14	2	01-208-0020	PLUG (SAE #4)
15	1	01-208-0070	PLUG (SAE #6)



NOTES:

- * 1. QTY OF SPRINGS MUST BE 2,4,5,6,8 OR 10 AS DETERMINED BY SPECIFIC BRAKE REQUIREMENTS.
- ** 2. TOTAL QTY OF FRICTION DISCS (ITEM 6) AND SEPARATORS (ITEM 7) MUST EQUAL 8. FULL COMPLEMENT BRAKE INCLUDES 4 FRICTION DISCS (ITEM 6) AND 4 SEPARATORS (ITEM 7).

OPTIONS:

- 1. SEAL KIT, P/N 95-016-2541 (INCLUDES 1 EACH, ITEMS 10,11,12,13)
- 2. FRICTION DISC KIT 95-016-2551 (INCLUDES 4 EACH ITEM 6)
- 3. SEPARATOR PLATE KIT 95-016-2561 (INCLUDES 4 EACH ITEM 7)

>>> NOTE THAT BRAKE IS SHOWN INVERTED (UPSIDE-DOWN) RELATIVE TO EXPLODED DRAWING OF PLANETARY GEARDRIVE.