

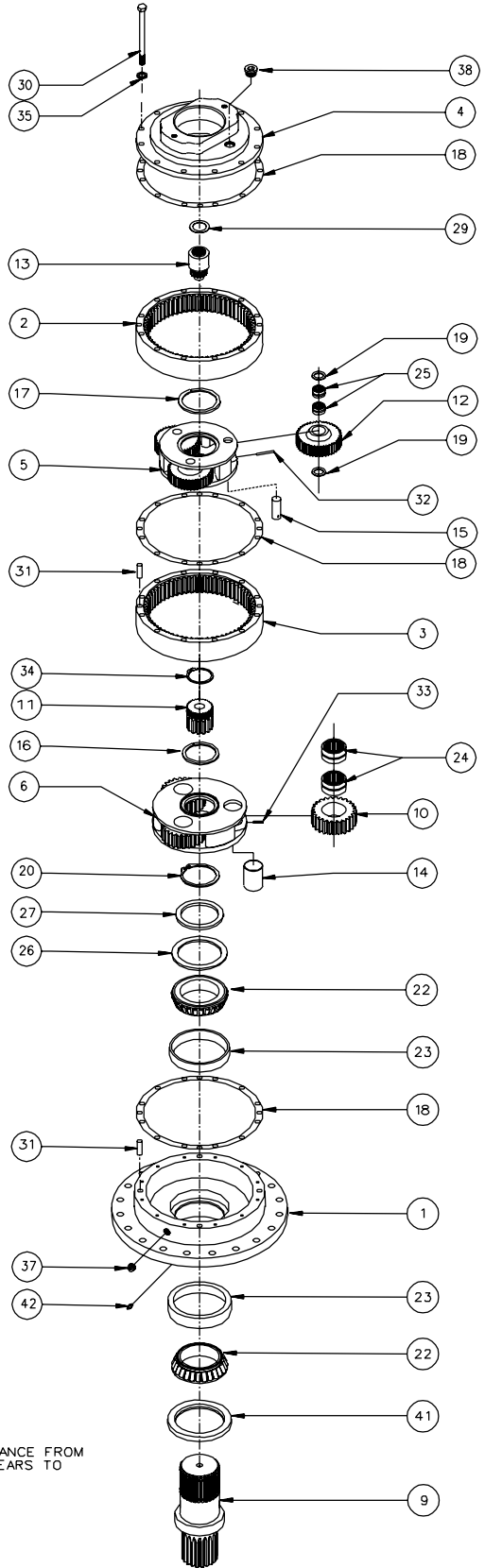


EFFECTIVE DATE: 1-15-85

SERIAL NO. 1911

MODEL 225

1	1	80-004-3013	BASE-A225
2	1	80-004-0832	RING GEAR-PRIMARY
3	1	80-004-0812	RING GEAR-SECONDARY
4	1	-A-	COVER
5	1	-B-	CARRIER-PRIMARY
6	1	80-004-0823	CARRIER-SECONDARY
9	1	-C-	OUTPUT SHAFT
10	3	80-004-1012	PLANET GEAR-SECONDARY
11	1	80-004-1022	SUN GEAR-SECONDARY
12	3	-D-	PLANET GEAR-PRIMARY
13	1	-E-	INPUT GEAR
14	3	80-004-1031	PLANET SHAFT-SECONDARY
15	3	71-004-0121	PLANET SHAFT-PRIMARY
16	1	80-004-1051	THRUST WASHER-SECONDARY
17	1	80-004-1061	THRUST WASHER-PRIMARY
18	3	80-004-1041	GASKET-RING GEAR
19	6	71-004-0861	WASHER-PRIMARY PLANET
20	1	01-160-0420	RETAINING RING - (OUTPUT SHAFT)
22	2	01-102-0120	BEARING CONE - (OUTPUT SHAFT)
23	2	01-103-0110	BEARING CUP - (OUTPUT SHAFT)
24	6	01-105-0430	BEARING-SEC. - (PLANET GEAR)
25	6	01-105-0010	BEARING-PRI. - (PLANET GEAR)
26	*	80-004-1141	SHIM
27	1	80-004-1131	SPACER
29	1	01-112-0230	BRG. THRUST RACE - (INPUT GEAR)
30	12	01-150-1180	HEX.HEAD CS (1/2-13 X 7) GR5
31	6	01-152-0040	DOWEL (1/2 X 1-1/2)
32	3	01-153-0020	ROLL PIN (3/16 X 1)
33	3	01-153-0190	ROLL PIN (3/16 X 1-1/4)
34	1	01-160-0430	RETAINING RING - (SUN)
35	12	01-166-0030	LOCKWASHER-MED.(1/2)
37	1	01-207-0041	PIPE PLUG (1/2 NPT MAGETIC)-(BASE)
38	1	01-208-0030	PLUG -(COVER)
41	1	01-405-0500	SEAL
42	1	01-215-0040	ZERK (1/4 NPT) (OPTIONAL)
ITEM	QTY	PART NO.	DESCRIPTION



SHAFTS - OUTPUT		PART NO.
-C-	OUTPUT SHAFT SPL D1	80-004-4013
	OUTPUT SHAFT KEYED D2	80-004-4062
	CUSTOM SHAFTS C1	---

COVER		PART NO.
-A-	SAE 'A' ASSY ('A'or'M'OPTION) 4 BOLT @ 45°	80-005-1254
	SAE 'A' ASSY ('F'OPTION) 4 BOLT @ 90°	80-005-1264
	SAE 'B' ASSY (2 AND 4 BOLT)	80-005-1274
	SAE 'C' (2 AND 4 BOLT)	80-004-1174 ***

DESCRIPTION		PART NO.	
-B-	CARRIER - PRI	80-004-1093	80-004-1083
-D-	PLANET GEAR PRI	73-004-1032	73-004-1022
-E-	INPUT GEAR 13T 1/2	80-004-1312	80-004-1292
	INPUT GEAR 1"-6B SPL	80-004-1322	80-004-1282
	INPUT GEAR 14T 12/24	73-004-1012	73-004-1002
RATIO →		37.80:1	51.43:1

* QUANTITY OF SHIMS DETERMINED BY BEARING PRELOAD.

** NOT USED WITH 80-004-1174 COVER.

*** HYDRAULIC MOTORS USED WITH THIS COVER MUST HAVE A 2.19" DISTANCE FROM MOUNTING FACE TO END OF SHAFT. CONTACT ESKRIDGE FOR INPUT GEARS TO BE USED WITH OTHER MOTORS.

OPTIONS
SEAL KIT P/N 80-016-2011
INCLUDES 1 EA. OF ITEM 41 AND
A QTY 3 OF ITEM 18

E.C.N. ----
SERV/225x

US

DATE: 03/22/96