



1000 Gear Drive - Spindle Output

Typical Applications: Industrial, Marine or Mobile Equipment

(913) 782-1238 (Tel)
 (913) 782-4206 (Fax)
Sales@EskridgeInc.com
www.EskridgeInc.com
 FORM: PS1000S-AB
 Page 1 of 3

Performance Ratings

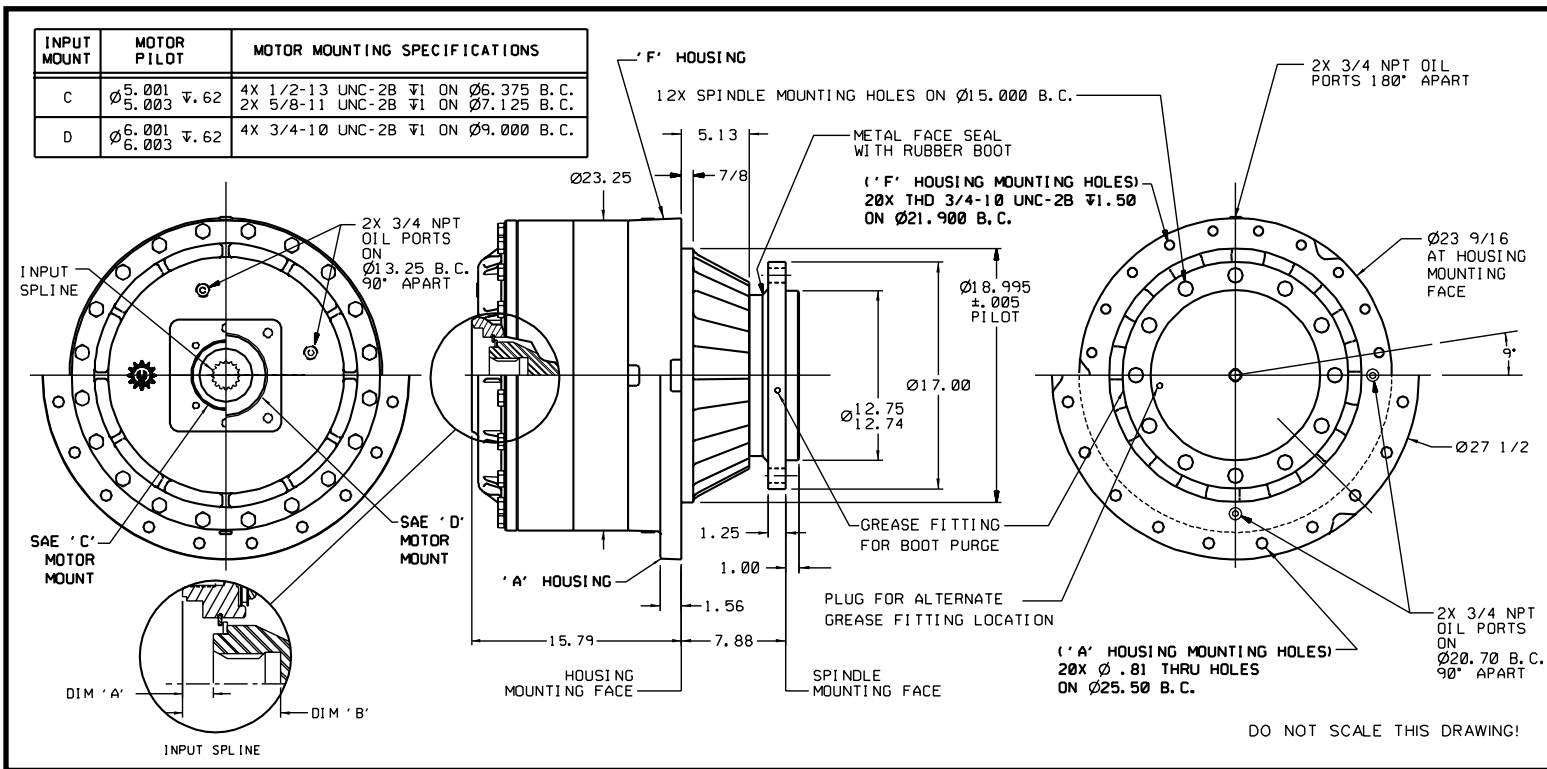
Maximum Intermittent Output Torque	1,000,000 in-lb (113,000 N-m)
Continuous Output Torque	500,000 in-lb (56,500 N-m)
Peak Torque Rating	Consult Eskridge
Maximum Input Speed (No Load)	4,000 RPM

Consult your Eskridge representative to determine ratings for your specific application or configuration.

General Dimensions for Flanged (ordering option 'A') and Flangeless (ordering option 'F') Gear Drive Mountings

Other options may be available. See ordering information on last page or contact your Eskridge representative for more details.

Values are shown as "inches (millimeters)."



Input Spline Data

Dimension "A"

14 T	17T	16T	13T
.94	.94	1.10	1.10
(23.9)	(23.9)	(27.9)	(27.9)

Dimension "B"

14 T	17T	16T	13T
3.00	3.62	3.62	3.00
(76.2)	(91.5)	(91.5)	(76.2)



1000 Gear Drive - Spindle Output

Typical Applications: Industrial, Marine or Mobile Equipment

(913) 782-1238 (Tel)
 (913) 782-4206 (Fax)
Sales@EskridgeInc.com
www.EskridgeInc.com
 FORM: PS1000S-AB
 Page 2 of 3

Approximate Unit Weight

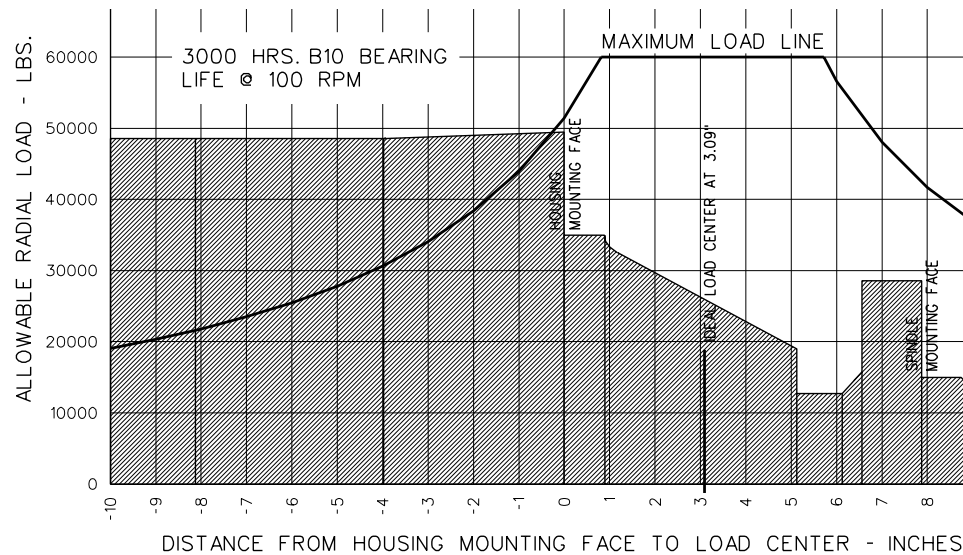
1,350 - 1,425 lbs / 614 - 648 kg

Oil Capacities

Position	Quantity
Vertical	9.50 gal. / 36 L
Horiz.	5.00 gal / 19 L

All units are shipped dry (without oil).

Bearing Curve



To adjust for loads and speeds other than those shown on above curve, use this formula:

$$\text{Adjusted Life (hours)} = 3000 \left(\frac{100\text{rpm}}{\text{Speed(Adjusted)}} \right) \times \left(\frac{\text{Load (Curve)}}{\text{Load (Adjusted)}} \right)^{10/3}$$



1000 Gear Drive - Spindle Output

Typical Applications: Industrial, Marine or Mobile Equipment

(913) 782-1238 (Tel)
 (913) 782-4206 (Fax)
Sales@EskridgeInc.com
www.EskridgeInc.com
 FORM: PS1000S-AB
 Page 3 of 3

Ordering Information

Example Part Number: 1000LAS1D9-76-Z

Model	Shaft Retention	Gear Drive Mounting	Output Spindle	Input Mounting	Input Spline	Ratio	Options
<p>1000 - 1,000,000 in-lb max. intermittent output torque</p>	<p>L - Load-N-Lock™ Patented shaft retention system <i>See shaft retention technical bulletin for details.</i></p>	<p>A - Round Flange Bolt circle: 20 Holes 0.81" on 25.50" dia. F - Flangeless Bolt circle: 20 Holes 3/4-10 thread on 21.90" dia. C - Custom</p>	<p>S1 - 17" dia. spindle 12 x 1.125" - 12 UNF on 15" dia. bolt circle 12.75" dia. pilot S2 - 17" dia. spindle 12 x 1.22" Thru-hole on 15" dia. bolt circle 12.75" dia. pilot C1 - Custom Shaft</p>	<p>C - SAE "C" (2 & 4 Bolt) D - SAE "D" (4 Bolt) E - SAE "E" (4 Bolt) <i>See input mounting technical bulletin for details.</i></p>	<p>4 - 14T 12/24 DP 5 - 15T 8/16 DP 7 - 17T 12/24 DP 8 - 16T 8/16 DP 9 - 13T 8/16 DP <i>Verify motor shaft compatibility with factory</i></p>	<p>Simple Primary 26 - 26.48:1 41 - 41.41:1 Compound Primary 76 - 75.60:1 96 - 96.00:1 <i>Ratios up to 62,000:1 available</i></p>	<p>Z - Grease Zerk <i>Required for pinion-up applications.</i> R - Rotated Cover S - Stud 1.125 - 12 UNF <i>(Use with S2 spindle)</i></p>