



# 250L Series Spindle Drive

## 250,000 IN-LB TORQUE (28,250 N-m)

Data Sheet 250L1

Page 1 of 3

### Maximum Intermittent Output Torques

**250L** 250,000 in-lb (28,250 N-m)

Continuous torque of 1/3 to 1/2 of maximum intermittent ratings provides satisfactory planetary drive life in most applications. **Consult Eskridge Inc. for a detailed analysis of your application.**

For peak torque ratings, consult factory.

### Maximum Input Speed (No load)

**3000 RPM**

### Approximate Unit Weight

*lb. (kg)*

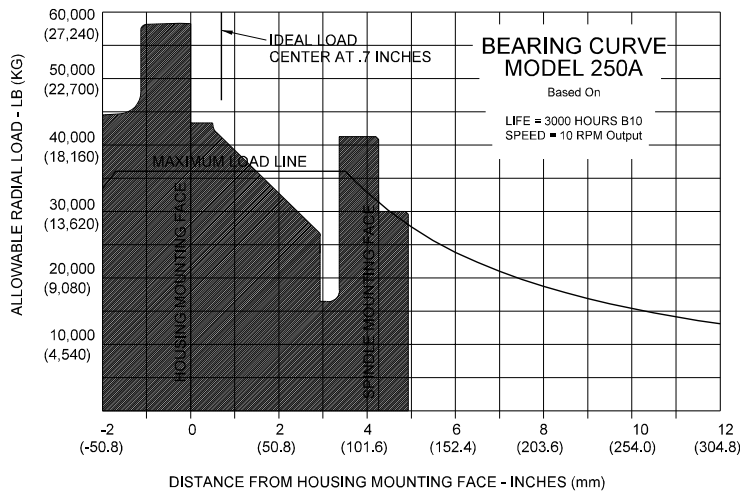
**360 - 415 lb**  
**(163 - 188 kg)**

### Oil Capacities\*

**VERT.** 10.0 PT(5L)

**HORIZ.** 6.0 PT(3L)

*\*Oil not included in units.*



To adjust for loads and speeds other than shown on curve.

$$\text{Adjusted Life (hrs)} = 3000 \left( \frac{10 \text{ RPM}}{\text{Speed (Adjusted)}} \right) \times \left( \frac{\text{Load (Curve)}}{\text{Load (Adjusted)}} \right)^{10/3}$$



For more information regarding Planetary Gear drives and other innovative products, feel free to contact us at:

1900 Kansas City Road • Olathe, Kansas 66061 • USA

PHONE: (913) 782-1238 • FAX: (913) 782-4206

WEBSITE: [www.eskridgeinc.com](http://www.eskridgeinc.com) • E-MAIL: [sales@eskridgeinc.com](mailto:sales@eskridgeinc.com)

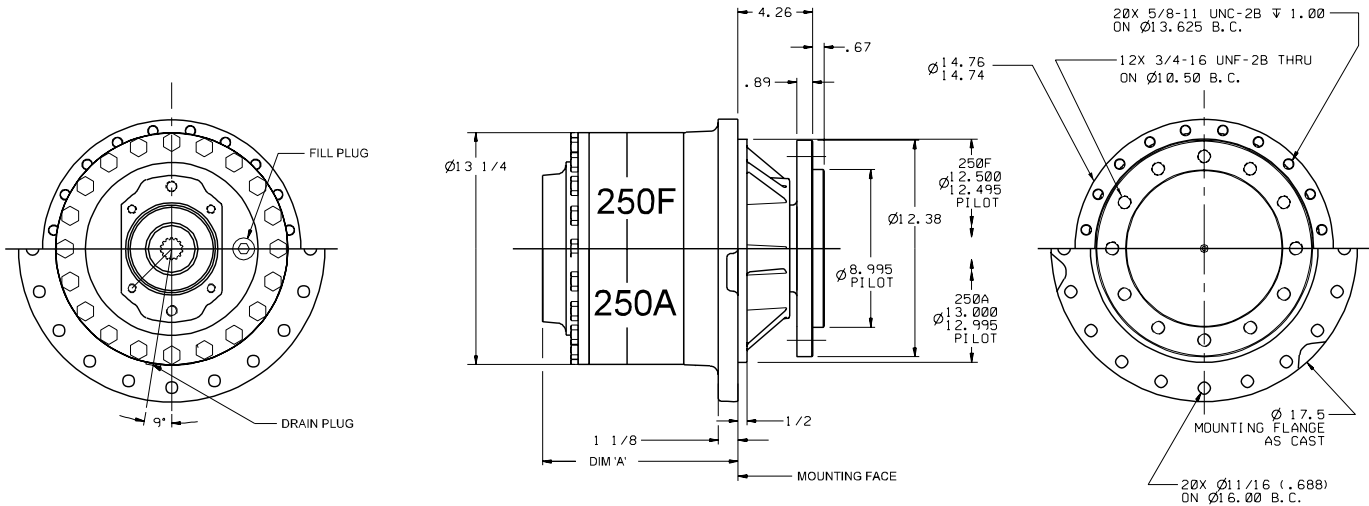


# 250L Series Spindle Drive

## 250,000 IN-LB TORQUE (28,250 N-m)

Data Sheet 250L1

Page 2 of 3



<i>Dimension 'A' Specifications</i>
<b>SAE A, B AND C MOUNTS</b> <b>11.17 (283.7)</b>
<b>SAE D MOUNTS</b> <b>11.75 (298.5)</b>



For more information regarding Planetary Gear drives and other innovative products, feel free to contact us at:

1900 Kansas City Road • Olathe, Kansas 66061 • USA

PHONE: (913) 782-1238 • FAX: (913) 782-4206

WEBSITE: [www.eskridgeinc.com](http://www.eskridgeinc.com) • E-MAIL: [sales@eskridgeinc.com](mailto:sales@eskridgeinc.com)



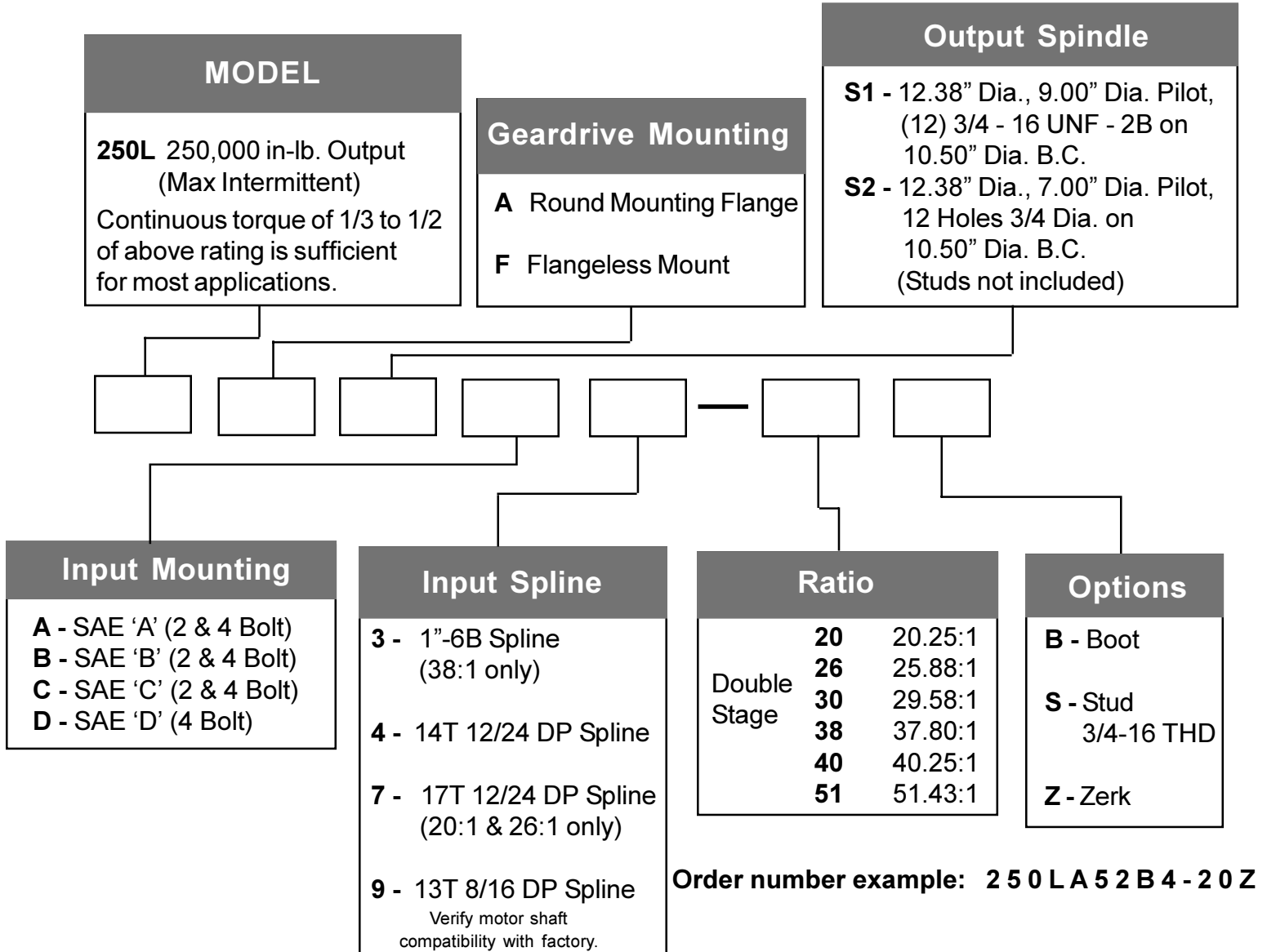
# 250L Series Spindle Drive

250,000 IN-LB TORQUE (28,250 N-m)

Data Sheet 250L1

Page 3 of 3

## Ordering Information



**Applications with output shaft up require the grease zerk option to ensure proper lubrication. To order optional grease fitting for pinion-up applications, add a 'Z' to the end of the part number.**

The patented Load-N-Lock® retention system incorporates the best features of a bearing clamp nut with the best features of a heavy-duty retaining ring. Like a clamp nut, the Load-N-Lock® can be adjusted to provide either end play or preload. Like a retaining ring, maintenance is simple and quick. The Load-N-Lock® provides a positive retention of the planetary geardrive tapered roller bearings and output shaft.



**ESKRIDGE**

For more information regarding Planetary Geardrives and other innovative products, feel free to contact us at:

1900 Kansas City Road • Olathe, Kansas 66061 • USA

PHONE: (913) 782-1238 • FAX: (913) 782-4206

WEBSITE: [www.eskridgeinc.com](http://www.eskridgeinc.com) • E-MAIL: [sales@eskridgeinc.com](mailto:sales@eskridgeinc.com)