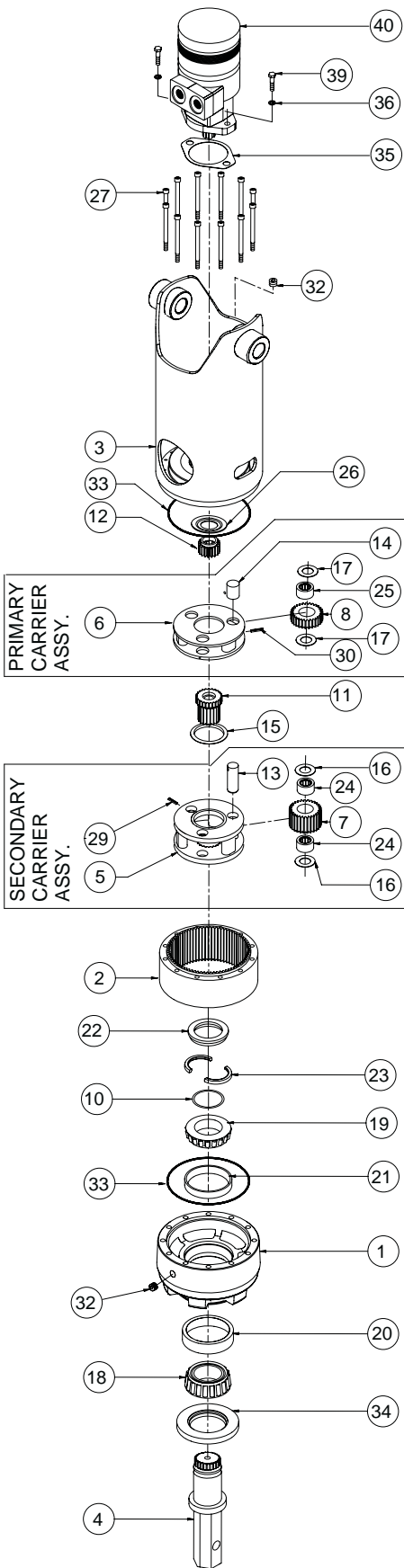


# Double Stage Exploded View Drawing



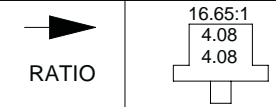
# ESKRIDGE

# MODEL D50

WITH INTEGRAL BAIL

EFFECTIVE  
FROM: S/N 58670 09-01-03  
TO: (CURRENT)

DOUBLE PLANETARY



DESCRIPTION			ITEM	QTY.	PART NUMBER
BASE			1	1	50-004-3303
RING GEAR			2	1	50-004-1023
COVER / BAIL ASSY 1" BAIL BOSSES			3	1	50-005-2142
COVER / BAIL ASSY 1-1/4" BAIL BOSSES					50-005-2132
OUTPUT SHAFT - HEX 2"			4	1	50-004-4082L
CARRIER-SECONDARY			5	1	50-004-1062
CARRIER-PRIMARY			6	1	50-004-1082
PLANET GEAR-SEC.			7	3	85-004-1051
PLANET GEAR-PRI.			8	3	85-004-1031
SHIM(S)			10	*	50-004-1521
SUN GEAR-SECONDARY			11	1	85-004-1412
INPUT GEAR (CODE 3 SAE 1"-6B)			12	1	85-004-1122
PLANET SHAFT-SECONDARY			13	3	71-004-0121
PLANET SHAFT-PRIMARY			14	3	81-004-0071
THRUST WASHER-SEC CUP			15	1	50-004-1011
THRUST WASHER-SEC.PLANET (GEAR)			16	6	85-004-1181
THRUST WASHER-PRI.PLANET (GEAR)			17	6	81-004-1561
BEARING CONE (OUTER)			18	1	01-102-0140
BEARING CONE (INNER)			19	1	01-102-0150
BEARING CUP (OUTER)			20	1	01-103-0130
BEARING CUP (INNER)			21	1	01-103-0140
LOCK RING			22	1	50-004-1462
SPLIT RING			23	1	50-004-1452
BEARING-SEC.PLANET			24	6	01-105-0010
BEARING-PRI.PLANET			25	3	01-105-0410
THRUST WASHER-INPUT			26	1	50-004-1091
SOCKET HEAD CAPSCREW 7/16-20 X 4.5 GR8			27	12	01-150-1820
ROLLPIN-SECONDARY 3/16 X 7/8			29	3	01-153-0210
ROLLPIN-PRIMARY 1/8 X 1			30	3	01-153-0080
PIPE PLUG-MAGNETIC 3/8 NPT-SOC HD			32	2	01-207-0070
O-RING 167 MM X 3 MM			33	2	01-402-0560
			34	1	01-405-0530
GASKET			35	1	90-004-1081
LOCK WASHER 1/2			36	2	01-166-0030
HHCS 1/2-13 X 1-1/2 GR5			39	2	01-150-0090
HYD. MOTOR (UNIT 5016-21F54 ONLY)			40	1	01-304-0540

NOTES: \* BEARING PRELOAD DETERMINES QUANTITY OF SHIMS.

SEAL KIT (P/N 85-016-0601) INCLUDES (2 EA.) O-RINGS AND (1 EA.) SEAL.

XD50LD2-AA / DATE: 03-04-2008