

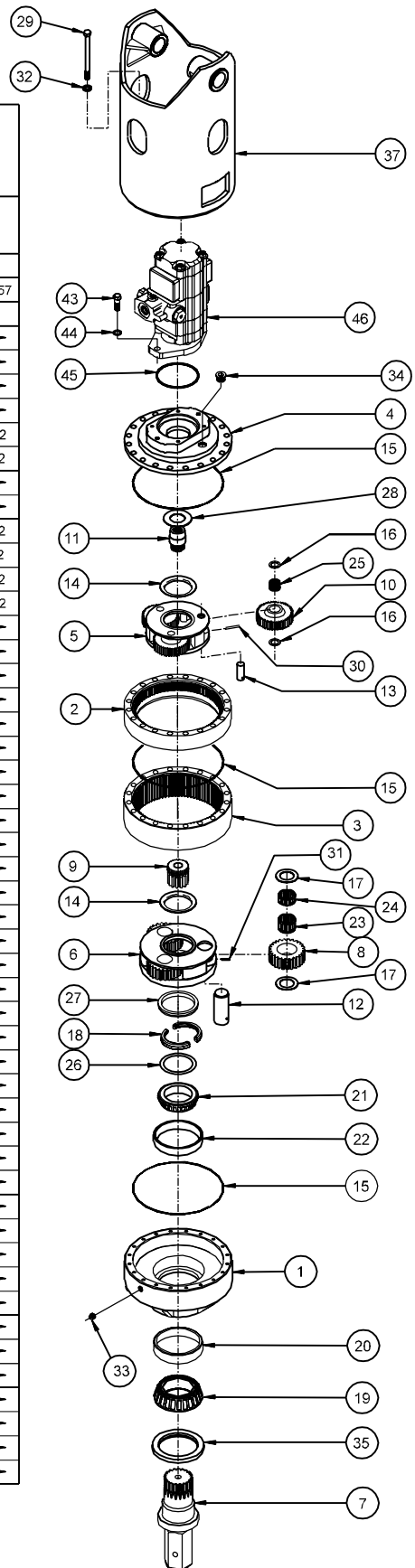


MODEL 75L SERIES HYDRASYNC AUGER DRIVE

EFFECTIVE FOR:
FROM: S/N 23280 02-17-98
TO: (CURRENT)

EQUIPPED WITH PATENTED "LOAD-N-LOCK"®
SHAFT RETENTION SYSTEM. (U.S. PATENT NO. 5746517).

		RATIO PRI.:1/SEC.:1				
		51.43:1	40.25:1	37.80:1	29.58:1	
ITEM	QTY	DESCRIPTION	PART NO.	PART NO.	PART NO.	PART NO.
1	1	BEARING CARRIER 75	75-004-3012			
2	1	RING GEAR-PRIMARY	25-004-1012			
3	1	RING GEAR-SECONDARY	25-004-1022			
4	1	COVER	25-004-1222			
5	1	CARRIER-PRIMARY	25-004-1032	25-004-1032	25-004-1042	25-004-1042
6	1	CARRIER-SECONDARY	25-004-1062	25-004-1072	25-004-1062	25-004-1072
7	1	OUTPUT SHAFT 2 5/8 HEX (75/250)	75-004-4022L			
		OUTPUT SHAFT 3" HEX (75/250)	75-004-4012L			
8	3	PLANET GEAR-SECONDARY	25-004-1082	25-004-1092	25-004-1082	25-004-1092
9	1	SUN GEAR-SECONDARY	25-004-1142	25-004-1152	25-004-1142	25-004-1152
10	3	PLANET GEAR-PRIMARY	25-004-1102	25-004-1102	25-004-1112	25-004-1112
11	1	INPUT GEAR 14 T 12/24 SPLINE	25-004-1162	25-004-1162	25-004-1172	25-004-1172
12	3	PLANET SHAFT-SECONDARY	25-004-1021			
13	3	PLANET SHAFT-PRIMARY	25-004-1031			
14	2	THRUST WASHER-SECONDARY (CAR.)	25-004-1132			
15	3	O-RINGS- 276	01-402-0020			
16	6	WASHER-PRIMARY PLANET	81-004-1561			
17	6	WASHER-SECONDARY PLANET	25-004-1041			
18	1	SPLIT RING- (2 HALVES)	25-004-1182			
19	1	BEARING CONE-	01-102-0120			
20	1	BEARING CUP-	01-103-0110			
21	1	BEARING CONE-	01-102-0250			
22	1	BEARING CUP-	01-103-0250			
23	3	BEARING-SEC.	01-105-0550			
24	3	BEARING-SEC.	01-105-0560			
25	3	BEARING-PRI.	01-105-0570			
26	*	SHIM (0.005") steel	25-004-1051			
27	1	LOCK RING	25-004-1192			
28	1	THRUST WASHER	81-004-2883			
29	20	HHCS-(1/2-13x7.5) GR8	01-150-1660			
30	3	SPRING PIN-(3/16x1)	01-153-0020			
31	3	SPRING PIN-(3/16x1 1/4)	01-153-0190			
32	20	FLAT WASHER-(1/2 X 7/8 X 1/8)	01-166-0120			
33	1	PIPE PLUG-(1/2 NPT MAGNETIC)	01-207-0041			
34	1	PLUG-(PARKER# 05HP-12)	01-208-0030			
35	1	SEAL	01-405-0050			
BAILS	37	1	2" BOSS C.S. M76 MOTOR , BACKHOE	75-005-2132		
			2" BOSS- BACKHOE, M50 1.25 X 2.5 - 2.5 X 2.5 MTRS	75-005-2092		
			1.5" BOSS, M50 1.25 X 2.5 THRU 2.5 X 2.5 MTRS.	75-005-2082		
			2" BOSS, M50 1.25 X 2.5 THRU 2.5 X 2.5 MTRS	75-005-2042		
			2" BOSS, C.S. M76 MOTOR	75-005-2012		
43	2	H.H.C.S. (5/8-11 X 1-3/4)	01-150-0110			
44	2	LOCKWASHER (5/8)	01-166-0040			
45	1	O-RING (PARKER NO, 250)	01-402-0010			
MOTORS	46	1	MOTOR - C.S. M50 1.5 X 2.5 (HI)	01-304-0250		
			MOTOR - C.S. M76A 998 BEVL30-7	01-304-0340		
			MOTOR - C.S. M50 2.5 X 2.5 (HI)	01-304-0450		
			MOTOR - C.S. VM51B 2.5 X 2.5 (HI)	01-304-0530		



* QUANTITY OF SHIMS DETERMINED BY BEARING PRELOAD.

OPTIONS
SEAL KIT P/N 25-016-2021
INCLUDES 1 EA. OF ITEM 35 AND ITEM 45.
PLUS A QTY 3 OF ITEM 15