



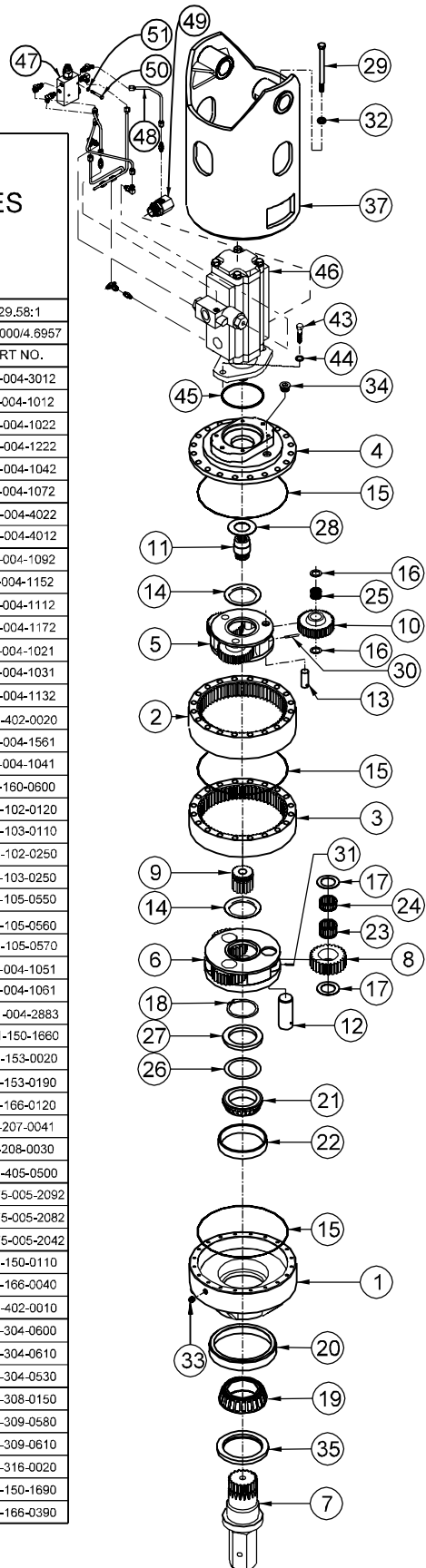
## KICKDOWN MODELS S75 SERIES (HYDRASYNC) AUGER DRIVE

EFFECTIVE:  
FROM: S/N 27060 02-16-00  
TO: CURRENT

RATIO PRL:1/SEC.:1

51.43:1	40.25:1	37.80:1	29.58:1
---------	---------	---------	---------

ITEM	QTY	DESCRIPTION	PART NO.	PART NO.	PART NO.	PART NO.	
1	1	BEARING CARRIER 75	75-004-3012	75-004-3012	75-004-3012	75-004-3012	
2	1	RING GEAR-PRIMARY	25-004-1012	25-004-1012	25-004-1012	25-004-1012	
3	1	RING GEAR-SECONDARY	25-004-1022	25-004-1022	25-004-1022	25-004-1022	
4	1	COVER	25-004-1222	25-004-1222	25-004-1222	25-004-1222	
5	1	CARRIER-PRIMARY	25-004-1032	25-004-1032	25-004-1042	25-004-1042	
6	1	CARRIER-SECONDARY	25-004-1062	25-004-1072	25-004-1062	25-004-1072	
7	1	OUTPUT SHAFT 2 5/8 HEX (75/250)	75-004-4022	75-004-4022	75-004-4022	75-004-4022	
		OUTPUT SHAFT 3" HEX (75/250)	75-004-4012	75-004-4012	75-004-4012	75-004-4012	
8	3	PLANET GEAR-SECONDARY	25-004-1082	25-004-1092	25-004-1082	25-004-1092	
9	1	SUN GEAR-SECONDARY	25-004-1142	25-004-1152	25-004-1142	25-004-1152	
10	3	PLANET GEAR-PRIMARY	25-004-1102	25-004-1102	25-004-1112	25-004-1112	
11	1	INPUT GEAR 14 T 12/24 SPLINE	25-004-1162	25-004-1162	25-004-1172	25-004-1172	
12	3	PLANET SHAFT-SECONDARY	25-004-1021	25-004-1021	25-004-1021	25-004-1021	
13	3	PLANET SHAFT-PRIMARY	25-004-1031	25-004-1031	25-004-1031	25-004-1031	
14	2	THRUST WASHER-SECONDARY (CAR.)	25-004-1132	25-004-1132	25-004-1132	25-004-1132	
15	3	O-RINGS- 276	01-402-0020	01-402-0020	01-402-0020	01-402-0020	
16	6	WASHER-PRIMARY PLANET	81-004-1561	81-004-1561	81-004-1561	81-004-1561	
17	6	WASHER-SECONDARY PLANET	25-004-1041	25-004-1041	25-004-1041	25-004-1041	
18	1	RETAINING RING-	01-160-0600	01-160-0600	01-160-0600	01-160-0600	
19	1	BEARING CONE-	01-102-0120	01-102-0120	01-102-0120	01-102-0120	
20	1	BEARING CUP-	01-103-0110	01-103-0110	01-103-0110	01-103-0110	
21	1	BEARING CONE-	01-102-0250	01-102-0250	01-102-0250	01-102-0250	
22	1	BEARING CUP-	01-103-0250	01-103-0250	01-103-0250	01-103-0250	
23	3	BEARING-SEC.	01-105-0550	01-105-0550	01-105-0550	01-105-0550	
24	3	BEARING-SEC.	01-105-0560	01-105-0560	01-105-0560	01-105-0560	
25	3	BEARING-PRL.	01-105-0570	01-105-0570	01-105-0570	01-105-0570	
26	★	SHIM (0.005") steel	25-004-1051	25-004-1051	25-004-1051	25-004-1051	
27	1	SUPPORT RING	25-004-1061	25-004-1061	25-004-1061	25-004-1061	
28	1	THRUST WASHER	81-004-2883	81-004-2883	81-004-2883	81-004-2883	
29	20	HHCS-(1/2-13x7.5) GR8	01-150-1660	01-150-1660	01-150-1660	01-150-1660	
30	3	SPRING PIN-(3/16x1)	01-153-0020	01-153-0020	01-153-0020	01-153-0020	
31	3	SPRING PIN-(3/16x1 1/4)	01-153-0190	01-153-0190	01-153-0190	01-153-0190	
32	20	FLAT WASHER-(1/2 X 7/8 X 1/8)	01-166-0120	01-166-0120	01-166-0120	01-166-0120	
33	1	PIPE PLUG-(1/2 NPT MAGNETIC)	01-207-0041	01-207-0041	01-207-0041	01-207-0041	
34	1	PLUG-(PARKER# 05HP-12)	01-208-0030	01-208-0030	01-208-0030	01-208-0030	
35	1	SEAL	01-405-0500	01-405-0500	01-405-0500	01-405-0500	
BAILS	37	1	2"BOSS- BACKHOE, M50 1.25 X 2.5 - 2.5 X 2.5 MTRS	S75-005-2092K	S75-005-2092	S75-005-2092	S75-005-2092
			1.5" BOSS, M50 1.25 X 2.5 THRU 2.5 X 2.5 MTRS.	S75-005-2082K	S75-005-2082	S75-005-2082	S75-005-2082
			2"BOSS, M50 1.25 X 2.5 THRU 2.5 X 2.5 MTRS	S75-005-2042K	S75-005-2042	S75-005-2042	S75-005-2042
	43	2	H.H.C.S. (5/8-11 X 1-3/4)	01-150-0110	01-150-0110	01-150-0110	01-150-0110
	44	2	LOCKWASHER (5/8)	01-166-0040	01-166-0040	01-166-0040	01-166-0040
	45	1	O-RING (PARKER NO. 250)	01-402-0010	01-402-0010	01-402-0010	01-402-0010
MTRS	46	1	C.S.M50B1.5X2.5-HI(SPL SEAL)	01-304-0600	01-304-0600	01-304-0600	01-304-0600
			C.S.M51B 2.5X2.5(HI PRESS SEAL	01-304-0610	01-304-0610	01-304-0610	01-304-0610
			C.S.WM51B 2.5X2.5 (HI)	01-304-0530	01-304-0530	01-304-0530	01-304-0530
	47	1	VALVE BODY 2-DIRECTION	01-308-0150	01-308-0150	01-308-0150	01-308-0150
	48	1	KIT-TUBE AS&FIT'G KICKDOWN-58	01-309-0580	01-309-0580	01-309-0580	01-309-0580
			KIT-TUBE AS&FIT'G KICKDOWN 61	01-309-0610	01-309-0610	01-309-0610	01-309-0610
	49	1	FITTING -16-16 TO -4 KICKDOWN	01-316-0020	01-316-0020	01-316-0020	01-316-0020
50	2	HHCS 1/4-20 X 1.75 GR 5	01-150-1690	01-150-1690	01-150-1690	01-150-1690	
51	2	FLATWASHER (1/4)	01-166-0390	01-166-0390	01-166-0390	01-166-0390	



★ QUANTITY OF SHIMS DETERMINED BY BEARING PRELOAD.

OPTIONS  
SEAL KIT P/N 25-016-2021  
INCLUDES 1 EA. OF ITEM 35 AND ITEM 45.  
PLUS A QTY 3 OF ITEM 15