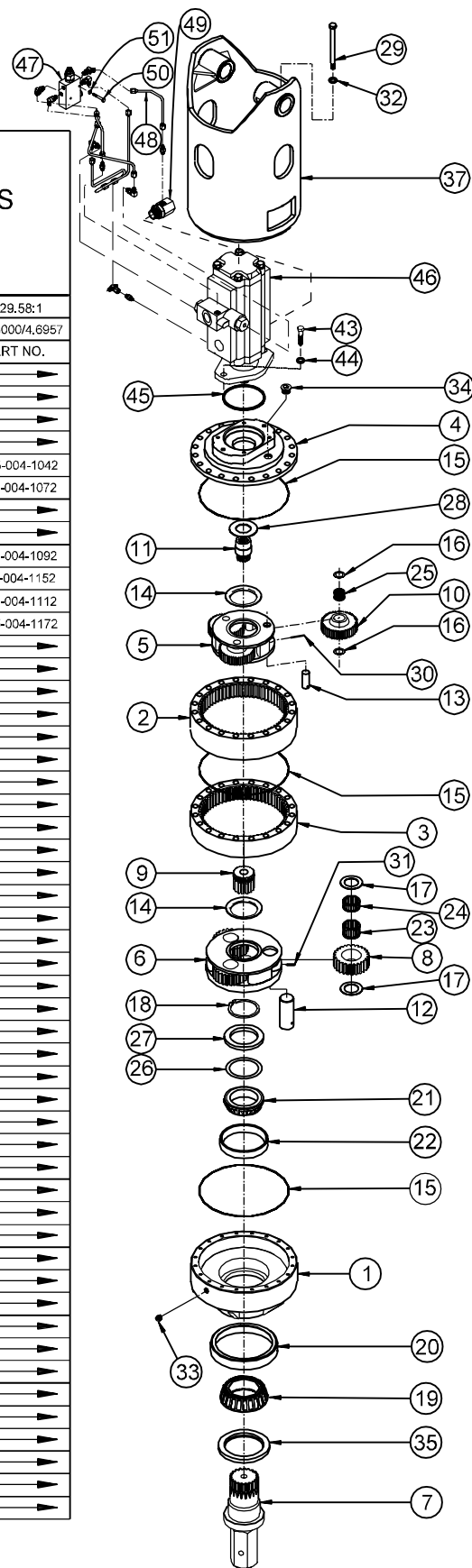




## KICKDOWN MODELS 75 SERIES (HYDRASYNC) AUGER DRIVE

EFFECTIVE:  
FROM: S/N 27060 02-16-00  
TO: CURRENT

			51.43:1	40.25:1	37.80:1	29.58:1	
		RATIO PRI.:1/SEC.:1	8.5714/6.00	8.5714/4.6957	6.3000/6.00	6.3000/4.6957	
ITEM	QTY	DESCRIPTION	PART NO.	PART NO.	PART NO.	PART NO.	
1	1	BEARING CARRIER 75	75-004-3012				
2	1	RING GEAR-PRIMARY	25-004-1012				
3	1	RING GEAR-SECONDARY	25-004-1022				
4	1	COVER	25-004-1222				
5	1	CARRIER-PRIMARY	25-004-1032	25-004-1032	25-004-1042	25-004-1042	
6	1	CARRIER-SECONDARY	25-004-1062	25-004-1072	25-004-1062	25-004-1072	
7	1	OUTPUT SHAFT 2 5/8 HEX (75/250)	75-004-4022				
		OUTPUT SHAFT 3" HEX (75/250)	75-004-4012				
8	3	PLANET GEAR-SECONDARY	25-004-1082	25-004-1092	25-004-1082	25-004-1092	
9	1	SUN GEAR-SECONDARY	25-004-1142	25-004-1152	25-004-1142	25-004-1152	
10	3	PLANET GEAR-PRIMARY	25-004-1102	25-004-1102	25-004-1112	25-004-1112	
11	1	INPUT SHAFT 14 T 12/24 SPLINE	25-004-1162	25-004-1162	25-004-1172	25-004-1172	
12	3	PLANET SHAFT-SECONDARY	25-004-1021				
13	3	PLANET SHAFT-PRIMARY	25-004-1031				
14	2	THRUST WASHER-SECONDARY (CAR.)	25-004-1132				
15	3	O-RINGS- 276	01-402-0020				
16	6	WASHER-PRIMARY PLANET	81-004-1561				
17	6	WASHER-SECONDARY PLANET	25-004-1041				
18	1	RETAINING RING-	01-160-0600				
19	1	BEARING CONE-	01-102-0120				
20	1	BEARING CUP-	01-103-0110				
21	1	BEARING CONE-	01-102-0250				
22	1	BEARING CUP-	01-103-0250				
23	3	BEARING-SEC.	01-105-0550				
24	3	BEARING-SEC.	01-105-0560				
25	3	BEARING-PRI.	01-105-0570				
26	★	SHIM (0.005") steel	25-004-1051				
27	1	SUPPORT RING	25-004-1061				
28	1	THRUST WASHER	81-004-2883				
29	20	HHCS-(1/2-13x7.5) GR8	01-150-1660				
30	3	SPRING PIN-(3/16x1)	01-153-0020				
31	3	SPRING PIN-(3/16x1 1/4)	01-153-0190				
32	20	FLAT WASHER-(1/2 X 7/8 X 1/8)	01-166-0120				
33	1	PIPE PLUG-(1/2 NPT MAGNETIC)	01-207-0041				
34	1	PLUG-(PARKER# 05HP-12)	01-208-0030				
35	1	SEAL	01-405-0500				
BAILS	37	2" BOSS- BACKHOE, M50 1.25 X 2.5 - 2.5 X 2.5 MTRS	75-005-2092K				
		1.5" BOSS, M50 1.25 X 2.5 THRU 2.5 X 2.5 MTRS.	75-005-2082K				
		2" BOSS, M50 1.25 X 2.5 THRU 2.5 X 2.5 MTRS	75-005-2042K				
43	2	H.H.C.S. (5/8-11 X 1-3/4)	01-150-0110				
44	2	LOCKWASHER (5/8)	01-166-004C				
45	1	O-RING (PARKER NO. 250)	01-402-0010				
MTRS	46	MOTOR - C.S. M50 1.5 X 2.5 (HI)	01-304-0600				
		MOTOR - C.S. M51 2.5 X 2.5 (HI) (SPL SEAL)	01-304-0610				
		MOTOR - C.S. M50 2.0 X 2.5 (HI) (SPL SEAL)	01-304-0620				
	47	VALVE BODY 2-DIRECTION	01-308-0150				
	48		KIT-TUBE AS&FIT'G KICKDOWN-58	01-309-0580			
			KIT-TUBE AS&FIT'G KICKDOWN 61	01-309-0610			
	49	FITTING -16-16 TO -4 KICKDOWN	01-316-0020				
	50	2	HHCS 1/4-20 X 1.75 GR 5	01-150-1690			
	51	2	FLATWASHER (1/4)	01-166-0390			



\* QUANTITY OF SHIMS DETERMINED BY BEARING PRELOAD.

**OPTIONS**

SEAL KIT P/N 25-016-2021  
INCLUDES 1 EA. OF ITEM 35 AND ITEM 45.  
PLUS A QTY 3 OF ITEM 15