

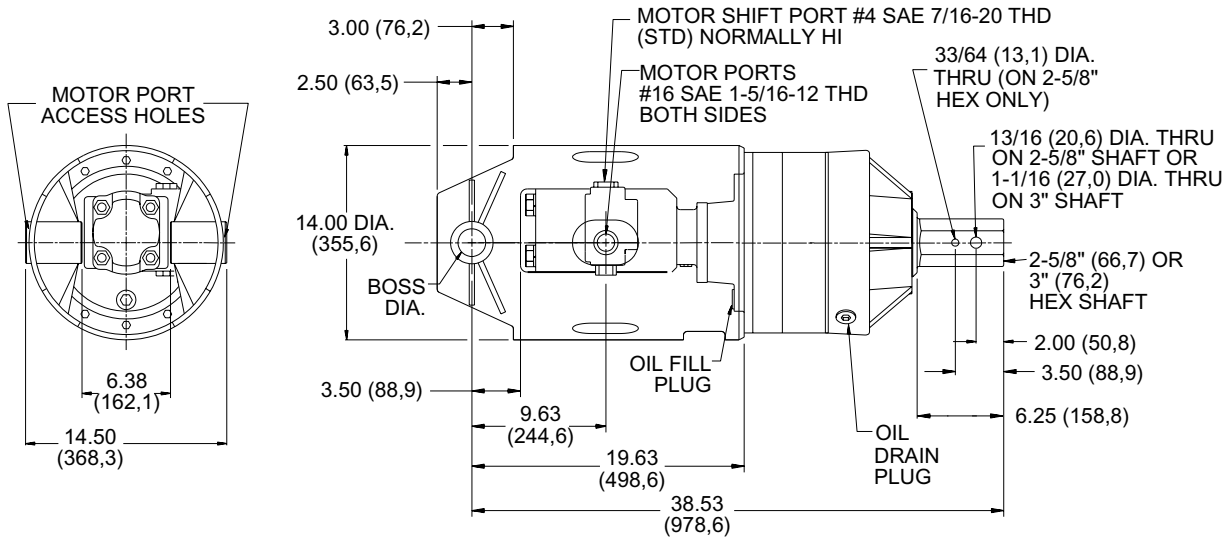


# 75 Series DiggerDrive™

4,300 TO 20,000 FT-LB TORQUE (Two Speed)  
Data Sheet 7075

The series 75 "Hydrasync" uses a high efficiency double planetary for high torque requirements, like foundation anchor installation and drilling larger holes for piers. The 75 can provide a cost saving alternative to other single purpose equipment.

- Now available with automatic "Kickdown" (when operations require it) shifts to low speed high torque position while you keep on digging.



TWO SPEED SHIFT-ON-THE-FLY OR OPTIONAL SINGLE SPEED  
 HEAVY DUTY, HIGH EFFICIENCY, DOUBLE PLANETARY DRIVE  
**SHAFT SIDE LOADING NOT RECOMMENDED**

## TECHNICAL SPECIFICATIONS

**MOTOR MOUNT:** SAE "C" 2-BOLT AND 4-BOLT  
**MOTORS:** 1 & 2-SPEED GEAR TYPE  
**RATED OUTPUT TORQUES:** TO 20,000 ft-lb (27,112 N-m)  
**MAXIMUM SYSTEM PRESSURE:** TO 2,750 psi (189,7 bar)  
**SHIFTING PRESSURE:** 300 psi (20,7 bar) MINIMUM, 2750 psi (189,7 bar) MAXIMUM  
**MOTOR CASE DRAIN:** REQUIRED  
**OUTPUT SHAFT:** 2-5/8" (66,7 mm) OR 3" (76,2 mm) HEX  
**SHAFT PULL-OUT LOAD:** 30,000 lb (13,636 kg)  
**SHAFT PRESSURE LOAD:** 30,000 lb (13,638 kg)  
**OIL CAPACITY:** 10 pt (4,76 l)  
**BAIL BOSS DIAMETER:** 1.51" (38,35 mm) OR 2.01" (51,05 mm)  
**WEIGHT:** 510 lb (231,8 kg)

\* **Maximum intermittent value.**

For more information regarding Planetary Diggerdrives and other innovative products, feel free to contact us at:



**ESKRIDGE**

1900 Kansas City Road • Olathe, Kansas 66061 • USA

PHONE: (913) 782-1238 • FAX: (913) 782-4206

WEBSITE: [www.eskridgeinc.com](http://www.eskridgeinc.com) • E-MAIL: [sales@eskridgeinc.com](mailto:sales@eskridgeinc.com)

# Performance Data

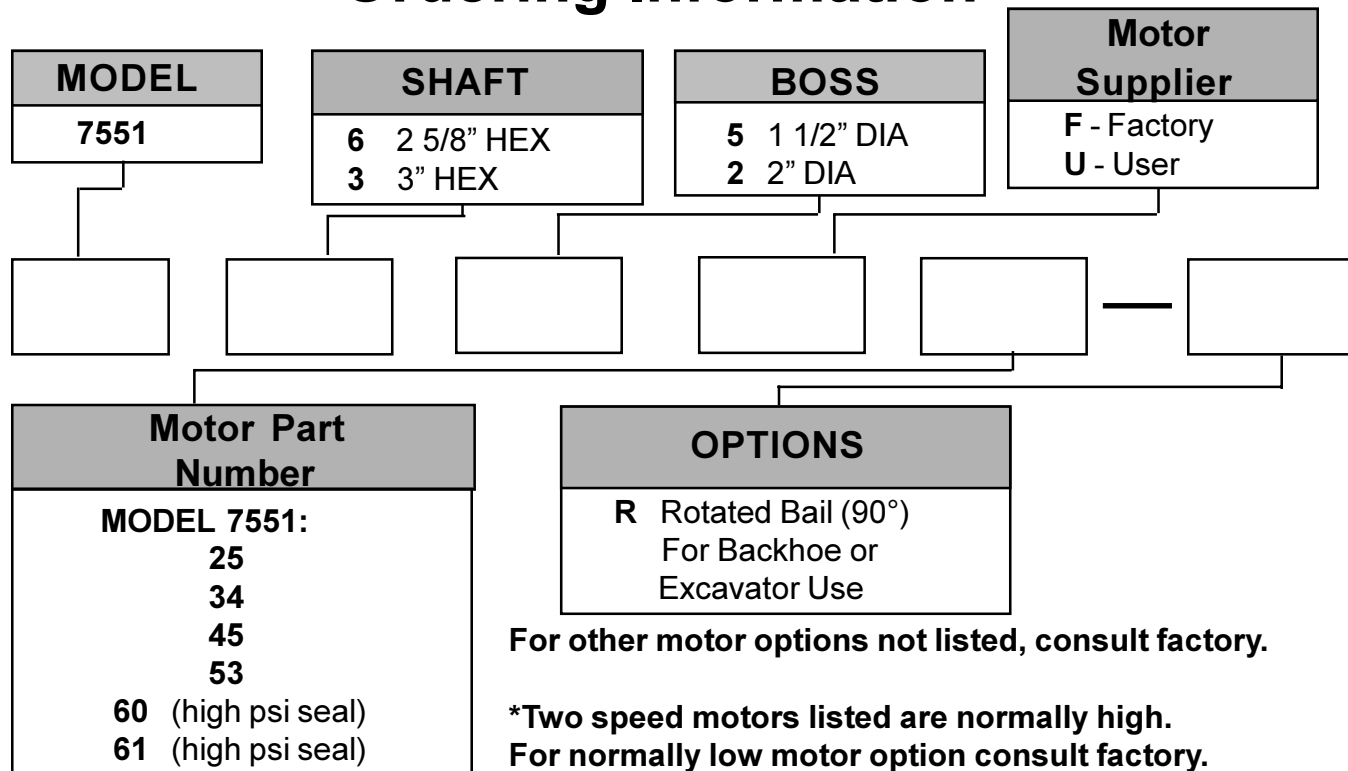
MODEL	GEAR RATIO	MOTOR		FLOW gpm (1/ min)	RATED TORQUE/SPEED	
		ORDER OPTION NUMBER	MOTOR PRESSURE $\Delta$ psi ( $\Delta$ bar)		HIGH SPEED	LOW SPEED
75-51	51:1	25/60	2,400	40 (152)	4,300 ft/lb-42rpm	13,800 ft/lb-16rpm
		34	2,400 (166)	40 (152)	--	17,000 ft/lb-13rpm
		45/61	2,400 (166)	40 (152)	7,200 ft/lb-25rpm	17,300 ft/lb-13rpm
		53/61	2,750 (190)	40 (152)	8,200 ft/lb-25rpm	20,000 ft/lb-13rpm

**NOTES:**

*\* Maximum intermittent value.*

- STARTING TORQUES ARE APPROXIMATELY 25% LESS THAN RUNNING TORQUES.
- SYSTEM BACK PRESSURE WILL REDUCE THE RUNNING TORQUES PROPORTIONALLY.
- BACK PRESSURE SHOULD BE LIMITED TO 100 psi (6,9 bar).
- 3" (76,2 mm) HEX SHAFT REQUIRED ON UNITS DEVELOPING TORQUES ABOVE 15,000 ft-lb. (20334 N-m).
- HIGH ALLOY HEAT TREATED BAIL BOSS PINS REQUIRED (CUSTOMER PROVIDED).

## Ordering Information



### IMPORTANT INFORMATION...

**ESKRIDGE, INC. EXPRESSLY DISCLAIMS ANY IMPLIED WARRANTY OF MERCHANTABILITY OR FITNESS FOR ANY PARTICULAR PURPOSE FOR THE PRODUCTS SHOWN HEREIN.**

Any claims based on or related to the products shown herein will be satisfied only by repair or replacement in Eskridge, Inc.'s sole discretion to the extent covered by Eskridge's Product Warranty. Eskridge, Inc. is not liable for incidental or consequential damage of any kind or nature that relate in any way to the products shown herein. For complete warranty information, please refer to Eskridge, Inc.'s Product Warranty that applies to the products shown herein and is incorporated by this reference as if fully set forth. A copy of Eskridge, Inc.'s Product Warranty can be obtained by writing Eskridge, Inc. at P.O. Box 875, 1900 Kansas City Road, Olathe, Kansas 66061