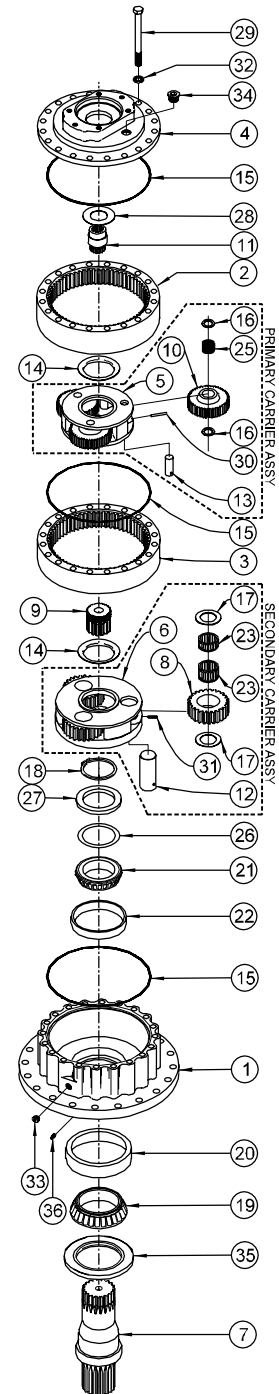


ITEM	QTY	DESCRIPTION	RATIO →								
			20.25:1 4.3125:1 4.6957:1	25.88:1 4.3125:1 6.00:1	29.58:1 6.30:1 4.6957:1	37.80:1 6.30:1 6.00:1	40.25:1 8.5714:1 4.6957:1	51.43:1 8.5714:1 6.00:1			
		EFFECTIVE: FROM: S/N 28500 01/01/97 TO: CURRENT									
1	1	250A BASE - ROUND	25-004-3012	25-004-3012	25-004-3012	25-004-3012	25-004-3012	25-004-3012	25-004-3012	25-004-3012	
		250F BASE - FLANGELESS	25-004-3022	25-004-3022	25-004-3022	25-004-3022	25-004-3022	25-004-3022	25-004-3022	25-004-3022	
		250Q BASE - ECCENTRIC PILOT CUSTOM BASE	25-004-3152	25-004-3152	25-004-3152	25-004-3152	25-004-3152	25-004-3152	25-004-3152	25-004-3152	
2	1	RING GEAR - PRIMARY	25-004-1012	25-004-1012	25-004-1012	25-004-1012	25-004-1012	25-004-1012	25-004-1012	25-004-1012	
3	1	RING GEAR - SECONDARY	25-004-1022	25-004-1022	25-004-1022	25-004-1022	25-004-1022	25-004-1022	25-004-1022	25-004-1022	
4	1	A - SAE 'A' COVER	25-005-2061	25-005-2061	25-005-2061	25-005-2061	25-005-2061	25-005-2061	25-005-2061	25-005-2061	
		B - SAE 'B' COVER	25-005-2051	25-005-2051	25-005-2051	25-005-2051	25-005-2051	25-005-2051	25-005-2051	25-005-2051	
		C - SAE 'C' (2 AND 4 BOLT)	25-004-1222	25-004-1222	25-004-1222	25-004-1222	25-004-1222	25-004-1222	25-004-1222	25-004-1222	
		D - SAE 'D' COVER	25-004-1232	25-004-1232	25-004-1232	25-004-1232	25-004-1232	25-004-1232	25-004-1232	25-004-1232	
5	1	CARRIER - PRIMARY	25-004-1052	25-004-1052	25-004-1042	25-004-1042	25-004-1032	25-004-1032	25-004-1032	25-004-1032	
6	1	CARRIER - SECONDARY	25-004-1072	25-004-1062	25-004-1072	25-004-1062	25-004-1072	25-004-1072	25-004-1062	25-004-1062	
7	1	D1 - OUTPUT SHAFT 20T 6/12 SPLINE	25-004-4012	25-004-4012	25-004-4012	25-004-4012	25-004-4012	25-004-4012	25-004-4012	25-004-4012	
		D2 - OUTPUT SHAFT 3.75" DIA, KEYED	25-004-4022	25-004-4022	25-004-4022	25-004-4022	25-004-4022	25-004-4022	25-004-4022	25-004-4022	25-004-4022
		C1 - OUTPUT SHAFT - CUSTOM									
8	3	PLANET GEAR - SECONDARY	25-004-1092	25-004-1082	25-004-1092	25-004-1082	25-004-1092	25-004-1082	25-004-1092	25-004-1082	
9	1	SUN GEAR - SECONDARY	25-004-1152	25-004-1142	25-004-1152	25-004-1142	25-004-1152	25-004-1142	25-004-1152	25-004-1142	
10	3	PLANET GEAR - PRIMARY	25-004-1122	25-004-1122	25-004-1112	25-004-1112	25-004-1112	25-004-1112	25-004-1102	25-004-1102	
11	1	INPUT GEAR INPUT 14T SPL	25-004-1202	25-004-1202	25-004-1172	25-004-1172	25-004-1162	25-004-1162	25-004-1162	25-004-1162	
		INPUT GEAR INPUT 13T SPL	25-004-1292	25-004-1292	25-004-1282	25-004-1282	25-004-1272	25-004-1272	25-004-1272	25-004-1272	
12	3	PLANET SHAFT - SECONDARY	25-004-1021	25-004-1021	25-004-1021	25-004-1021	25-004-1021	25-004-1021	25-004-1021	25-004-1021	
13	3	PLANET SHAFT - PRIMARY	25-004-1031	25-004-1031	25-004-1031	25-004-1031	25-004-1031	25-004-1031	25-004-1031	25-004-1031	
14	2	THRUST WASHER - CARRIER	25-004-1132	25-004-1132	25-004-1132	25-004-1132	25-004-1132	25-004-1132	25-004-1132	25-004-1132	
15	3	SEAL (O-RING)	01-402-0020	01-402-0020	01-402-0020	01-402-0020	01-402-0020	01-402-0020	01-402-0020	01-402-0020	
16	6	THRUST WASHER - PRI. PLANET	81-004-1561	81-004-1561	81-004-1561	81-004-1561	81-004-1561	81-004-1561	81-004-1561	81-004-1561	
17	6	THRUST WASHER - SEC. PLANET	25-004-1041	25-004-1041	25-004-1041	25-004-1041	25-004-1041	25-004-1041	25-004-1041	25-004-1041	
18	1	RETAINING RING	01-160-0600	01-160-0600	01-160-0600	01-160-0600	01-160-0600	01-160-0600	01-160-0600	01-160-0600	
19	1	BEARING CONE - OUTER	01-102-0240	01-102-0240	01-102-0240	01-102-0240	01-102-0240	01-102-0240	01-102-0240	01-102-0240	
20	1	BEARING CUP - OUTER	01-103-0240	01-103-0240	01-103-0240	01-103-0240	01-103-0240	01-103-0240	01-103-0240	01-103-0240	
21	1	BEARING CONE - INNER	01-102-0250	01-102-0250	01-102-0250	01-102-0250	01-102-0250	01-102-0250	01-102-0250	01-102-0250	
22	1	BEARING CUP - INNER	01-103-0250	01-103-0250	01-103-0250	01-103-0250	01-103-0250	01-103-0250	01-103-0250	01-103-0250	
23	3	BEARING - SEC PLANET GEAR	01-105-0550	01-105-0550	01-105-0550	01-105-0550	01-105-0550	01-105-0550	01-105-0550	01-105-0550	
24	3	BEARING - SEC PLANET GEAR	01-105-0560	01-105-0560	01-105-0560	01-105-0560	01-105-0560	01-105-0560	01-105-0560	01-105-0560	
25	3	BEARING - PRI PLANET GEAR	01-105-0570	01-105-0570	01-105-0570	01-105-0570	01-105-0570	01-105-0570	01-105-0570	01-105-0570	
26	*	SHIM - SHAFT ADJUSTMENT	25-004-1051	25-004-1051	25-004-1051	25-004-1051	25-004-1051	25-004-1051	25-004-1051	25-004-1051	
27	1	SPACER	25-004-1061	25-004-1061	25-004-1061	25-004-1061	25-004-1061	25-004-1061	25-004-1061	25-004-1061	
28	1	THRUST WASHER - INPUT GEAR	81-004-2883	81-004-2883	81-004-2883	81-004-2883	81-004-2883	81-004-2883	81-004-2883	81-004-2883	
		THRUST WASHER - F/U/W/ 13T 8/16 INPUT	01-112-0030	01-112-0030	01-112-0030	01-112-0030	01-112-0030	01-112-0030	01-112-0030	01-112-0030	
29	20	HEX HEAD CAPSCREW (5/8-11 X 7) GR 8	01-150-1630	01-150-1630	01-150-1630	01-150-1630	01-150-1630	01-150-1630	01-150-1630	01-150-1630	
30	3	ROLL PIN (3/16 X 1)	01-153-0020	01-153-0020	01-153-0020	01-153-0020	01-153-0020	01-153-0020	01-153-0020	01-153-0020	
31	3	ROLL PIN (3/16 X 1 1/4)	01-153-0190	01-153-0190	01-153-0190	01-153-0190	01-153-0190	01-153-0190	01-153-0190	01-153-0190	
32	20	LOCKWASHER - (5/8)	01-166-0040	01-166-0040	01-166-0040	01-166-0040	01-166-0040	01-166-0040	01-166-0040	01-166-0040	
33	1	PIPE PLUG (1/2 NPT MAGNETIC) - BASE	01-207-0041	01-207-0041	01-207-0041	01-207-0041	01-207-0041	01-207-0041	01-207-0041	01-207-0041	
34	1	PLUG - COVER	01-208-0030	01-208-0030	01-208-0030	01-208-0030	01-208-0030	01-208-0030	01-208-0030	01-208-0030	
35	1	SHAFT SEAL	01-405-0670	01-405-0670	01-405-0670	01-405-0670	01-405-0670	01-405-0670	01-405-0670	01-405-0670	
36	1	PLUG 1/4 NPT	01-207-0020	01-207-0020	01-207-0020	01-207-0020	01-207-0020	01-207-0020	01-207-0020	01-207-0020	
		GREASE FITTING (OPTIONAL-SHOWN)	01-215-0040	01-215-0040	01-215-0040	01-215-0040	01-215-0040	01-215-0040	01-215-0040	01-215-0040	



▷ FOR 13T, 8/16 INPUT SPLINE, USE P/N 01-112-0030 THRUST WASHER. (USE ONLY WITH 'D' COVER).

* QUANTITY OF SHIMS DETERMINED BY BEARING PRELOAD.

OPTIONS SEAL KIT P/N 25-016-2011
INCLUDES 1 EA. OF ITEMS 35
AND A QTY 3 OF ITEM 15